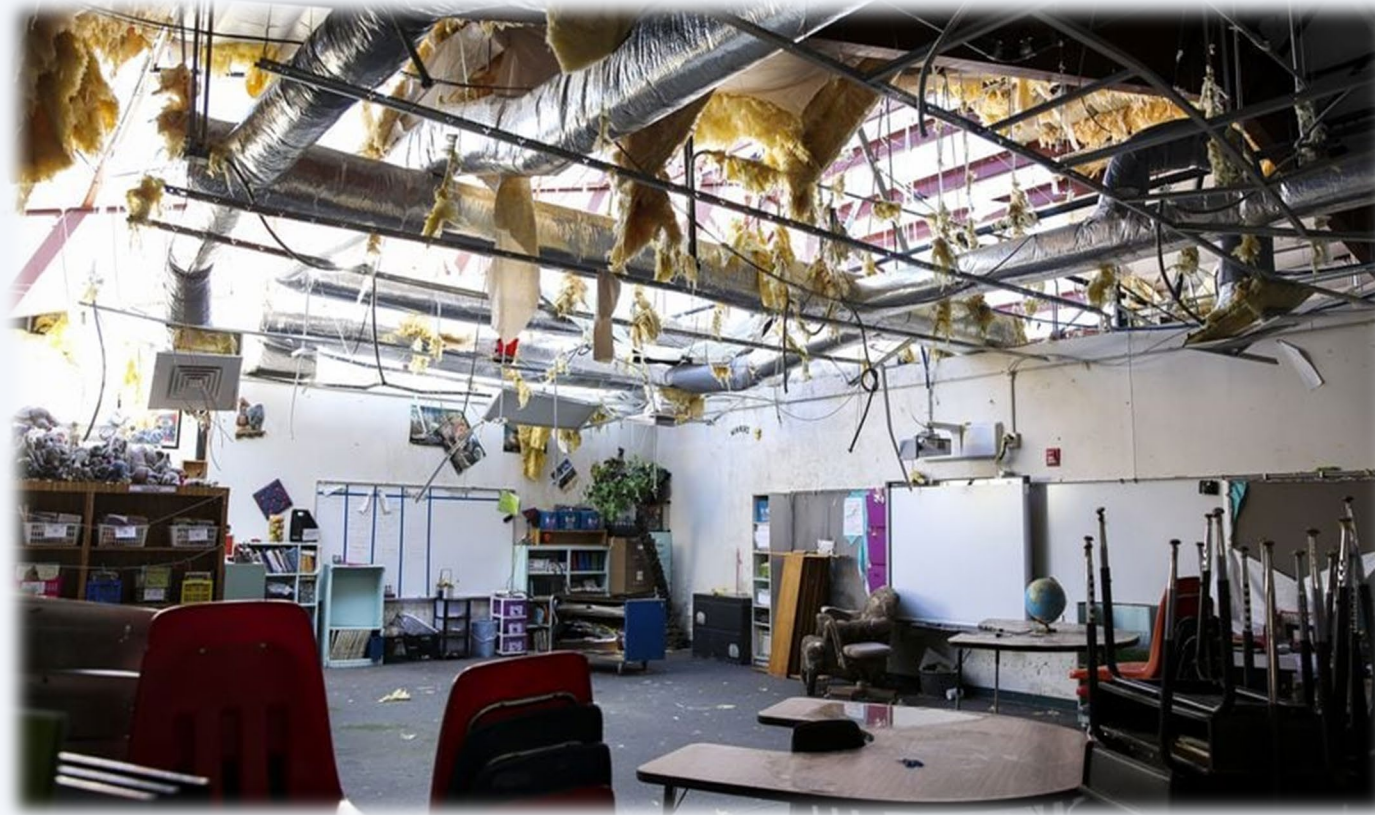


BUSINESS RESILIENCY



Readying Building Information for Emergencies

How to Prepare your Facilities for and Recover from Damage +

Speakers



Allan J. Iosue
*Director of Strategic Accounts
Municipal & Education*



Chad Kunkel
*Director
Business Resiliency Services*



Nihal Haddad Alwakeel
*Design Manager
Municipal & Education*

The Haskell Company

Our History:

*Providing Design and Construction Services
For nearly 60 years*

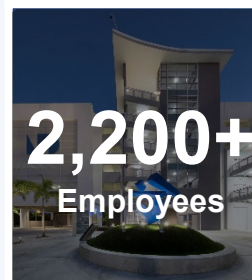
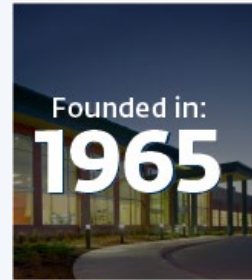
*Headquartered in Jacksonville, FL with
offices in Tampa and Miami*

Our Experience:

40 + Schools Built (2M SF)

18,000 + Student Stations Delivered

Academics | Athletics | Housing | Parking





Provider Statement

HASKELL is a registered provider of AIA-approved continuing education under Provider Number C500. All registered AIA CES Providers must comply with the AIA Standards for Continuing Education Programs. Any questions or concerns about this provider or this learning program may be sent to AIA CES (cessupport@aia.org or (800) AIA 3837, Option 3).

This learning program is registered with AIA CES for continuing professional education. As such, it does not include content that may be deemed or construed to be an approval or endorsement by the AIA of any material of construction or any method or manner of handling, using, distributing, or dealing in any material or product.

AIA continuing education credit has been reviewed and approved by AIA CES. Learners must complete the entire learning program to receive continuing education credit. AIA continuing education Learning Units earned upon completion of this course will be reported to AIA CES for AIA members. Certificates of Completion for both AIA members and non-AIA members are available upon request.

Agenda

- *Intro*
- *Survey*
- *Resiliency*
- *Organization Challenges*
- *Digital Platform Solution*
- *Case Study*
- *Questions*

Survey Question



Go to
www.menti.com
Enter the code
5925 6180

Operational Resiliency...

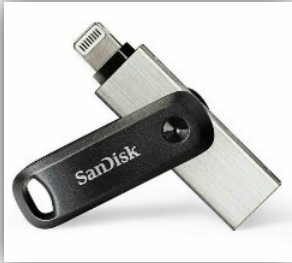
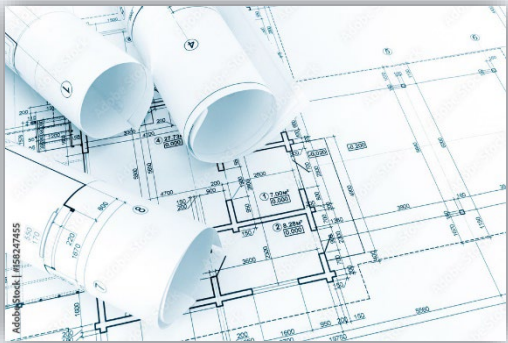
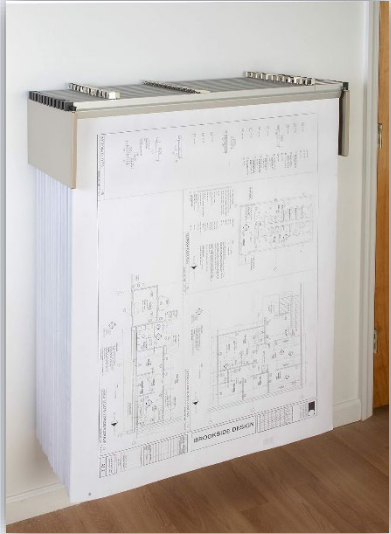
Operational Resiliency is the ability to recover from interruption level events efficiently with intentional planning, organization, and disciplined maintenance. Resiliency planning should include the following:

- Documents Digitized including emergency procedures, drawings, specifications and detailed facility information
- A centralized repository that can be accessed remotely and organized geographically
- Ability to easily update documents
- Multiple format viewers
- Quick Reference Ability

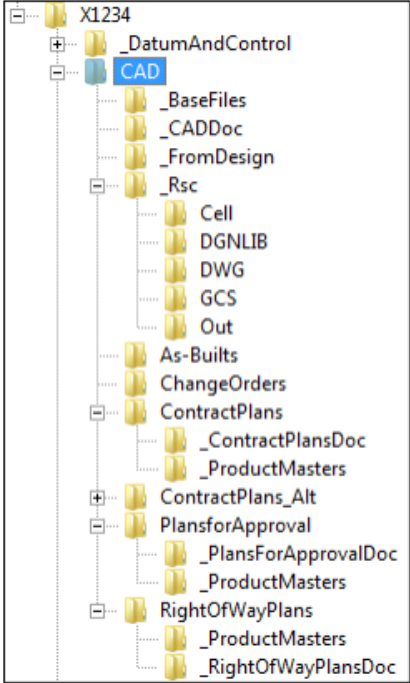
Organizational Challenges - Facility Information




Physical



Digital



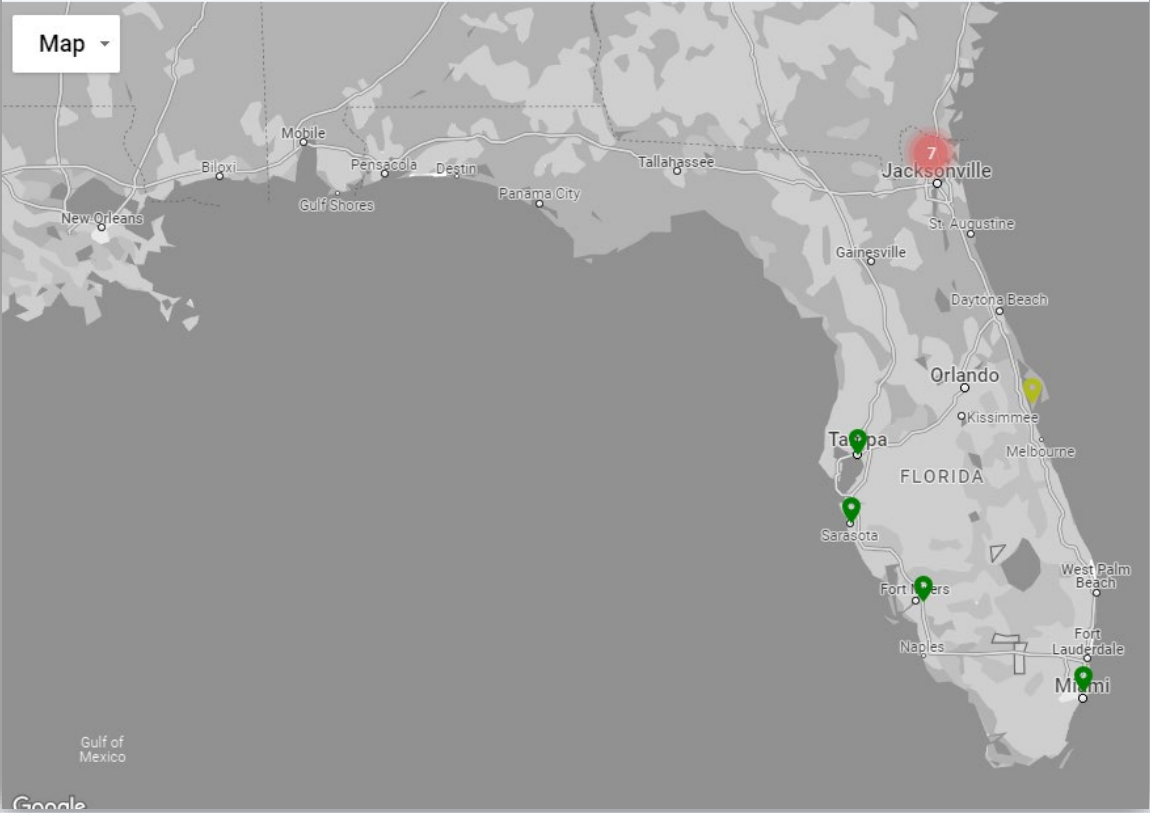
Cloud-Based Digital Platform



Company Name: Haskell
Account Representative: Chad Kunkel

Filter by facility status

Map



Google



Facility Name: Irvine
Facility Location: 505 Technology Drive
Irvine, CA, United States 92618
Preparedness Level: **High**



Facility Name: Jacksonville (245)
Facility Location: 245 Riverside Avenue
Jacksonville, FL, United States 32202
Preparedness Level: **High**



Campus Name: Jacksonville (Haskell Steel)
Total Number of Facilities: 5
Preparedness Level: **Fail**



Facility Name: Jacksonville (Headquarters)
Facility Location: 111 Riverside Avenue
Jacksonville, Florida, United States 32202
Preparedness Level: **Low**



Facility Name: Livermore
Facility Location: 365 North Canyons Parkway
Livermore, California, United States 94551
Preparedness Level: **High**

Facility Name
Jacksonville (Headquarters)



Location
111 Riverside Avenue
Jacksonville, Florida, 32202
United States

Facility Portal Menu

- Home
- BIM
- Reality Capture
- File Library
- Event Log
- Messaging
- Settings

← Corporate Home

Building Data

Construction Year
1986

Total Floor Area (SF)
122,170

Levels
5

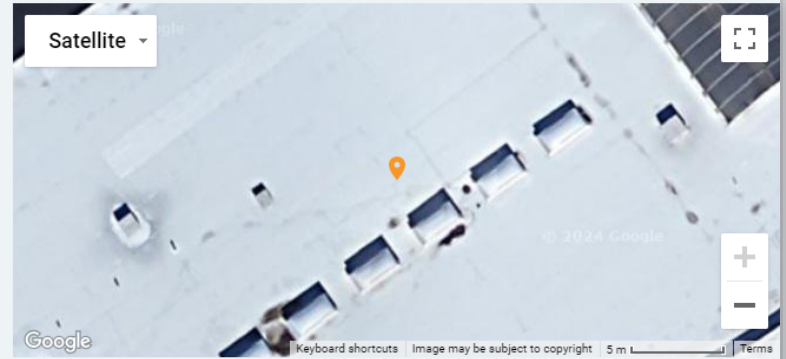
Employee Occupancy (Typ)
530

Occupied Level
1-3 Floor

Occupancy Classification
Business

Hazardous Materials?
Yes

Haskell Project Number



Critical Files

Critical Business Resilience Files

Emergency Links

Critical Controls

Critical Cntrl Axo

Evacuation Routes

Emergency Response Plan

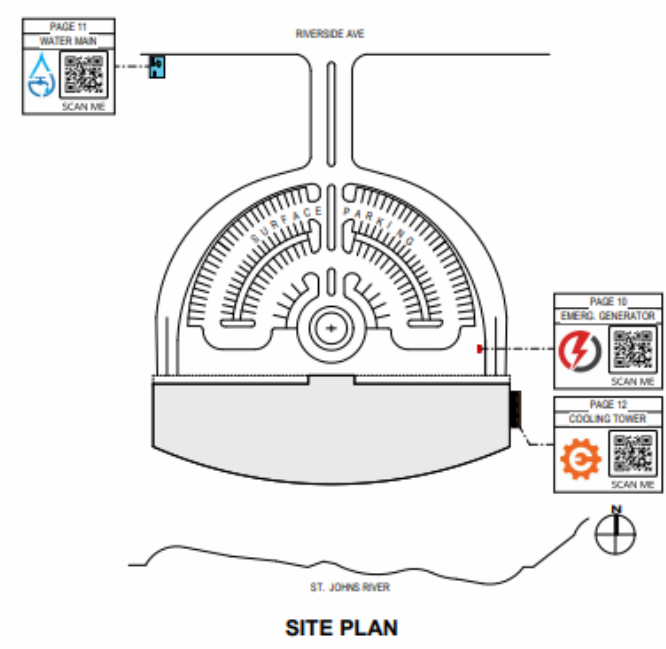
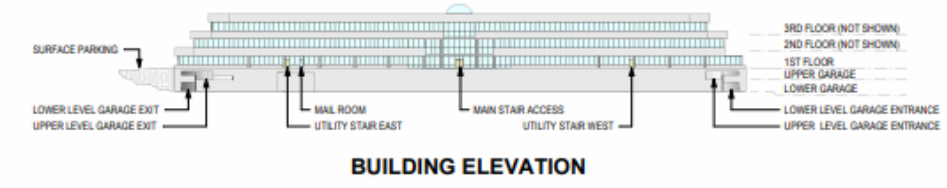
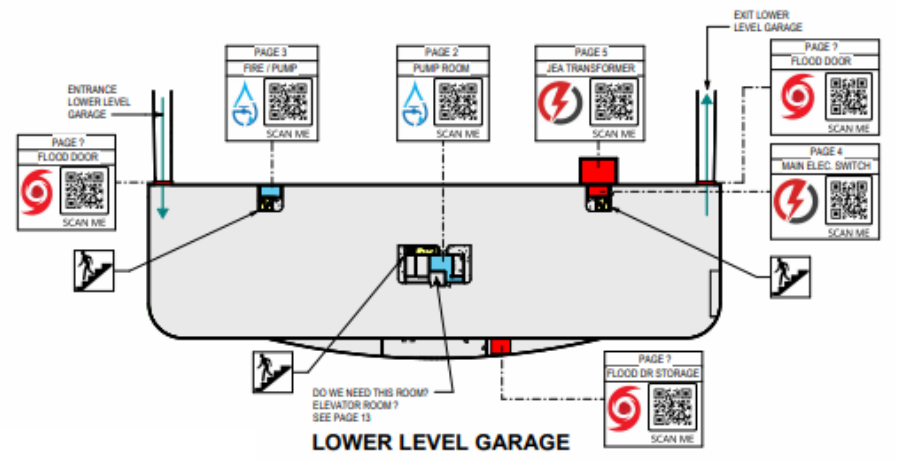
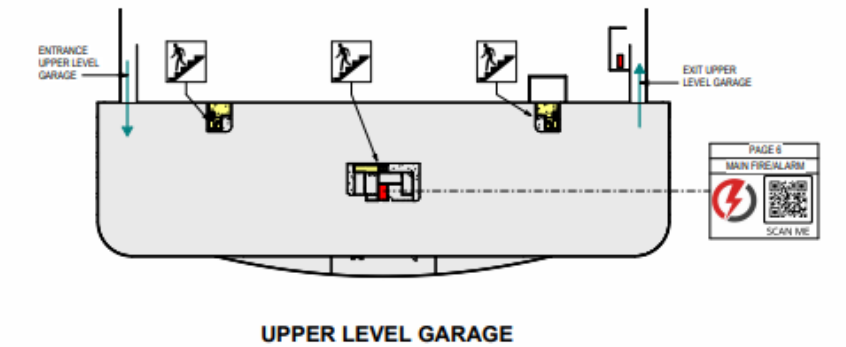
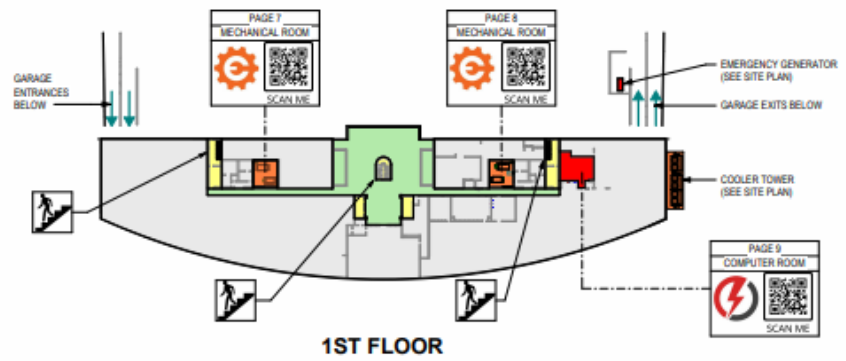
Emergency Contact List






Emergency Plan (Corporate)

Flood Door Installation

Incident Command System






-  STAIRS
-  POWER
-  WATER
-  MECHANICAL
-  STORM / FLOOD

CRITICAL CONTROL LOCATIONS

Facility Name
Jacksonville (Headquarters)



Location
111 Riverside Avenue
Jacksonville, Florida, 32202
United States

Facility Portal Menu






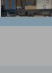
- [Home](#)
- [BIM](#)
- [Reality Capture](#)
- [File Library](#)
- [Event Log](#)
- [Messaging](#)
- [Settings](#)

[Corporate Home](#)

Haskell 2022
Powered by VIATechnik's Voyager Platform

File Library

Set Filters

Thumbnail	Document Title	Document Set	Document Subcategory	Project Name(s)
	Server Room A/C Installation Side Wall Unit 3 - Behind Server	Facilities Operation & Management	Facility Images	
	Server Room A/C Installation Side Wall Unit 2 - Behind Server	Facilities Operation & Management	Facility Images	
	Server Room A/C Installation Side Wall Unit 1 - Behind Server	Facilities Operation & Management	Facility Images	
	Server Room A/C Installation Road Side 3 - Behind Shelves	Facilities Operation & Management	Facility Images	
	Server Room A/C Installation Road Side 2 - Behind Shelves	Facilities Operation & Management	Facility Images	
	Server Room A/C Installation	Facilities Operation & Management	Facility Images	

Document Set

- [Basis of Design](#)
- [Construction Issue Drawings](#)
- [Facilities Operation & Management](#)
- [Record Document](#)
- [Record Drawings](#)
- [Submittals](#)

Document Subcategory

- [2D Drawings](#)
- [Employee Emergency Contact Info](#)
- [Facility Images](#)
- [O&M Manual](#)
- [Policies & Procedures](#)
- [Scope of Work](#)

Tags

- [Drawings](#)
- [architecture](#)
- [Critical](#)

Subcategory

- [Controls](#)
- [Equipment](#)
- [Life Safety](#)

Years

- [1985](#)
- [2018](#)
- [2020](#)
- [2022](#)
- [2023](#)



Location

111 Riverside Avenue
Jacksonville, Florida, 32202
United States

Facility Portal Menu

Home

BIM

Reality Capture

File Library

Event Log

Messaging

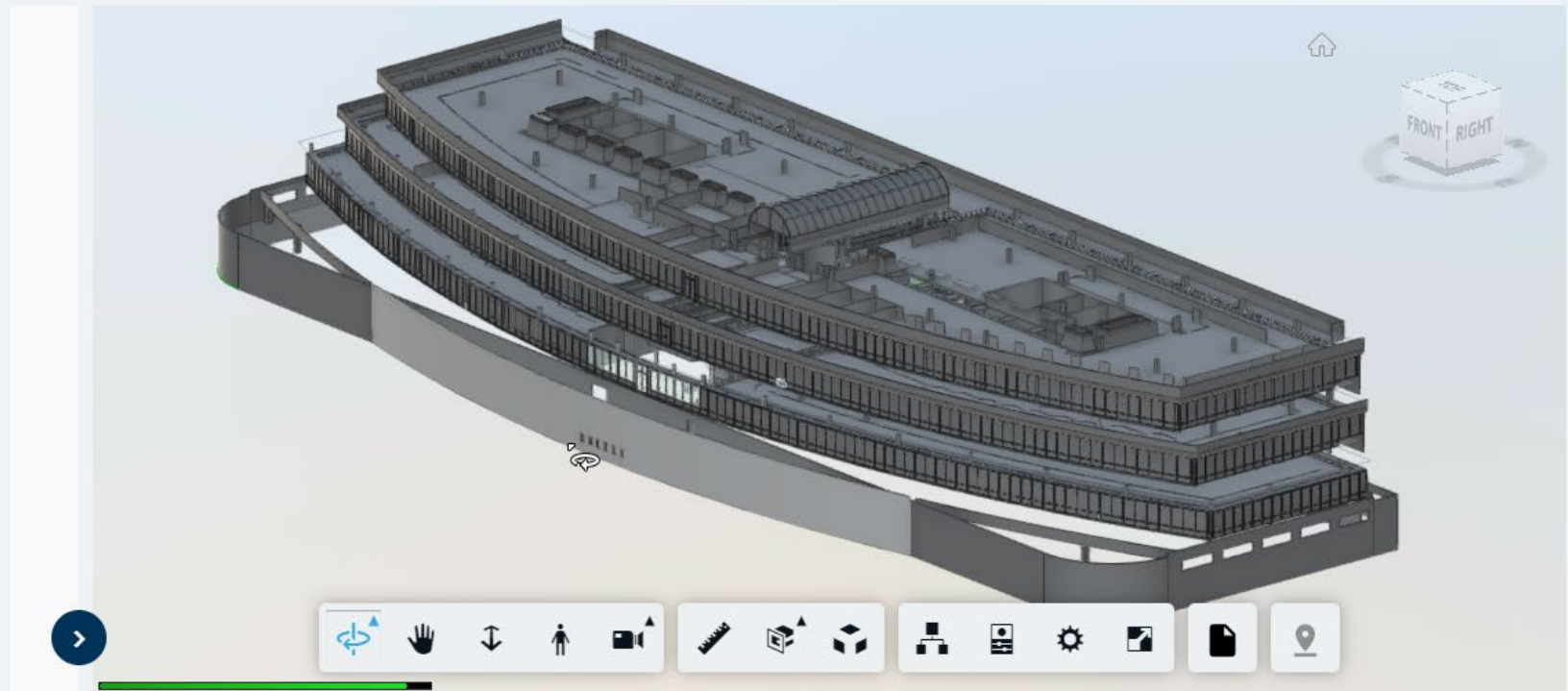
Settings

© Haskell 2022

Powered by VIATechnik's Voyager Platform

BIM Module

2022 



Facility Name
Jacksonville (Headquarters)



Location
111 Riverside Avenue
Jacksonville, Florida, 32202
United States

Facility Portal Menu

- Home
- BIM
- Reality Capture**
- File Library
- Event Log
- Messaging
- Settings

Corporate Home

© Haskell 2022

Reality Capture

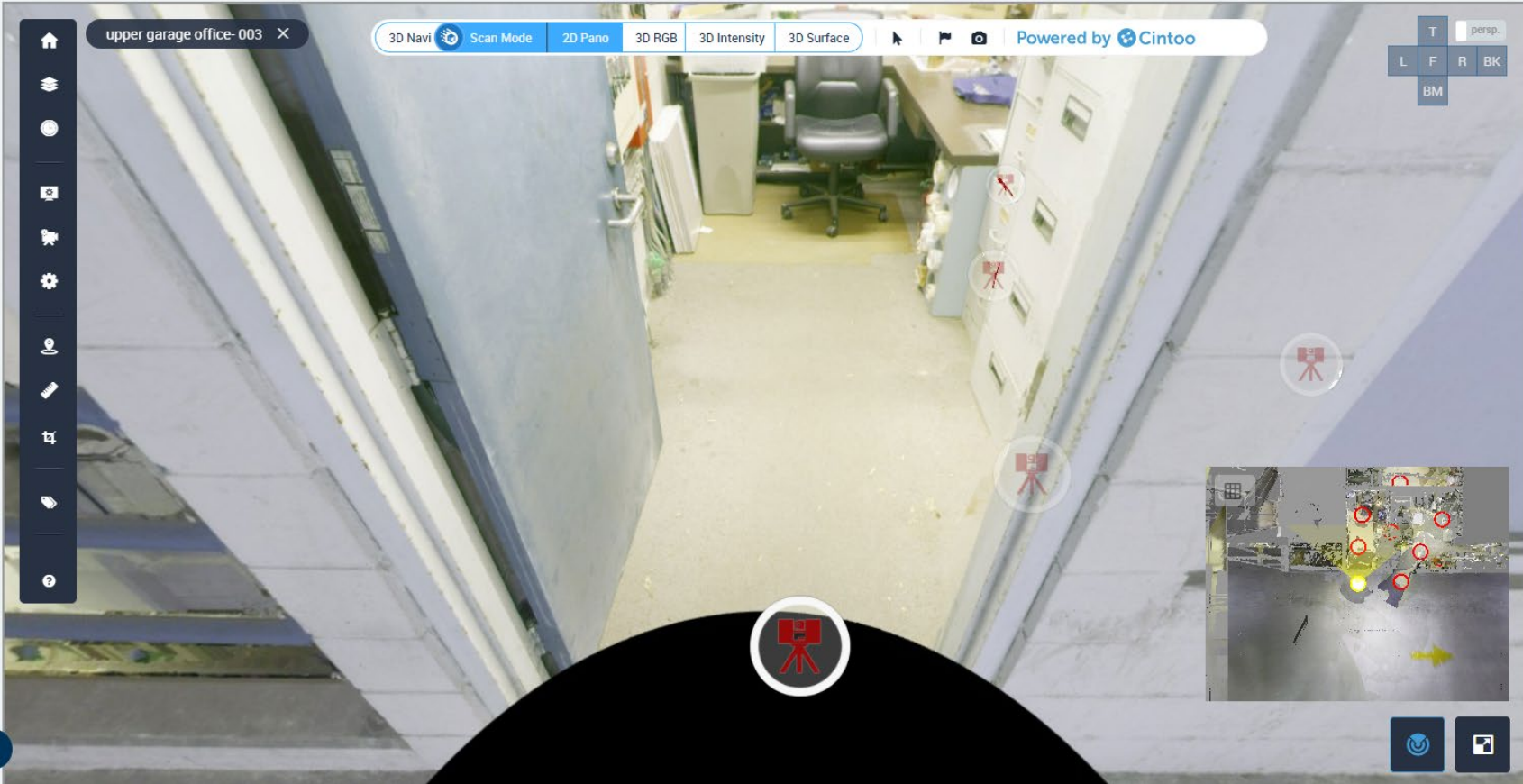
Utilities

upper garage office-003 X

3D Navi Scan Mode 2D Pano 3D RGB 3D Intensity 3D Surface

Powered by Cintoo

T persp.
L F R BK
BM



The main view shows a 3D point cloud scan of an office hallway. A camera view is overlaid on the scan, showing a perspective view of the hallway with a desk, chair, and filing cabinets. The camera view is framed by a black semi-circle at the bottom. A red camera icon is visible in the center of the black semi-circle. The scan shows a perspective view of the hallway with a desk, chair, and filing cabinets. The camera view is framed by a black semi-circle at the bottom. A red camera icon is visible in the center of the black semi-circle.

Q: So, my building information is up to date, accessible, and well organized, now what can it do for me?

A: Recovery Time Savings

- *Damage Assessment*
- *Procurement*
- *Design*

Collaboration

- *Well organized facility documents are needed routinely and useful*
- *Local fire and police can be kept up to date*

Maintenance

- *District admin personnel can have real time access to updated documents*

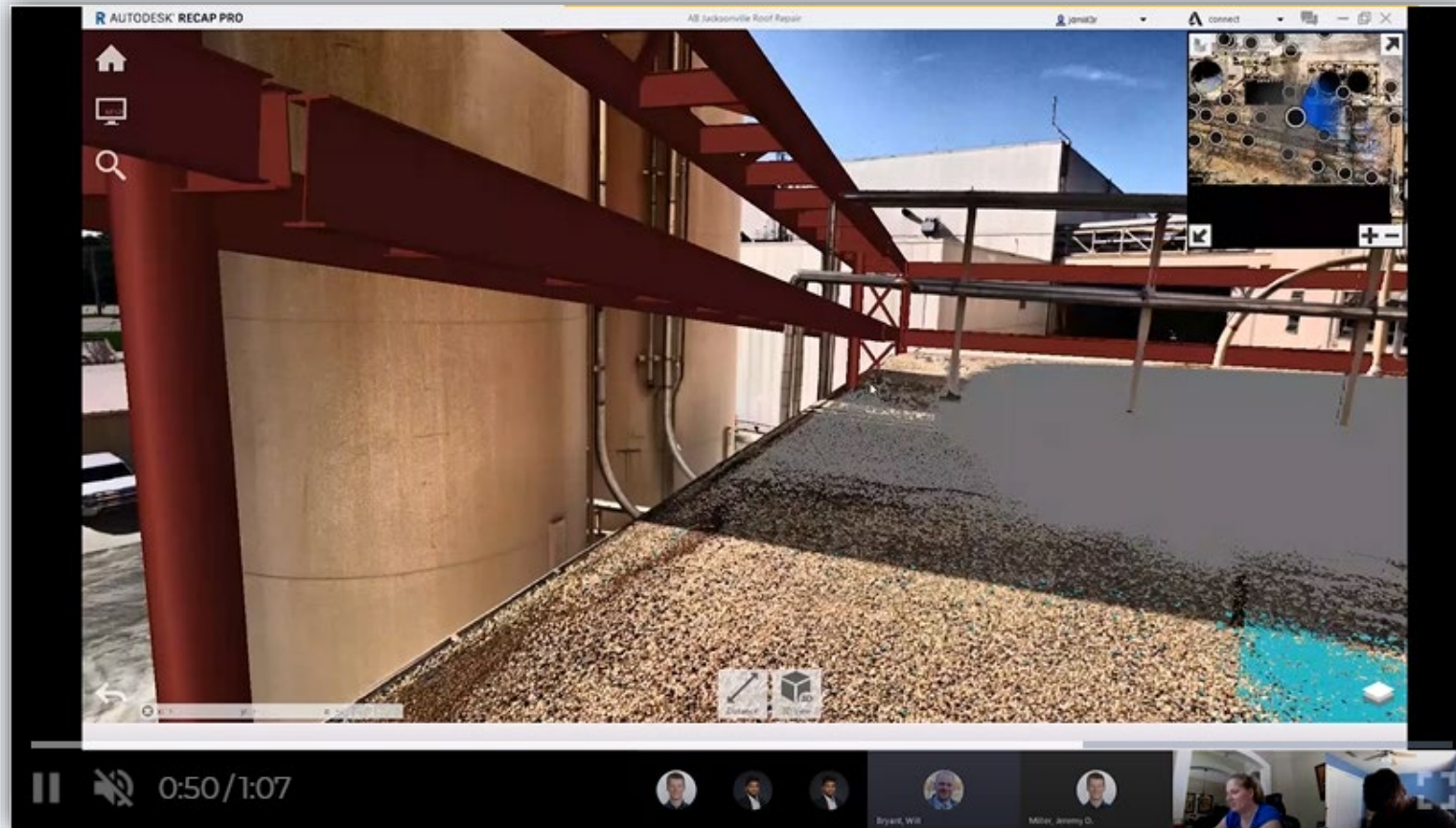
Utilizing Drones for Damage Assessment

- ◆ Drone Technology allows for the safe capture of damage data
- ◆ Analysis of post damage assessment is greatly enhanced by having an updated digital twin to analyze damage.

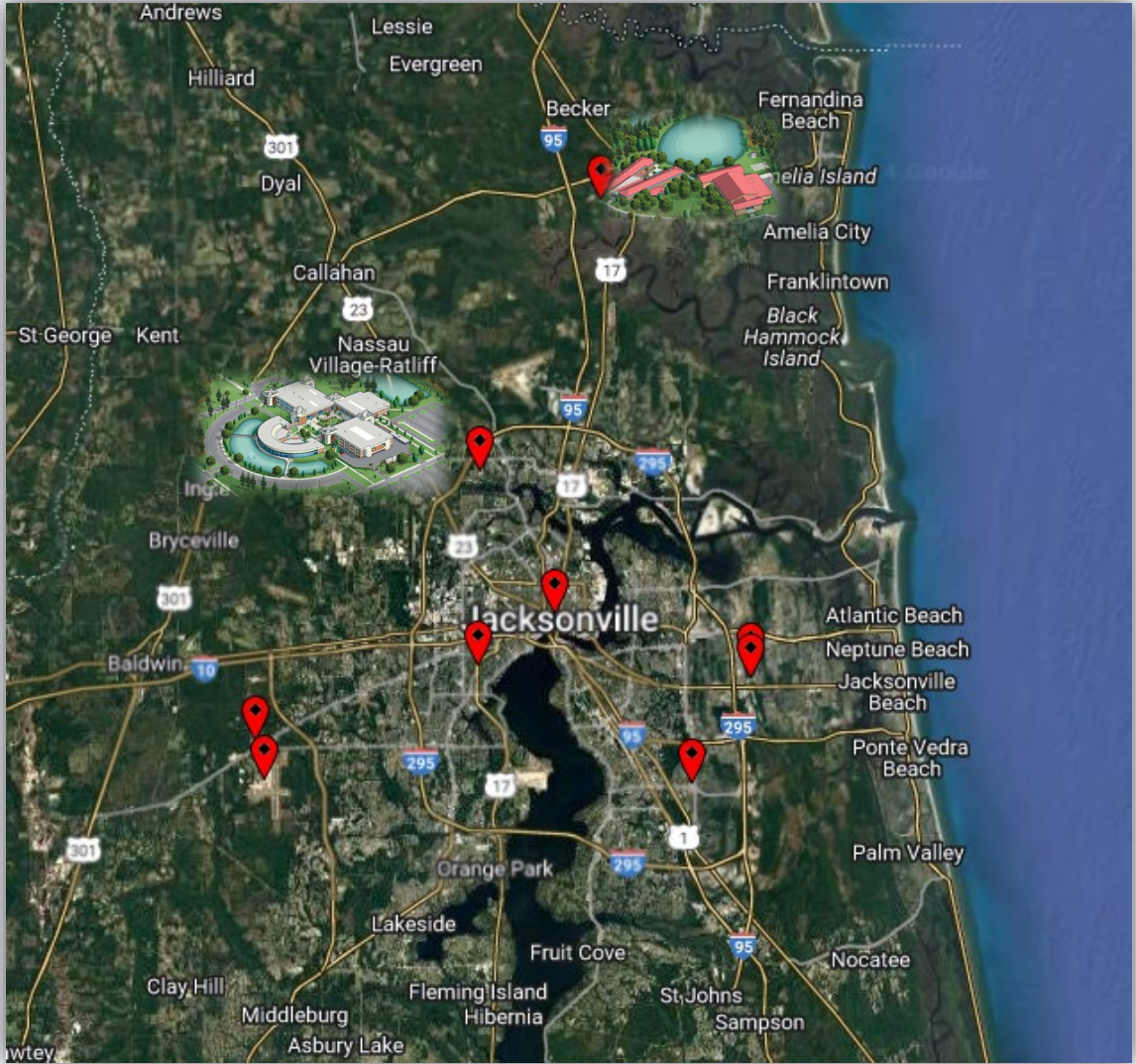


Live Collaboration

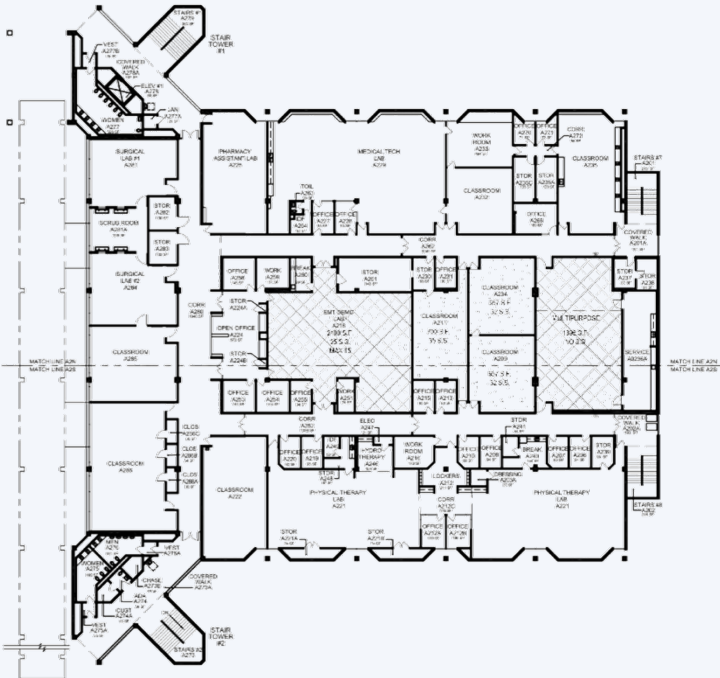
- Analysis of post damage assessment is greatly enhanced by having an updated digital twin to analyze damage.



Case Study – Florida State College of Jacksonville



Case Study – Florida State College of Jacksonville



FACILITIES MANAGEMENT & CONSTRUCTION
FLORIDA STATE COLLEGE at JACKSONVILLE
JACKSONVILLE, FL 32202
904-632-3368

SECOND FLOOR - BUILDING A
NORTH CAMPUS, SITE 2, FAC 201

AUGUST 13, 2019
A2

SECOND FLOOR 2,290 S.F.
15 S.S.



SPACE PROGRAMMING LEGEND
 Educational - Classroom area
 Educational - Shops & other Vocational

FACILITIES MANAGEMENT & CONSTRUCTION
FLORIDA STATE COLLEGE at JACKSONVILLE
JACKSONVILLE, FL 32202
904-632-3368

SECOND FLOOR - BUILDING A
NORTH CAMPUS, SITE 2, FAC 201

AUGUST 13, 2019
A2

UP TO 114 NEW S.S.
BASED ON 20 NSF/OCCUPANT

Case Study – Florida State College of Jacksonville

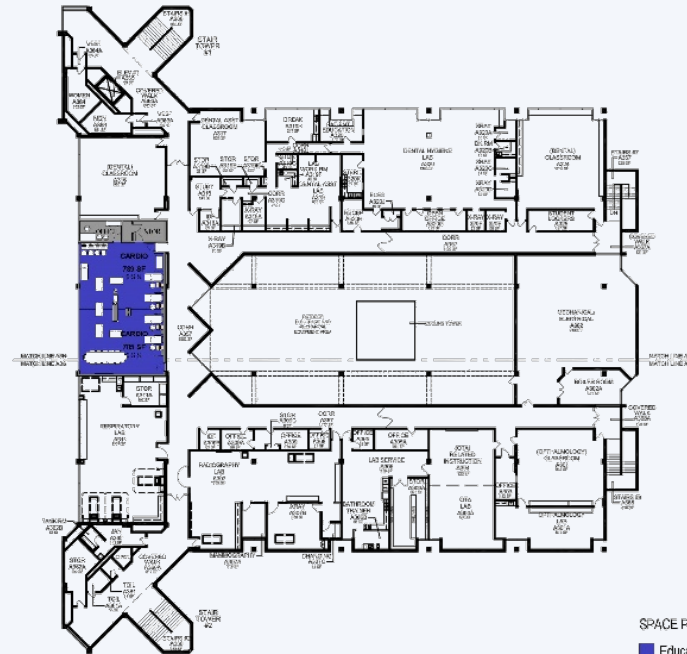


FACILITIES MANAGEMENT & CONSTRUCTION
FLORIDA STATE COLLEGE at JACKSONVILLE
JACKSONVILLE, FL 32202
904-632-3368

FIRST FLOOR - BUILDING T
NASSAU CENTER, SITE 6, FAC 30

AUGUST 16, 2019
T1

TWO CARDIO LABS
824 S.F. EACH / 9 S.S. EACH
BASED ON 85 NSF/OCCUPANT
TOTAL 18 S.S.



SPACE PROGRAMMING LEGEND
■ Educational - Shops & other Vocational

THIRD FLOOR - BUILDING A
NORTH CAMPUS, SITE 2, FAC 201

AUGUST 13, 2019
A3

FACILITIES MANAGEMENT & CONSTRUCTION
FLORIDA STATE COLLEGE at JACKSONVILLE
JACKSONVILLE, FL 32202
904-632-3368

TWO CARDIO LABS
787 S.F. EACH / 9 S.S. EACH
BASED ON 85 NSF/OCCUPANT
TOTAL 18 S.S.

🏠 Campus Name

North Campus

📍 Location

4501 Capper Road
Jacksonville, FL, 32218
United States

Facility Portal Menu

🏠 Home

🏗️ BIM

📷 Reality Capture

📁 File Library

📅 Event Log

💬 Messaging

⚙️ Settings

← Corporate Home

© Haskell 2022


Reality Capture

A236 - Conference Rm

A316 - Classroom

A314 - Open Office


Conference_RM_023 ✕


Scan Mode  3D Navi

Length: 10' - 11 28/64" / Height : 8' - 9 28/64" / Width : 6' - 6 30/64" / Angle : 53.34° ✕

T persp.
L F R BK
BM

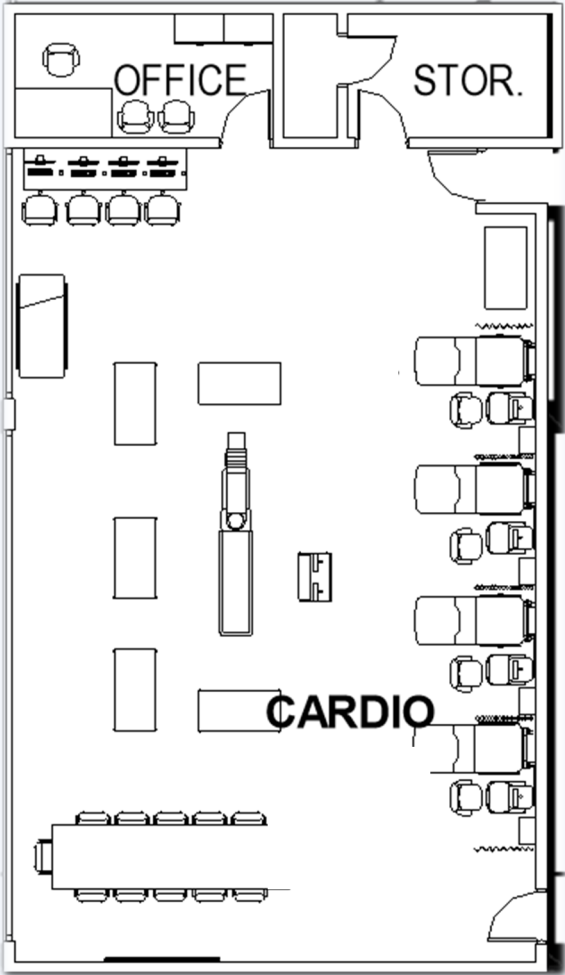
L: 10' - 11 28/64"
y: 6' - 4 44/64"

MEASUREMENTS  ✕

Powered by  Cintoo


CANCEL MEASUREMENT Freehand ▾

Case Study – Florida State College of Jacksonville



Case Study – Florida State College of Jacksonville

Facility Name
Building A - North



Campus Name
North Campus

Location
4501 Capper Road
Jacksonville, FL, 32218
United States

Facility Portal Menu


- Home
- BIM**
- Reality Capture
- File Library
- Event Log
- Messaging

© Haskell 2022
Powered by VIATechnik's Voyager Platform

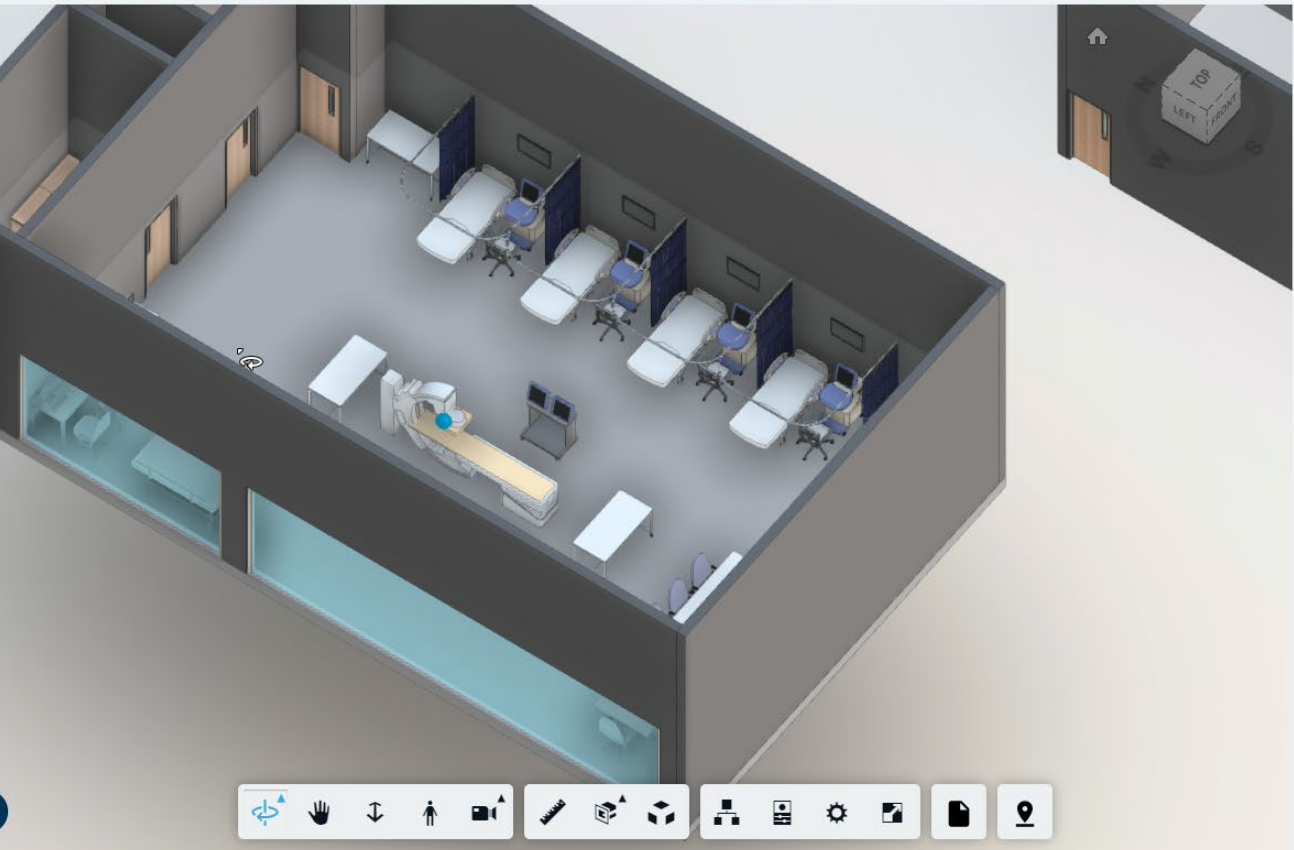
BIM Module

2022


Key BIM Data | Pin Layers



No Building Data Available
Please update building data in BIM360



Top
LEFT
FRONT



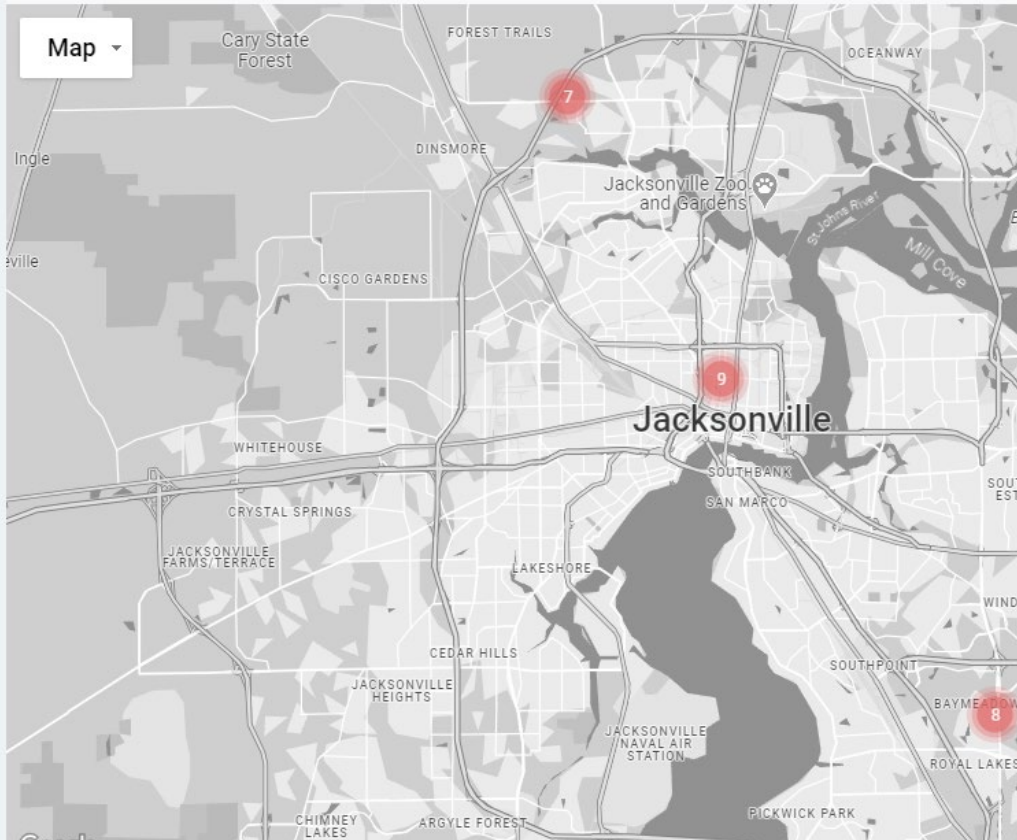
Case Study – Florida State College of Jacksonville



Florida State College at Jacksonville

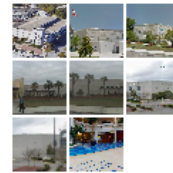
- Company Name Florida State College at Jacksonville
- Account Representative Allan Iosue

Filter by facility status



Campus View

Search



- Campus Name Deerwood Center
- Total Number of Facilities 8
- Preparedness Level



- Campus Name Downtown Campus
- Total Number of Facilities 9
- Preparedness Level



- Facility Name Administrative Offices - Downtown
- Facility Location Jacksonville, FL, United States 32202
- Preparedness Level



- Facility Name Advanced Technology Center - Downtown
- Facility Location Jacksonville, FL, United States 32202
- Preparedness Level


Case Study – Florida State College of Jacksonville





Facility Portal Menu


- Home
- BIM
- Reality Capture
- File Library
- Event Log
- Messaging

Haskell 2022

Powered by VIATechnik's Voyager Platform


Building Data 

Construction Year  1970	Total Floor Area (SF)  117,000	Levels  3	Employee Occupancy (Typ)  2,340
---	--	---	---



Critical Files

- Critical Business Resilience Files

Emergency Links 

- Campus Map
- Interactive Map

Questions?



Questions?



Allan J. Iosue

*Director of Strategic Accounts
Municipal & Education*

- O: 904.357.4972
- C: 904.445.8380
- Allan.Iosue@haskell.com



Cha Kunkel

*Director
Business Resiliency Services*

- O: 904.357.4810
- C: 904.424.8806
- Chad.Kunkel@Haskell.com



Nihal Haddad Alwakeel

*Design Manager
Municipal & Education*

- O: 904.791.4700
- C: 904.763.3133
- Nihal.Alwakeel@haskell.com