

# MAGNOLIA SCHOOL & LEARNING CENTER

OCPS Exceptional Student Education Campus Consolidation

FEFPA Winter 2020 Conference

Cathie Sullivan, AIA - Senior Facilities Manager Design, OCPS

Leigh Austin, Ed.D. - Director, ESE Specialized Services, OCPS

Jack Williams, AIA - Principal, Harvard Jolly Architecture



**HARVARD • JOLLY**  
ARCHITECTURE

# MAGNOLIA SCHOOL & LEARNING CENTER

OCPS Exceptional Student Education Campus Consolidation

FEFPA Winter 2020 Conference

PROGRAM OVERVIEW

CAMPUS DESIGN

MAGNOLIA SCHOOL

THE LEARNING CENTER

QUESTIONS



**HARVARD • JOLLY**  
ARCHITECTURE

# ORANGE COUNTY PUBLIC SCHOOLS



**Magnolia School**



**Cherokee School**



**Gateway School**

- Consolidation of 3 Schools on 1 Campus
- Magnolia School for Students with Moderate to Severe Intellectual Disabilities
- Cherokee (K-5) and Gateway Schools combined into the Learning Center for Students with Emotional Behavior Disorder

# ORANGE COUNTY PUBLIC SCHOOLS

7<sup>th</sup>

LARGEST DISTRICT  
IN THE NATION

OVER

212K

STUDENTS



RAPID INCREASE  
IN STUDENTS  
WITH AUTISM

OVER

21K

STUDENTS WITH  
DISABILITIES

CDC

1 IN 52

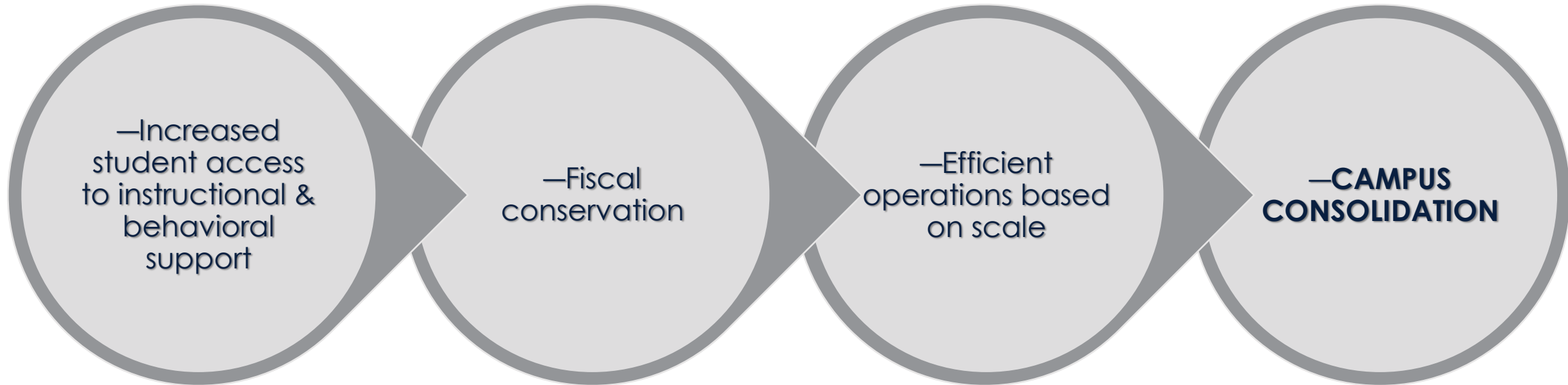
CHILDREN WILL  
HAVE AUTISM

**Orange County Public Schools**

**Your  School District**

# ESE CAMPUS CONSOLIDATION

## PHILOSOPHY for SPECIAL DAY SCHOOL CONSOLIDATION



# ESE CAMPUS CONSOLIDATION

## MAGNOLIA SCHOOL

- Serves 150 middle and high school students who need intensive support
- Students with intellectual disabilities and autism
- Self Determination
- Self Advocacy
- Wellness – track, gym with specialized equipment
- Art and Music
- Standard diploma via Florida State Alternate Assessment
- Career training through Bridges Program
- Life Skills lab for independence training



# ESE CAMPUS CONSOLIDATION

## CAREER TRAINING THROUGH BRIDGES

- Culinary Arts
- Commercial Laundry
- Hospitality Industry
  - Housekeeping
  - Mock Hotel Room
- Recycling Center
- Card Making and Store
- Agricultural Lab
  - Greenhouse
  - Gardens
- Clerical Support Lab



# ESE CAMPUS CONSOLIDATION

## UNIVERSAL DESIGN for LEARNING at MAGNOLIA

- Classrooms with nook for self-regulation
- Shared planning offices between classrooms with windows to monitor students
- De-escalation rooms with storage for mats
- Sensory room for calming and refocusing
- Flexible furniture to accommodate varied leaning styles





# ESE CAMPUS CONSOLIDATION

## LEARNING CENTER

- Serves 122 students in K-12 with significant Emotional Behavior Disorder
  - Separate entrances
  - Staggered arrival and dismissal times
  - Separate Media Centers, Dining Room, Art and Physical Education
  - Distributed zones of staff supervision offices for student behavior management
- Focus on learning through self-regulation
- Students on Standard Diploma via Florida State Standards
- Career and Technical Education training



# ESE CAMPUS CONSOLIDATION

## CAREER TECHNICAL EDUCATION at LEARNING CENTER

CULINARY ARTS



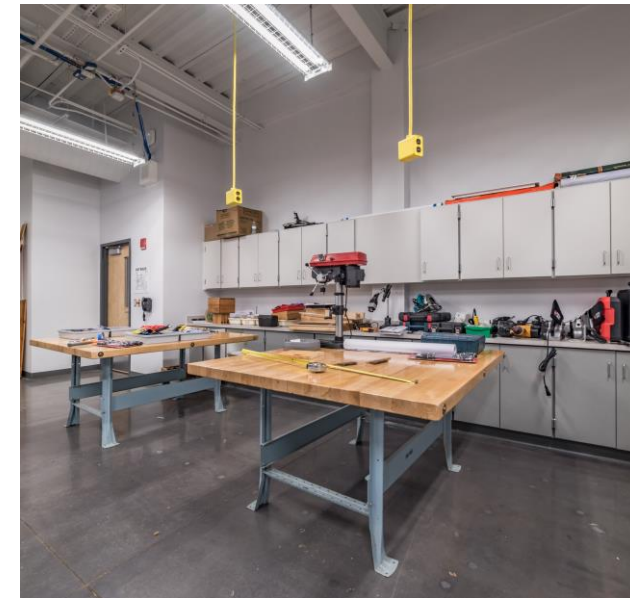
DIGITAL DESIGN



PATIENT CARE



INDUSTRIAL ARTS



# ESE CAMPUS CONSOLIDATION

## UNIVERSAL DESIGN at LEARNING CENTER

- Classrooms separated into elementary, middle and high
- Security between elementary and secondary
- Fencing to separate students from both schools interacting
- Separation of entrances and administration circulation
- LED Signage for each school
- De-escalation rooms for calming and refocusing in elementary
- Flexible furniture to accommodate varied learning styles



# ESE CAMPUS CONSOLIDATION



## **1/2 Penny Sales Tax**

### HOW DO WE GAIN MOMENTUM?

- School board member lobbied for improved facilities
- Magnolia School property can accommodate a second school
- Centrally located within the County
- Existing property (Gateway and Cherokee Schools) potential for reuse or sale
- Funded by Orange County Half-Cent Penny Sales Tax

# THREE SEPARATE ESE CAMPUSES



## Magnolia School

- 150 Middle and High School Students
- Circa 1970's & 80's Campus
- Residential Neighborhood
- **Severe Intellectual Disabilities**



## Cherokee School

- 48 Elementary School Students
- Circa 1926 Campus
- Residential Neighborhood off 408
- **Severe Behavior Disorders**



## Gateway School

- 59 Middle and High School Students
- Circa 1961 Campus
- Industrial Park Location
- **Severe Behavior Disorders**



# EXISTING SITE

150 Middle & High School Students

Circa 1970's & 80's Campus

30 Acres

Residential Neighborhood

Severe Cognitive Disabilities

Occupied Campus



# EXISTING SITE

Severely Sloping Site

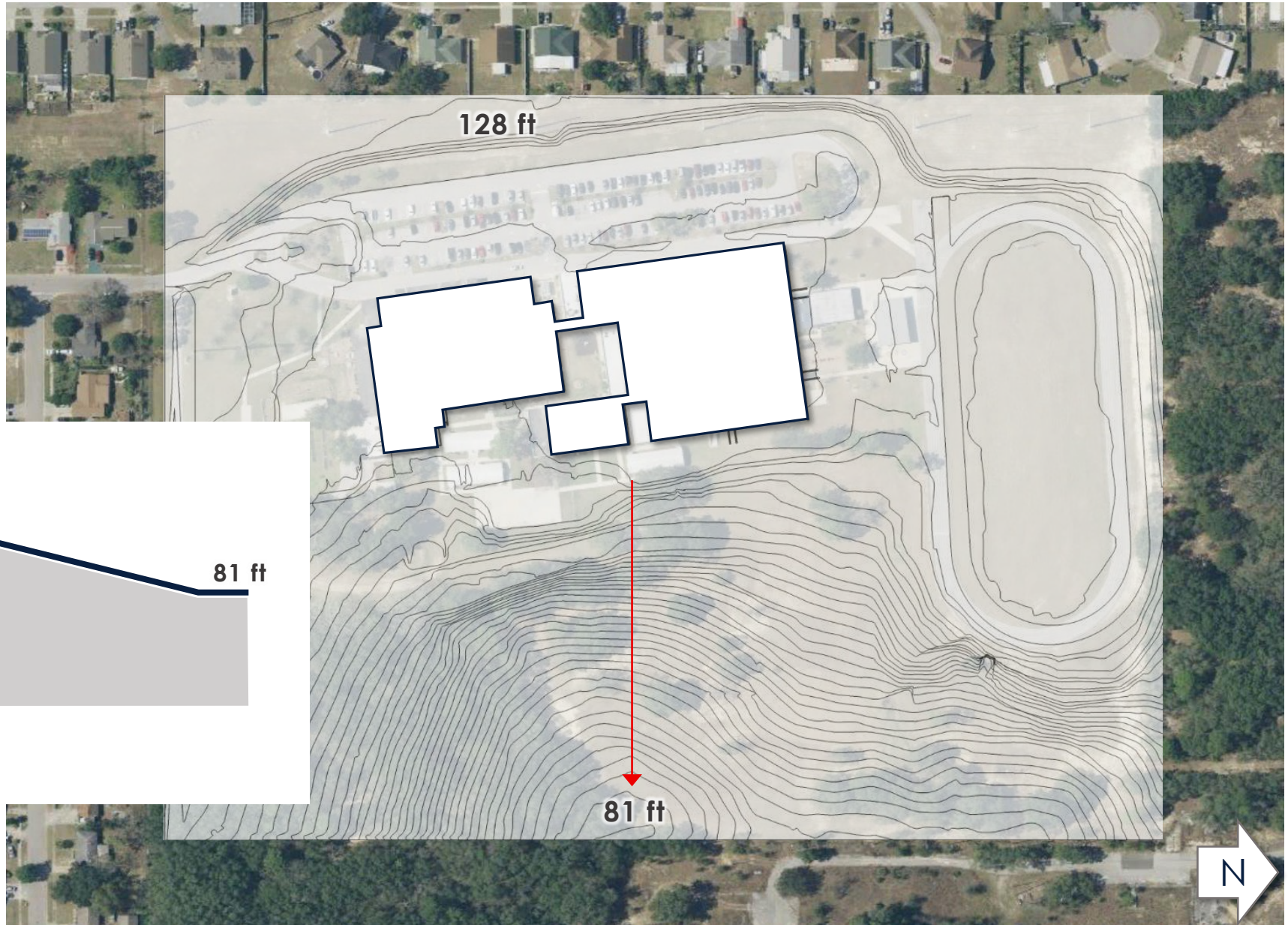
47 ft drop

128 ft

Magnolia School

81 ft

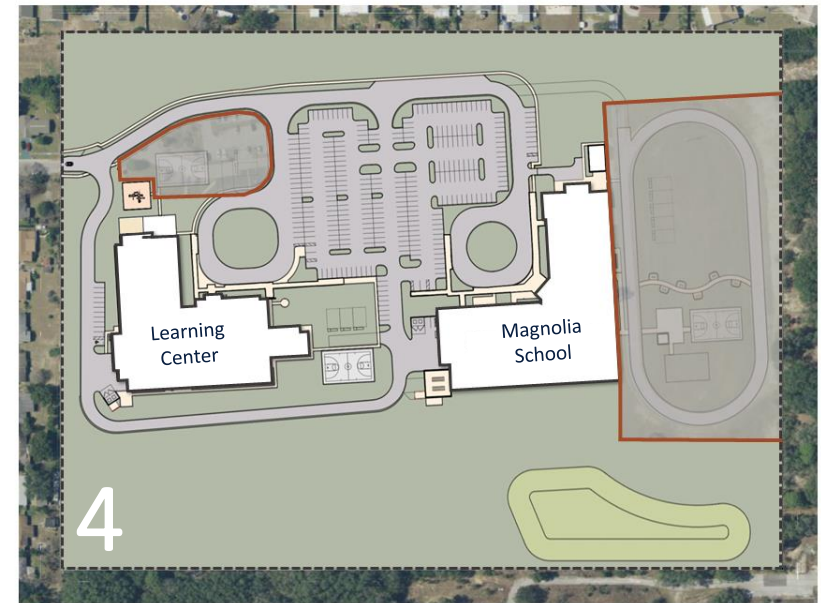
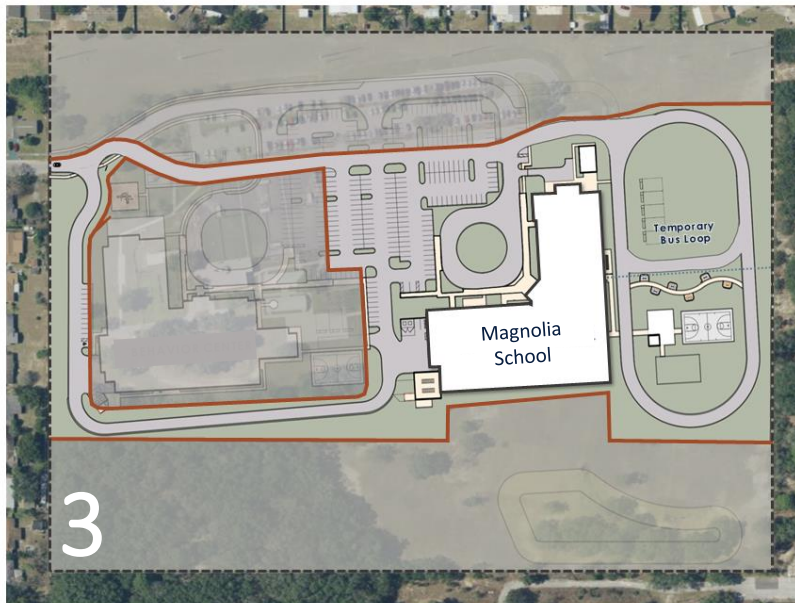
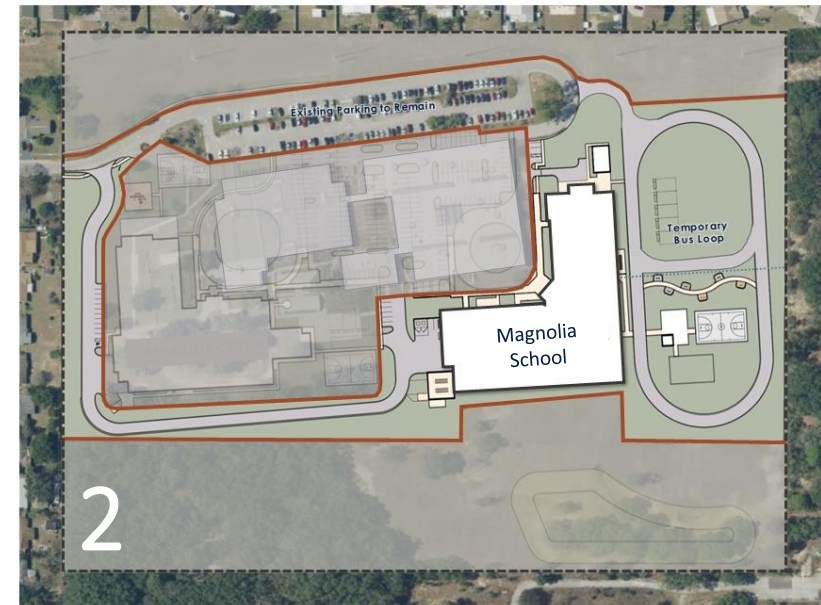
Site Section



# PHASING

Occupied Campus

Phasing significantly influenced design





# SHARED SITE

Magnolia School  
(71,000 sf)



Parent Drop/Pick Up  
(no traditional loop)

Service Drive

Learning Center  
(75,000 sf)

Oversized parking reflects high staff to student ratio (also for events)

Majority of students are bus riders

Shared Entrance Drive

# LEARNING CENTER

Grades 6-12 PE play field (secured)

Parent/Visitor Parking

Bus Loop at "Front Door" (staggered schedule)

Grades 6-12 Entry

K5 Entry

Learning Center



K5 PE play field (secured)

# MAGNOLIA SCHOOL

Fitness Trail

Main Entry

Shared Central Energy Plant

400M 6-Lane Track  
(Special Olympics training)

Secure PE play field

Greenhouse

Ag Gardens

Parent/Visitor  
Parking



Expanded bus loop

Bus Loop at "Front Door"

# Magnolia School



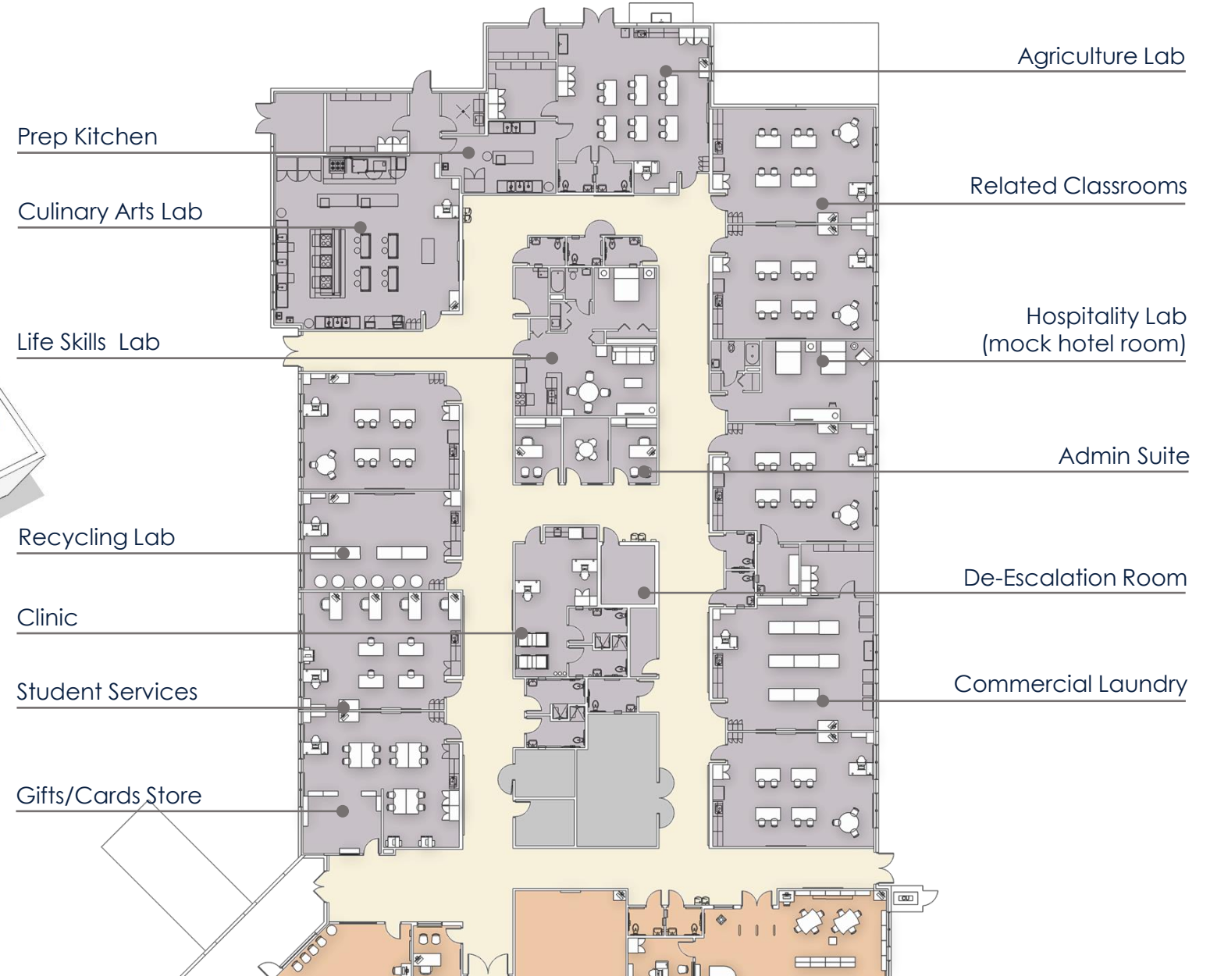
# Magnolia School



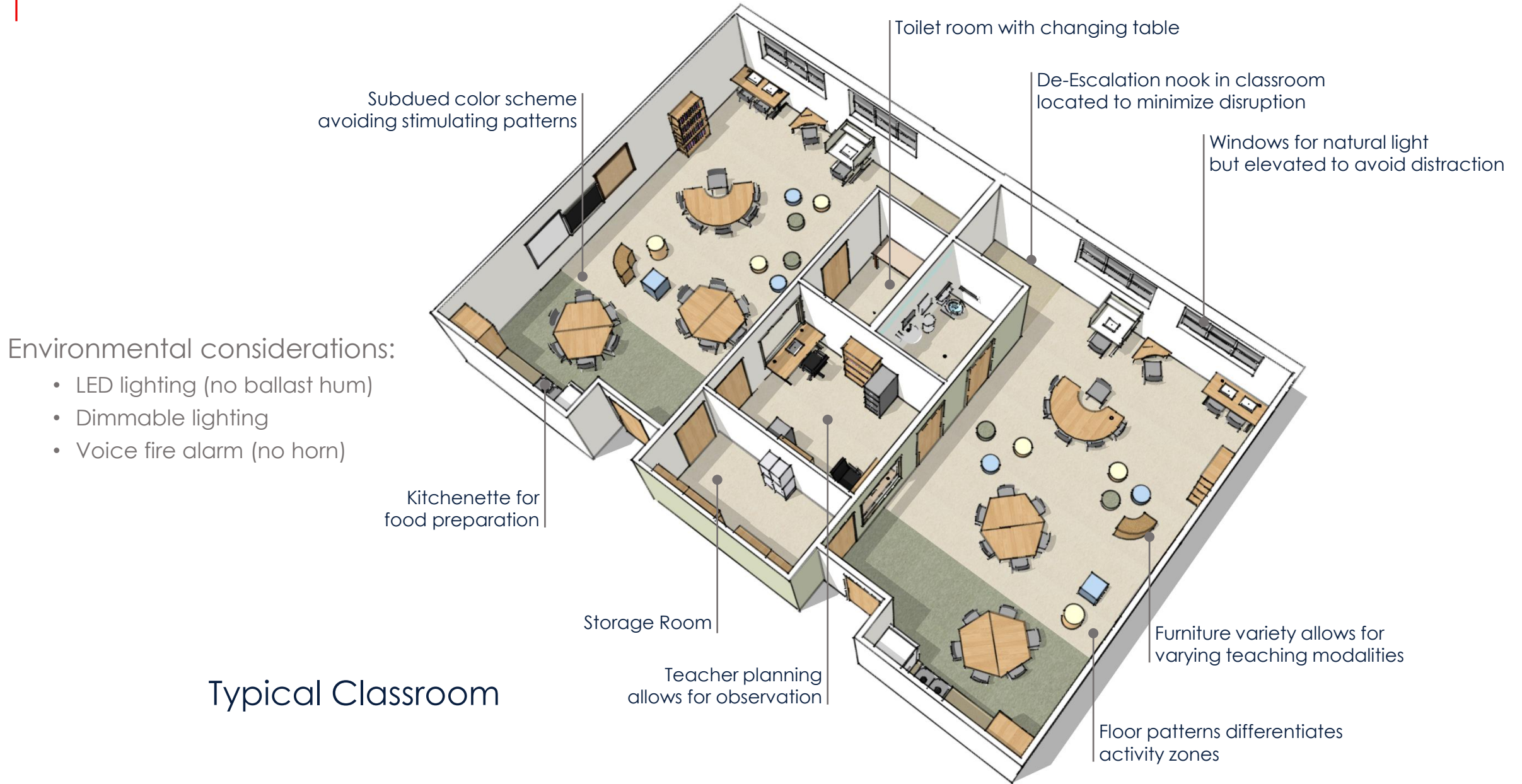
# Magnolia School



Life Skills Lab



# Magnolia School



Typical Classroom

# GUIDING DESIGN PRINCIPAL - COLOR

## ASD – Friendly Color Palette Chosen by Children

University of Kingston research project  
on color palette for Autism

### Process

85 colors presented as options

Teachers & Committee selected 23 colors

Children ages 3 -17 selected favorites

- Subdued colors mixed with grey favored
- Predominant colors in Blue/Green hue
- Balance of colorfulness and greyness

**Autistic children see colors with greater intensity  
than non-autistic children**





# GUIDING DESIGN PRINCIPAL - COLOR

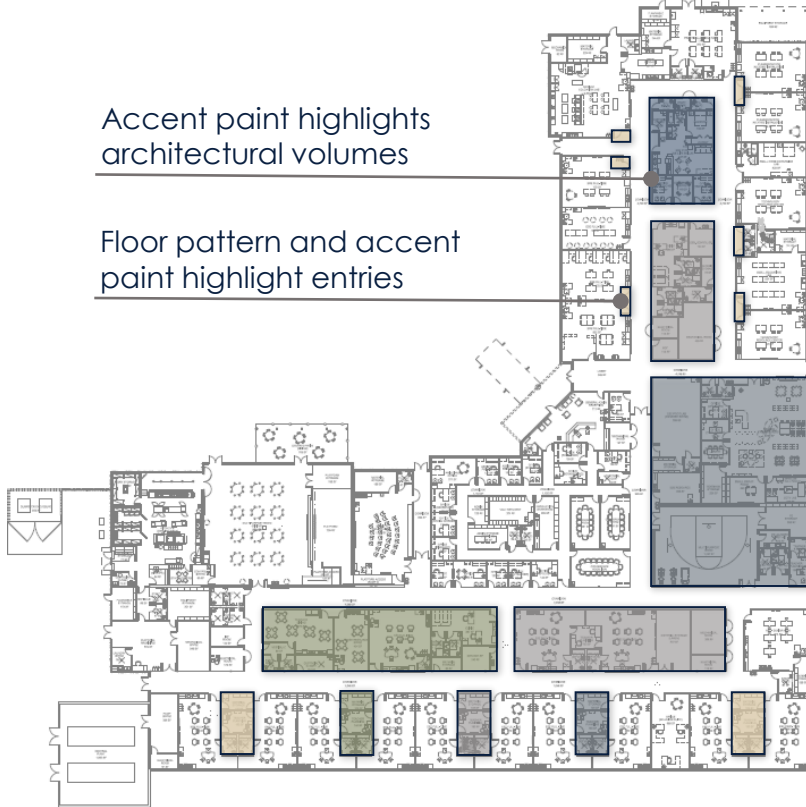
## Color Palette

SW 7042 <b>Shoji White</b> Interior / Exterior Locator Number: 254-C4	SW 6073 <b>Perfect Greige</b> Interior / Exterior Locator Number: 242-C3	SW 6120 <b>Believable Buff</b> Interior / Exterior Locator Number: 141-C1	SW 6177 <b>Softened Green</b> Interior / Exterior Locator Number: 213-C2	SW 9139 <b>Debonair</b> Interior / Exterior Locator Number: 221-C4	SW 6240 <b>Windy Blue</b> Interior / Exterior Locator Number: 224-C2	SW 9072 <b>Dried Lavender</b> Interior / Exterior Locator Number: 189-C4
--	---	--	---	---	---	---



Accent paint highlights architectural volumes

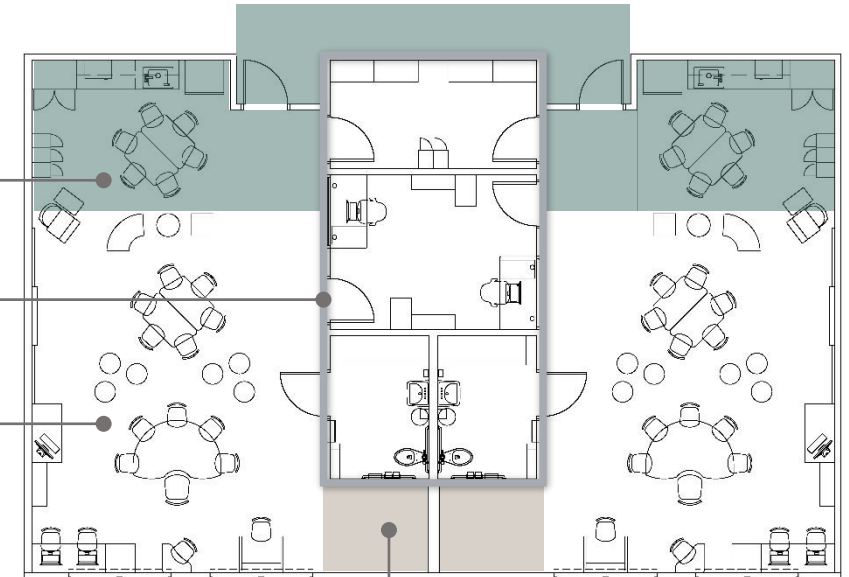
Floor pattern and accent paint highlight entries



Entry & Dining

Accent Wall Paint

Teaching

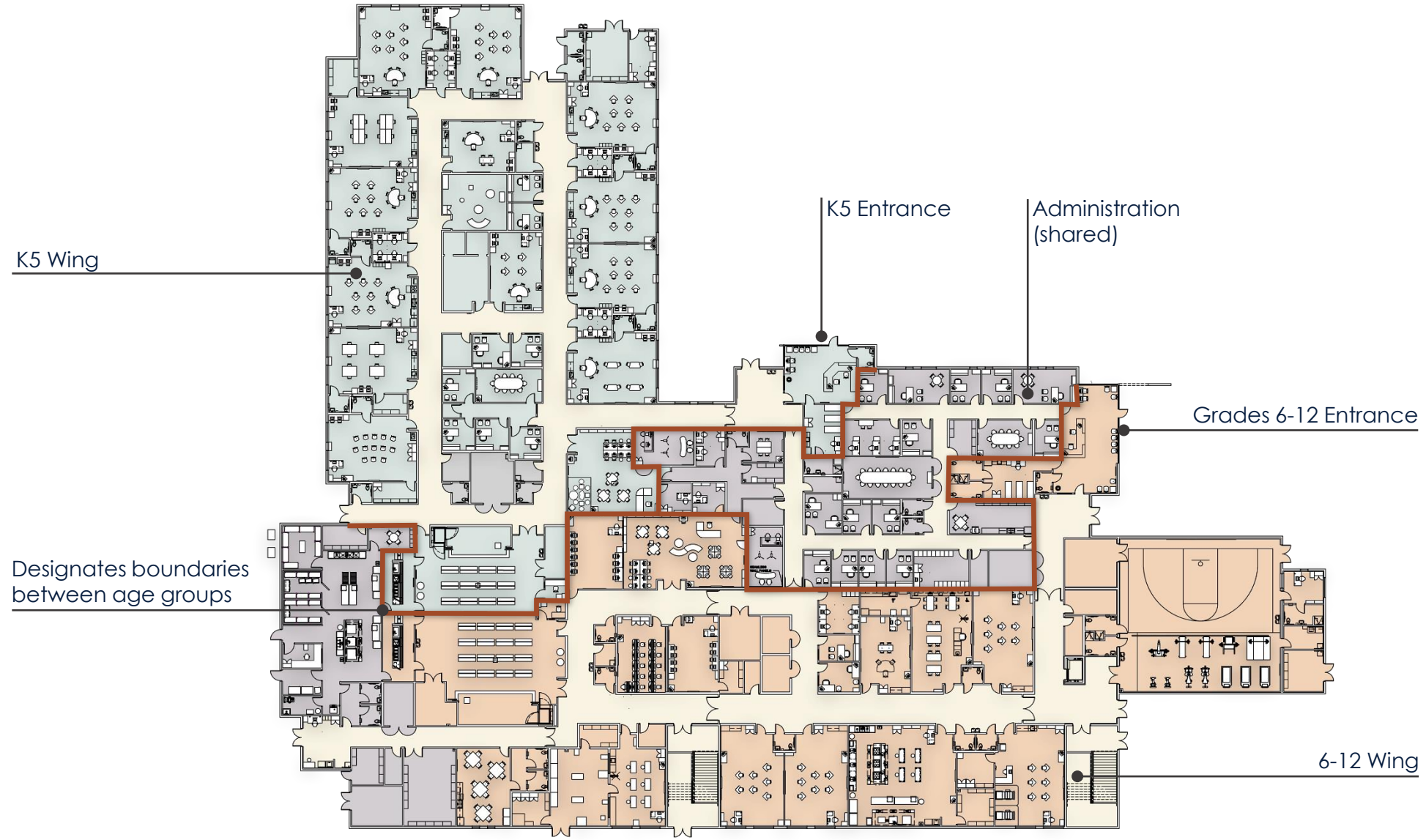


Calming

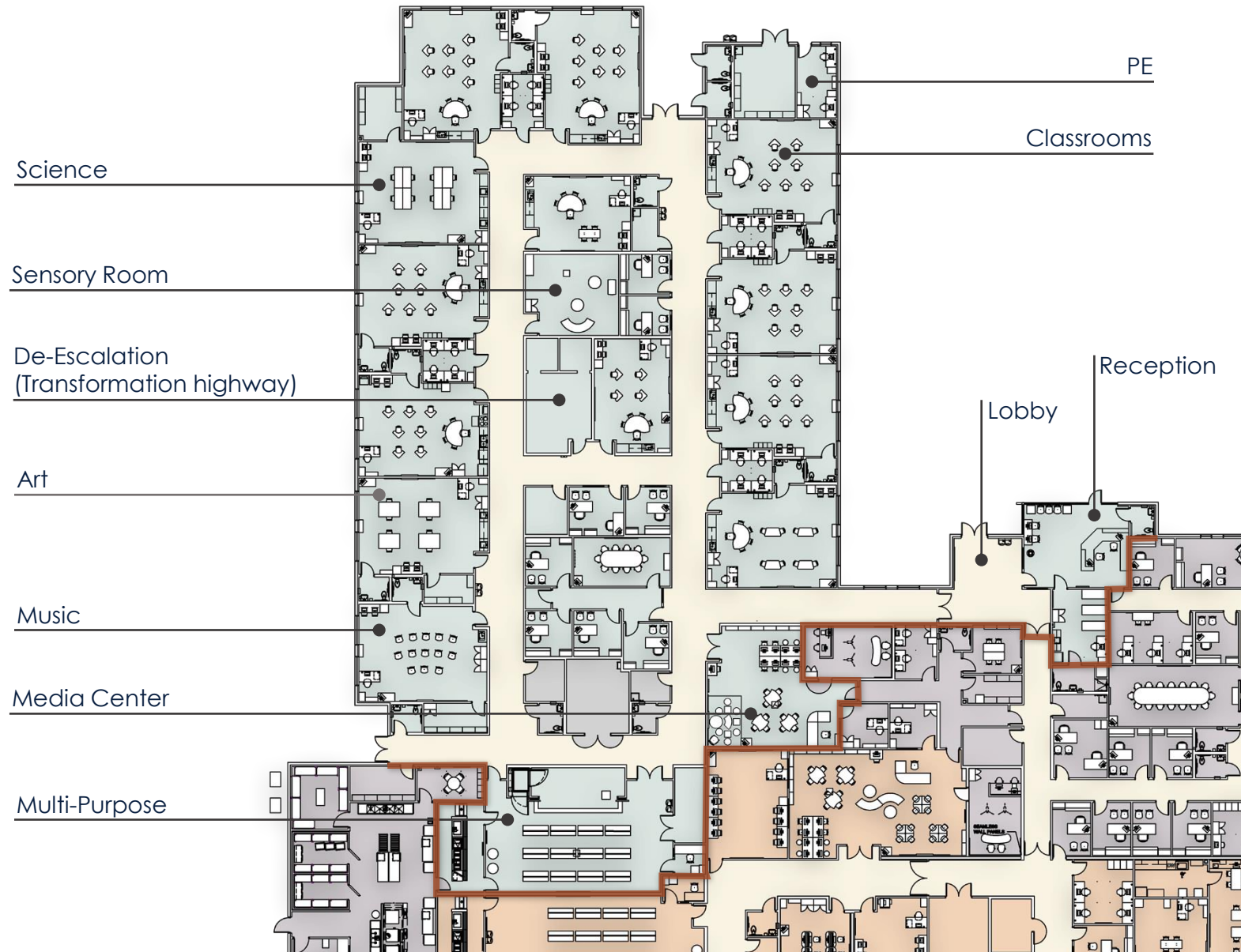
# MAGNOLIA SCHOOL



# LEARNING CENTER

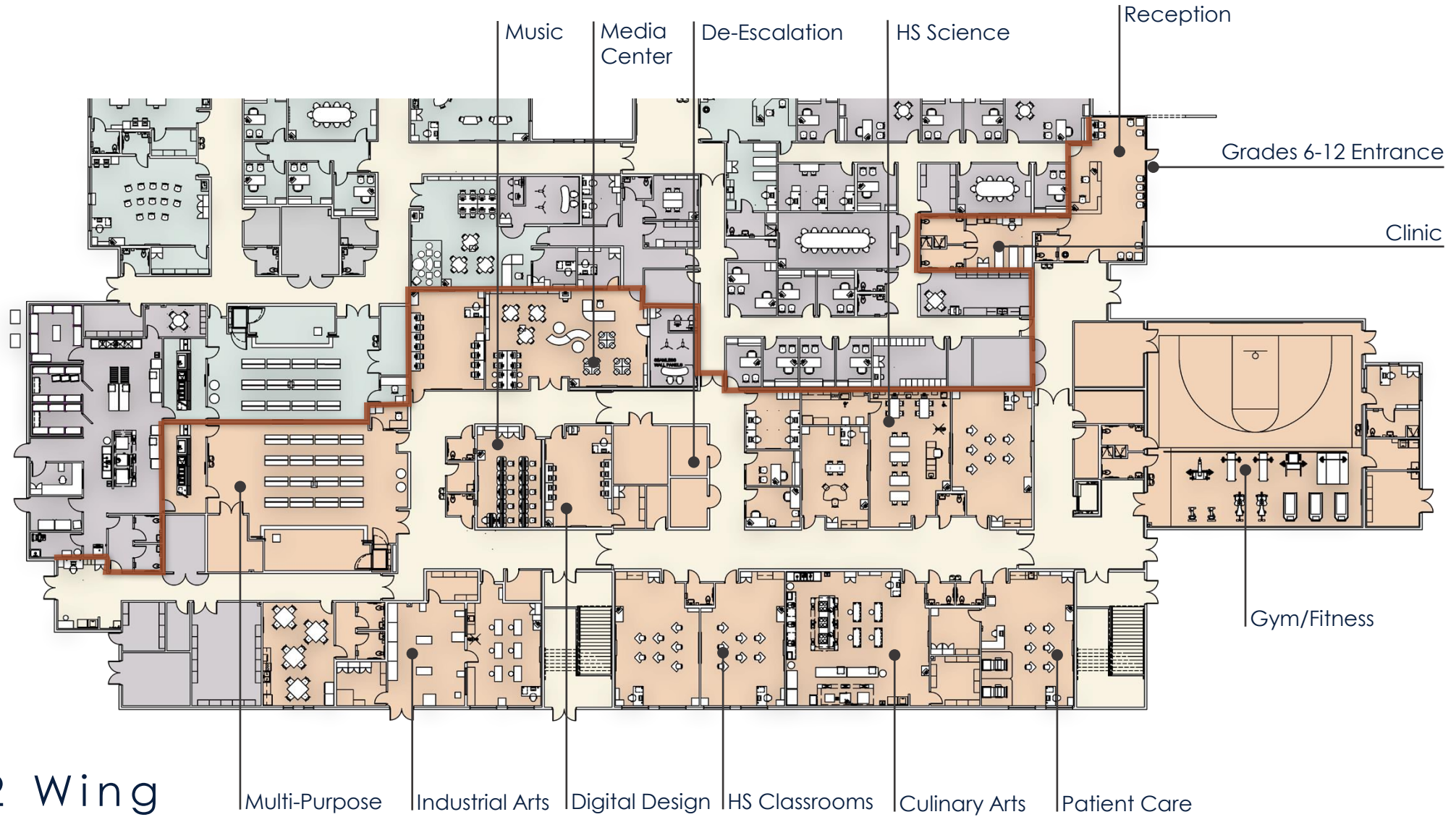


# LEARNING CENTER

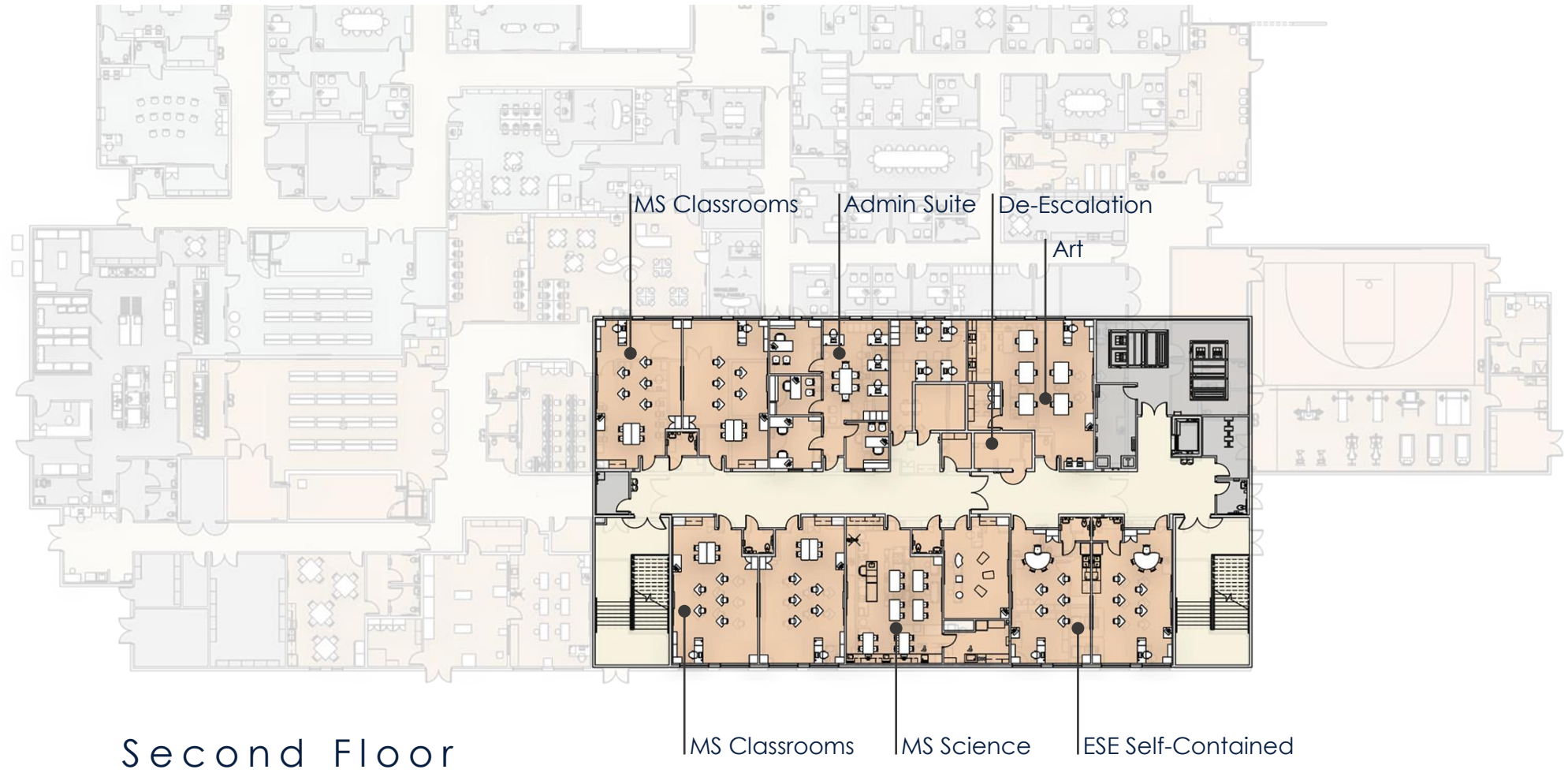


K5 Wing

# LEARNING CENTER



# LEARNING CENTER



Second Floor

# BEHAVIOR CENTER



# QUESTIONS?



Cathie Sullivan, AIA - Senior Facilities Manager Design, OCPS

Leigh Austin, Ed.D. - Director, ESE Specialized Services, OCPS

Jack Williams, AIA - Principal, Harvard Jolly Architecture