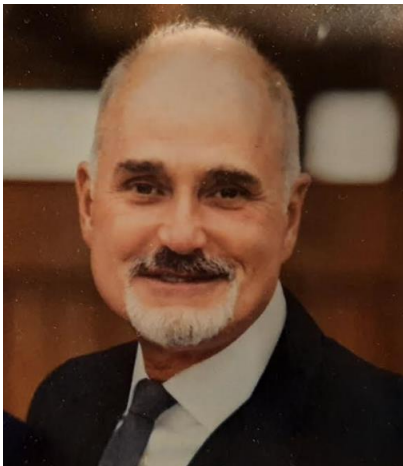


Winter 2021 Conference



# Boundary Realignment

## Clay County District Schools

-Bryce T. Ellis, Assistant Superintendent of Operations

-James F. Fossa, Planning and Governmental Relations Coord.

## Growth and Attendance Boundary Options

### Workshop Focus

- High School: Oakleaf HS (9-12)
- Junior High: Lake Asbury JH (7-8)
- Elementary Schools: Tynes ES, Paterson ES and Lake Asbury ES
- Elementary "R"



## Clay County, NE Florida, South West of Jacksonville



- Clay County growth since 2010: 18.01%
- Annual growth rate past 5 years: 2%
- Average Florida growth rate is 1.7%
- 38,000 Students
- 42 Schools
- One of Florida's fastest growing counties

# Clay County Growth summary

First Coast Expressway completion: 2025

Lake Asbury area:	2,985	} 6,694 homes ≈
Fleming Island/Black Creek:	550	
Oakleaf/Middleburg:	3,159	

1,405 elementary students  
431 middle school students  
892 high school students



## The First Coast Expressway

FCX will have a huge impact on Clay County as the Buchman Bridge had when it opened in 1970.

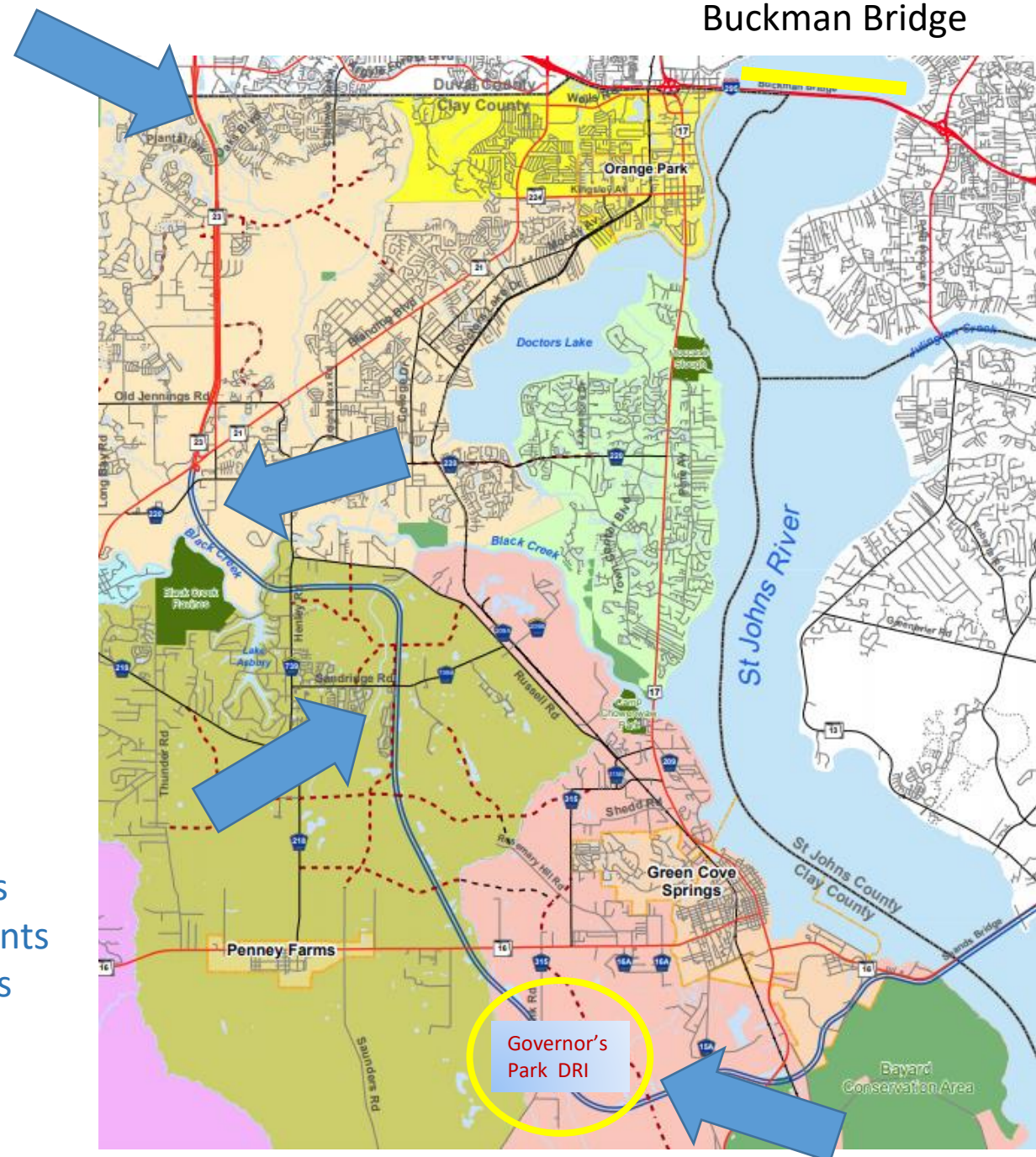
The county grew 109% by 1980.

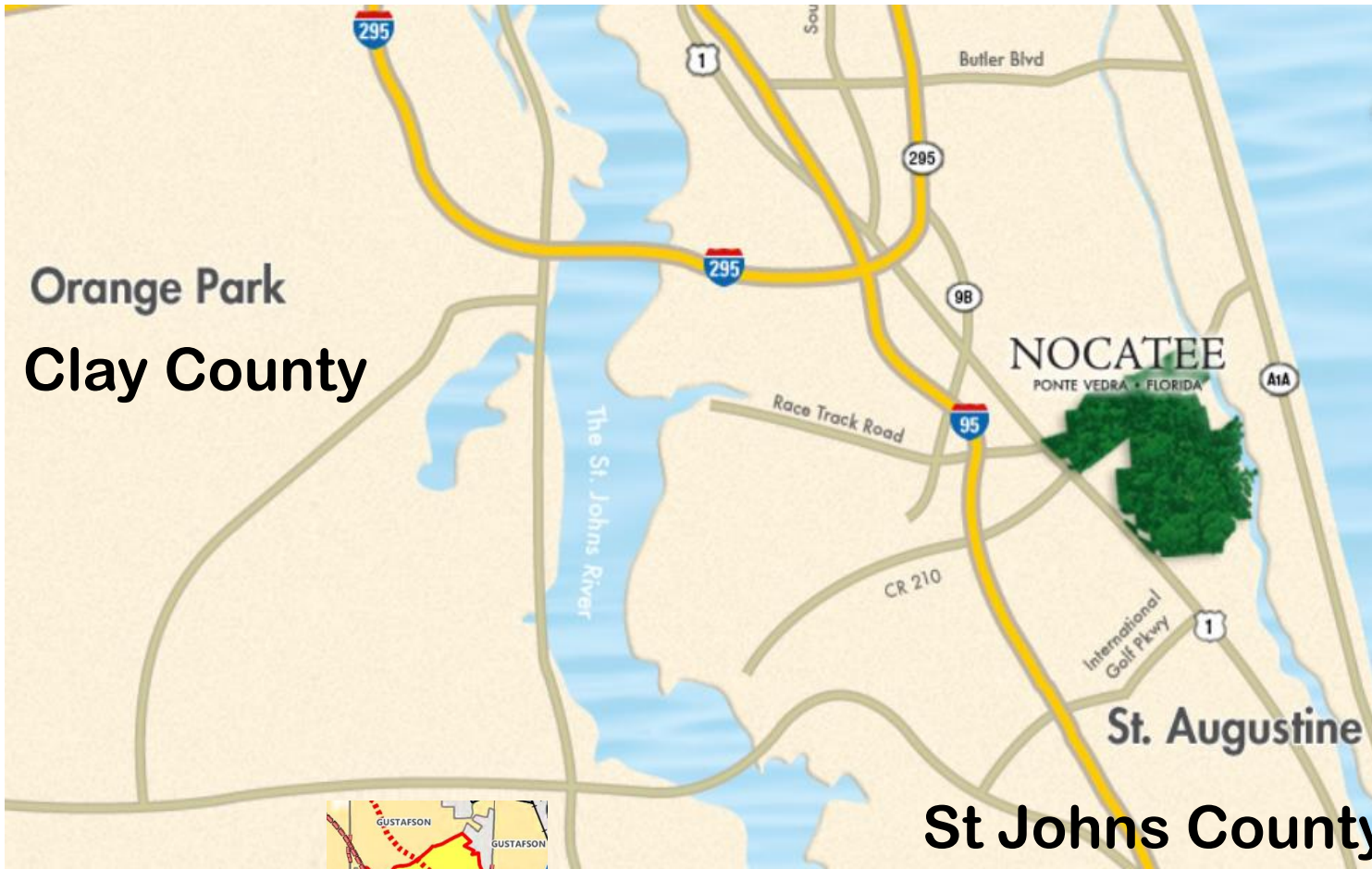
High Growth Areas (FCX)

- Oakleaf
- Middleburg
- Lake Asbury
- Green Cove Springs

Governors Park DRI (6K homes)  
(similar to Nocatee) PARC group

6,294 homes  $\approx$  1,321 elementary students  
405 middle school students  
840 high school students





Orange Park  
Clay County

**NOCATEE**  
PONTE VEDRA • FLORIDA

St Johns County



**Governors Park DRI**

6,294 homes ≈ 1,321 elementary students  
405 middle school students  
840 high school students

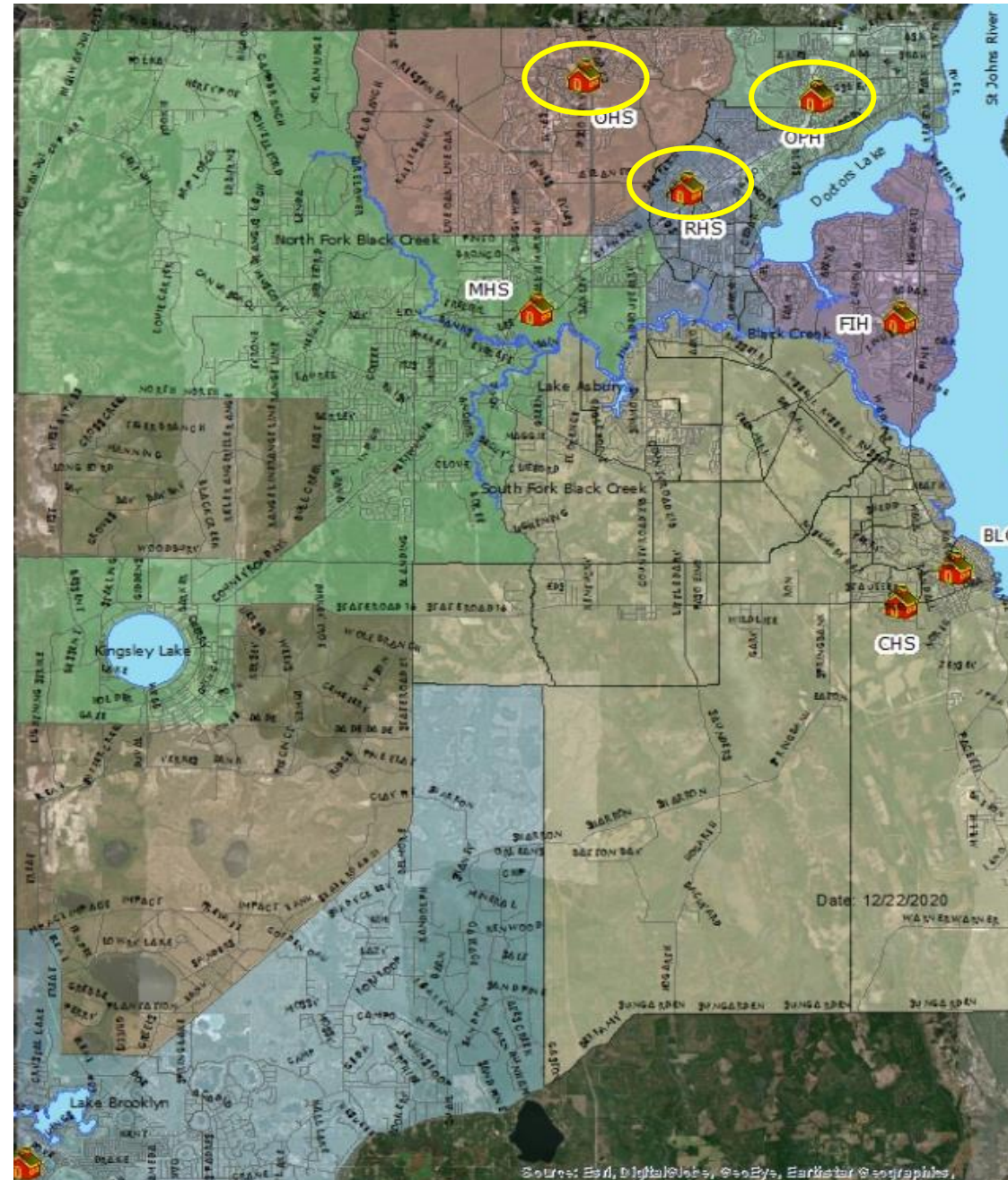
**Nocatee**



# Oakleaf HS Study

High School	Percent Capacity
Clay High	79%
Fleming Island HS	85%
Keystone Sr/Jr	82%
Oakleaf HS	106%
Orange Park HS	65%
Ridgeview HS	67%
Middleburg HS (cafeteria)	98%
	71%

Senior High School Attendance Boundaries (all HS current)



Source: Esri, DigitalGlobe, GeoEye, Earthstar Geographics

# Ridgeview HS Option

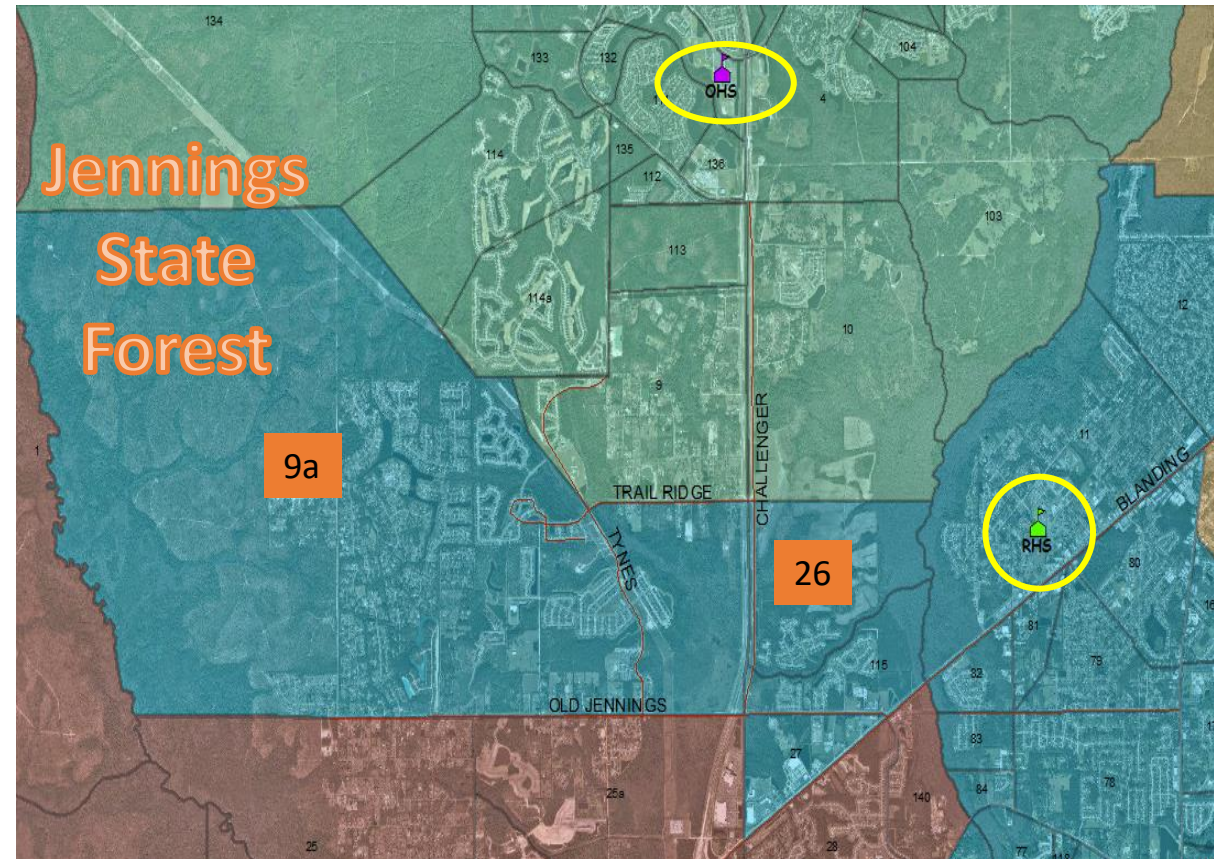
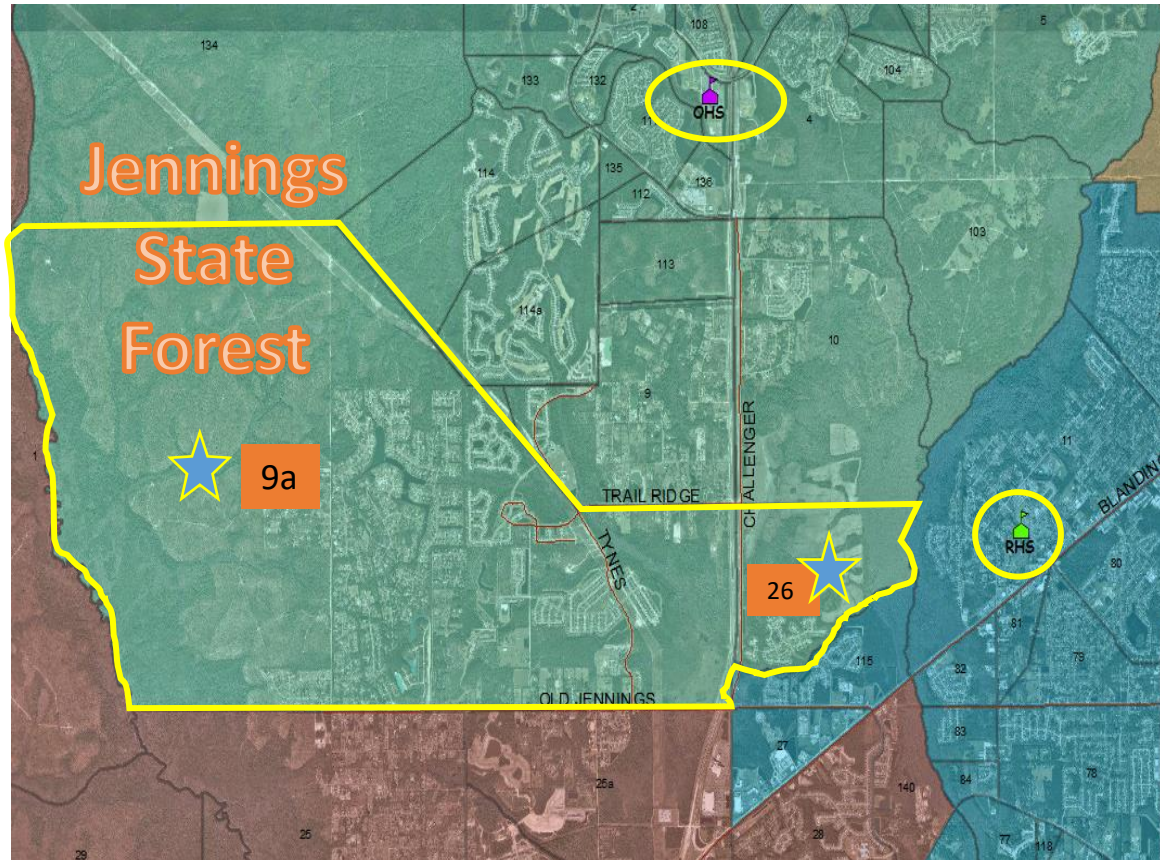
## Attendance Boundary Change for OakLeaf and Ridgeview High Schools (proposed)

Area	Number of students
26	65
9a	297
<b>362</b>	

Areas 9a and 26 to RHS ≈ 360 students  
 OHS: 106% to 92%                      RHS: 67% to 84%

Current Attendance Boundary  
 Areas 9a and 26 go to OHS

Proposed Attendance Boundary  
 Areas 9a and 26 to RHS



*\*note: Students currently transported to OHS (6.2 miles) will also be transported to RHS (5.4 miles)*



# Ridgeview HS Option

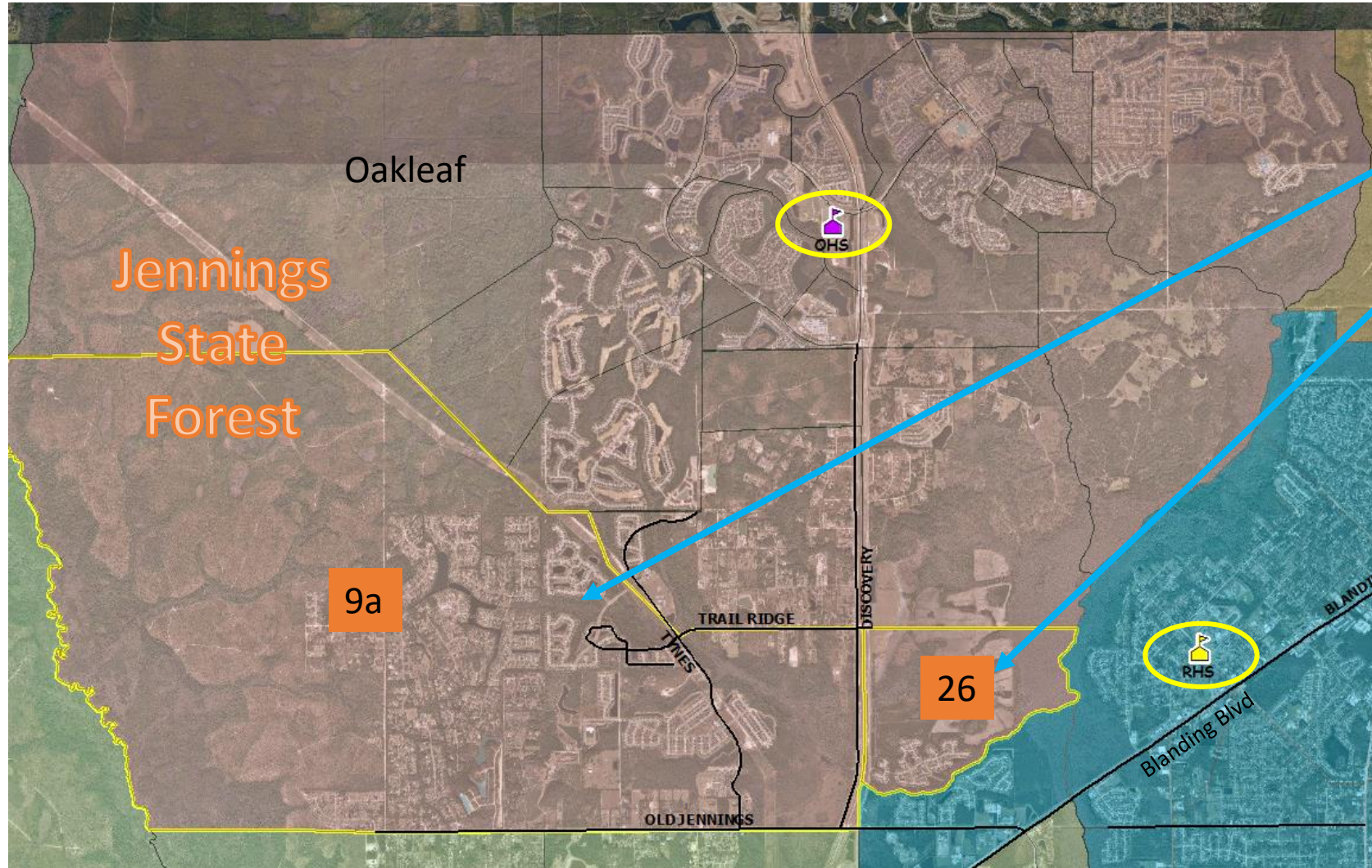
# Attendance Boundary Change for Oakleaf and Ridgeview

## High Schools

Area	Number of students
26	65
9a	297
	<b>362</b>

OHS: 2459 cap / 2607

RHS: 2254 cap / 1522



- ### Neighborhoods to RHS

(Areas 9a and 26)

  - Pine Ridge
  - Two Creeks
  - Fox Meadow
  - Whisper Creek

**Current:** OHS 106 % (Projected growth ≈ 230)  
RHS 67% (730 ≈ available capacity)

**Status Quo:** OHS 115 % (growing)  
RHS 67%

**Remedy:** Areas:  
9a and 26 to RHS ≈ 360 students

**Result:** OHS 92% (allows for growth)  
RHS 84%

*\*note: Students currently transported to OHS (6.2 miles) will also be transported to RHS (5.4 miles)*

# Orange Park HS Option

Area	Number of students
5	459

## Attendance Boundary Change for Oakleaf HS and Orange Park HS

OHS: 2459 cap / 2607

OPH: 2343 cap / 1534

**Current:** OHS 106% (Projected growth  $\approx$  230)

OPH 65% (809  $\approx$  available capacity)

**Remedy:** Area 5 to OPH  $\approx$  459 students

**Status Quo:** OHS 115% (growing)

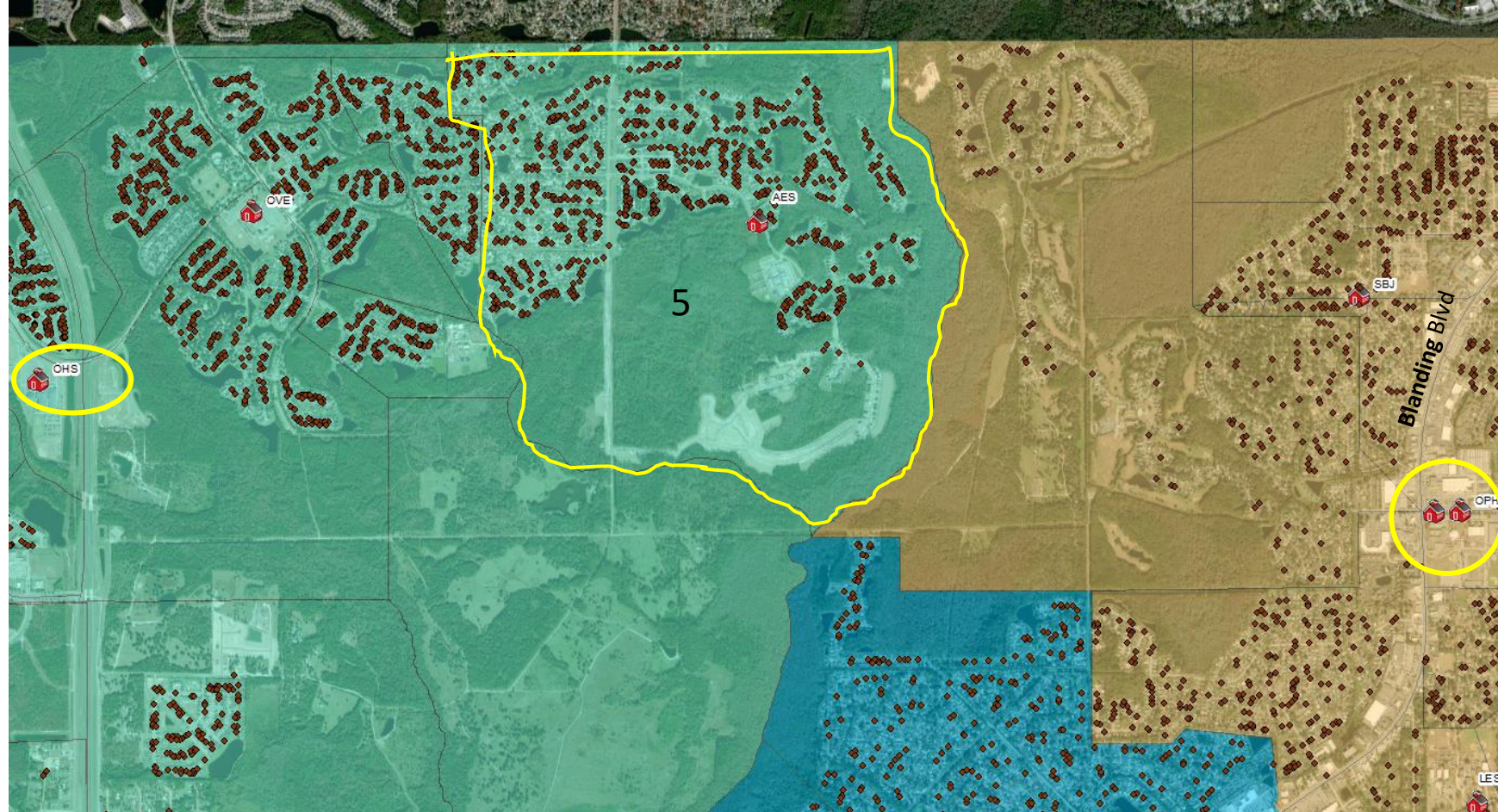
OPH 65%

**Result:** OHS 87% (*allows for growth*)

OPH 85%

### Nearby Neighborhoods to OPH:

- Olde Sutton
- Spencer
- Holly Parke
- Cranes Landing
- Hammock Grove
- Brittany Bluff
- Water Mill
- Plantation Village



*\*note: Students currently transported to OHS (5.2 miles) will also be transported to OPH (6.2 miles)*

# Orange Park HS Option

Area	Number of students
5	459

## Attendance Boundary Change for Oakleaf HS and Orange Park HS

**Current:** OHS 106% (Projected growth  $\approx$  230)  
OPH 65% (809  $\approx$  available capacity)

**Remedy:** Area 5 to OPH  $\approx$  459 students

**Status Quo:** OHS 115% (growing)  
OPH 65%

**Result:** OHS 87%  
OPH 85%

### Neighborhoods to OPH:

- Olde Sutton
- Spencer
- Holly Parke
- Cranes Landing
- Hammock Grove
- Brittany Bluff
- Water Mill
- Plantation Village



*\*note: Students currently transported to OHS (5.2 miles)  
will also be transported to OPH (6.2 miles)*

# Attendance Boundary Change for Oakleaf HS, Ridgeview HS and Orange Park HS

Both Option

OHS: 2459 cap / 1894 (77%)

RHS: 2254 cap / 1882 (84%)

OPH: 2343 cap / 1993 (85%)

Area	Number of students
26	65
9a	297
Area	Number of students
5	459

821

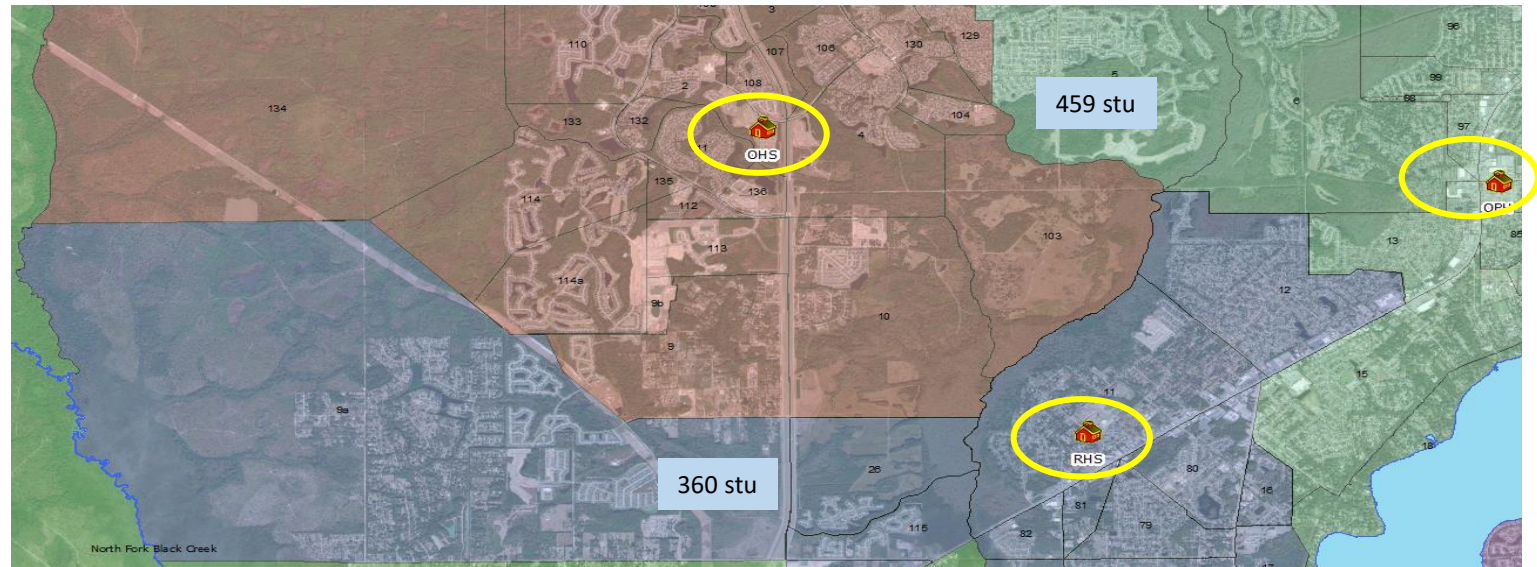
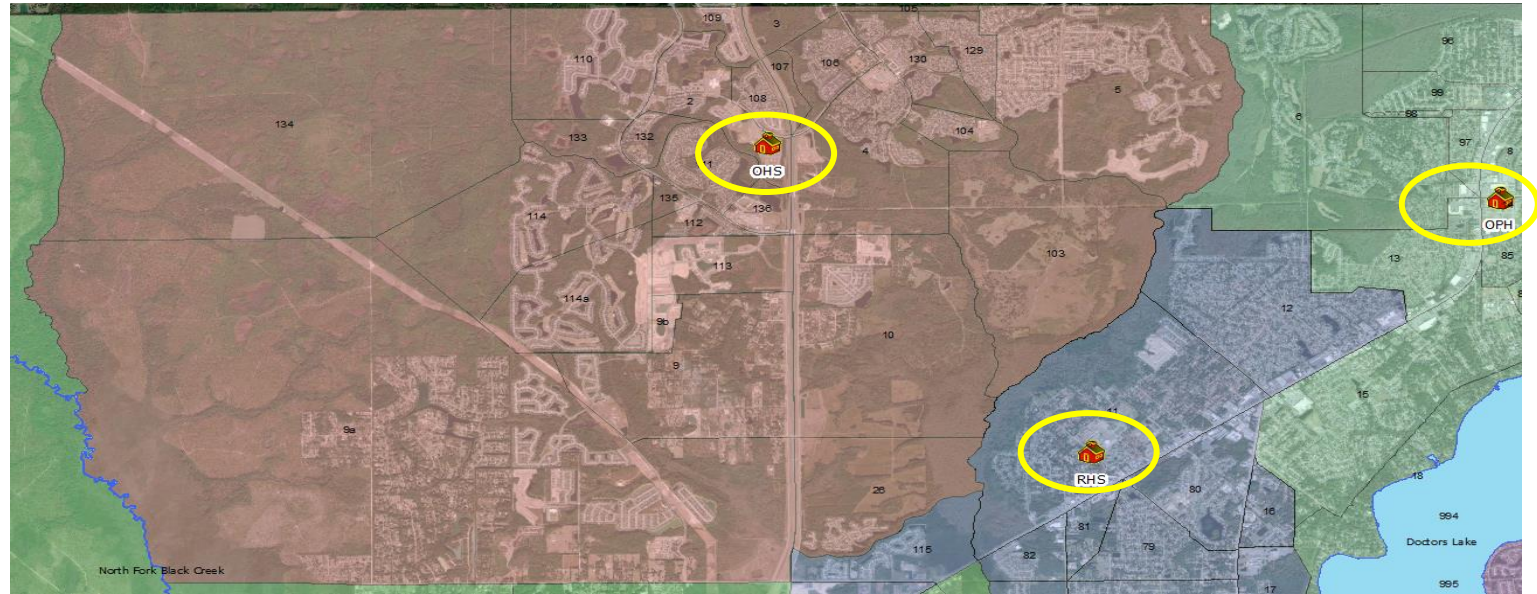
**Current:** OHS 106% (Projected growth  $\approx$  230)  
 OPH 65% (809  $\approx$  available capacity)  
 RHS 67% (730  $\approx$  available capacity)

**Remedy:** Area 5 to OPH  $\approx$  459 students  
 9a and 26 to RHS  $\approx$  360 students

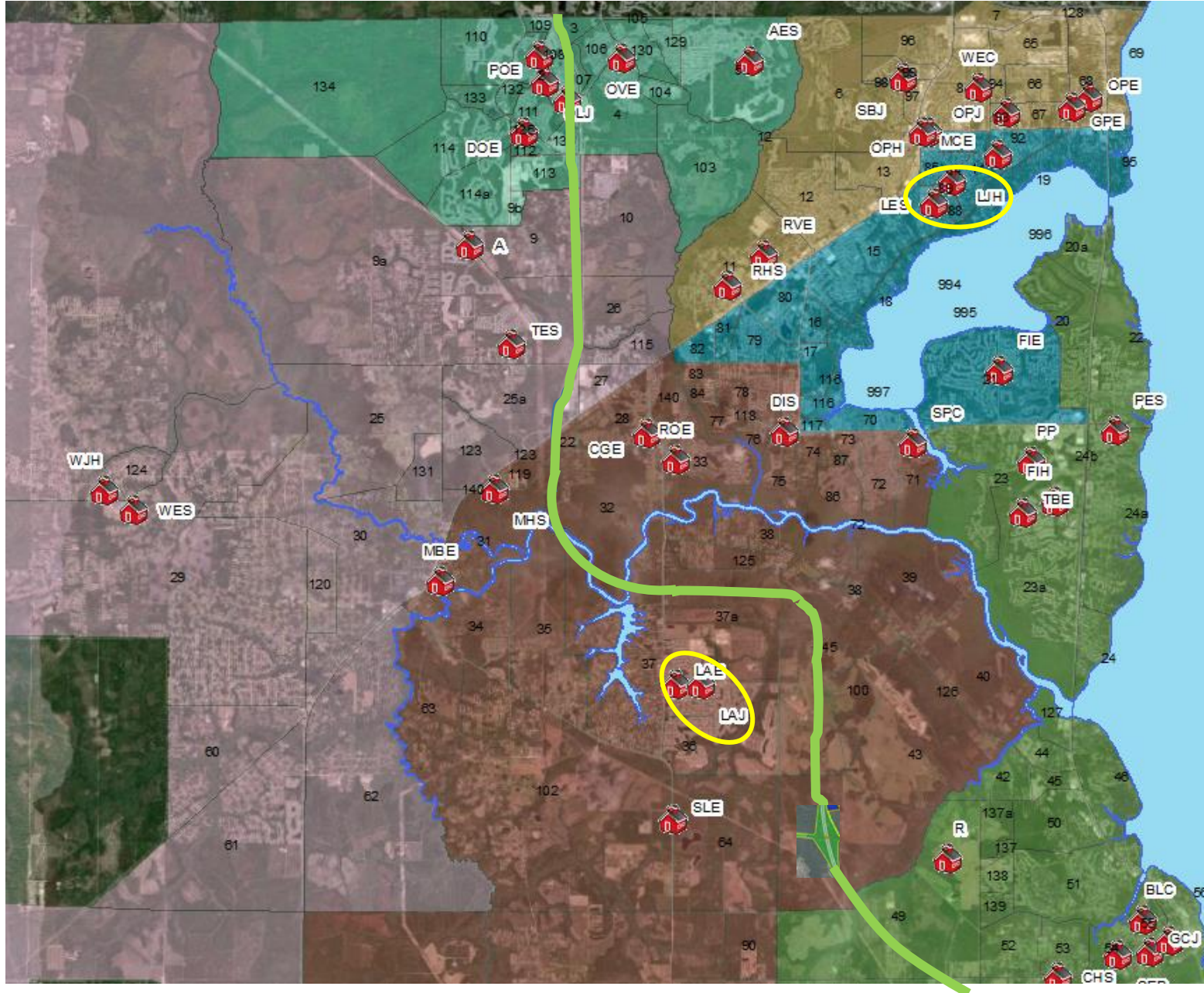
**Status Quo:** OHS 115% (growing)  
 OPH 65%  
 RHS 67%

**Result:** OHS 77% (*Allows for growth*)  
 OPH 85%  
 RHS 84%

BALANCE



# Junior High School Attendance Boundaries (current)



School	Percent Capacity
Green Cove Spgs JH	90%
Lake Asbury JH	83% (ESE factor 88%)
Lakeside JH	70%
Oakleaf JH	80%
Orange Park JH	70%
Wilkinson JH	97%

# Attendance Boundary for

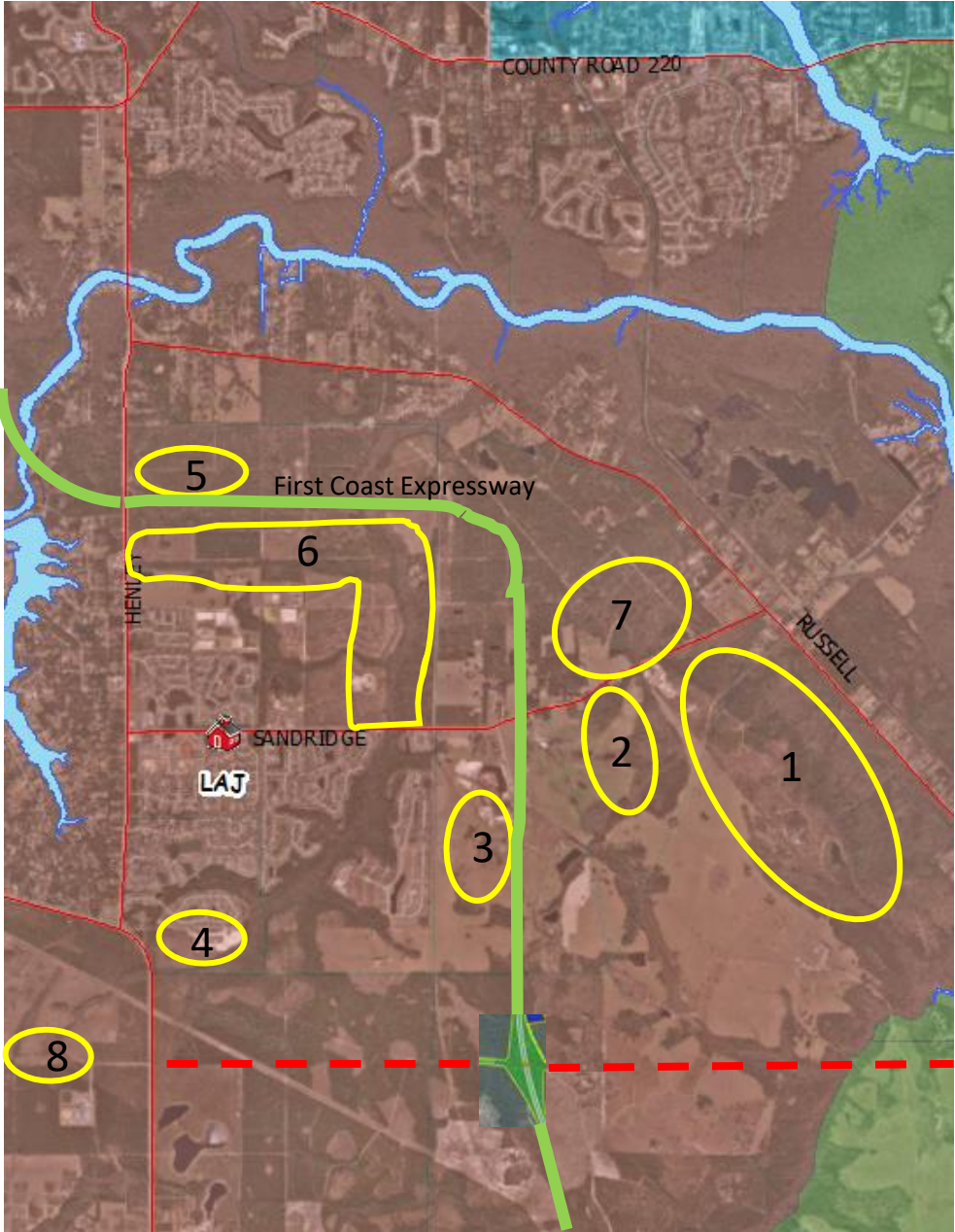
## Lake Asbury JH

LAJ: 1334 cap

Attend: 1107

**Current:** LAJ 83% (Projected growth  $\approx$  360) ESE factor: LAJ 88%

**Status Quo:** LAJ 113% (Growing) ESE factor: LAJ 117%

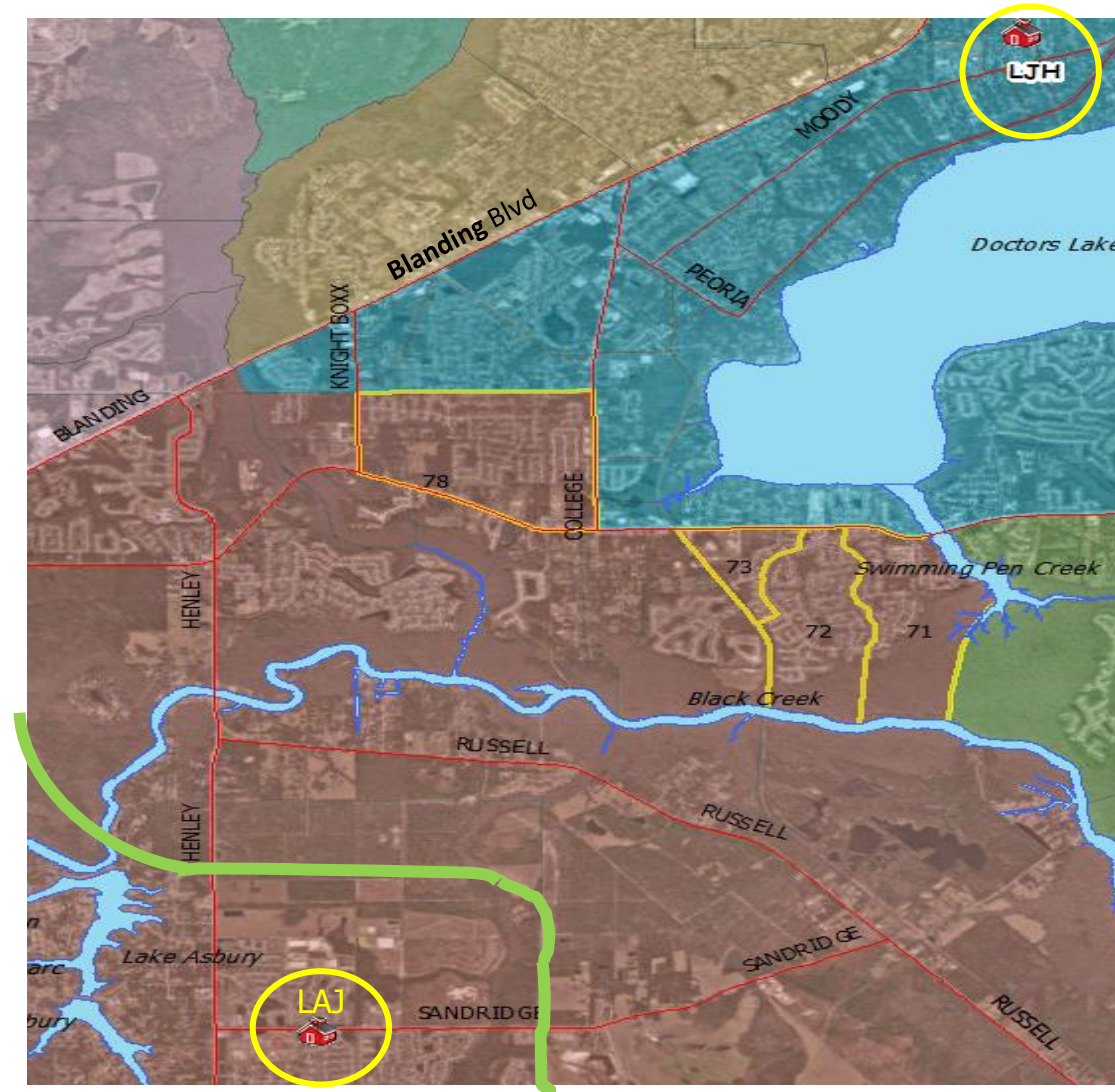


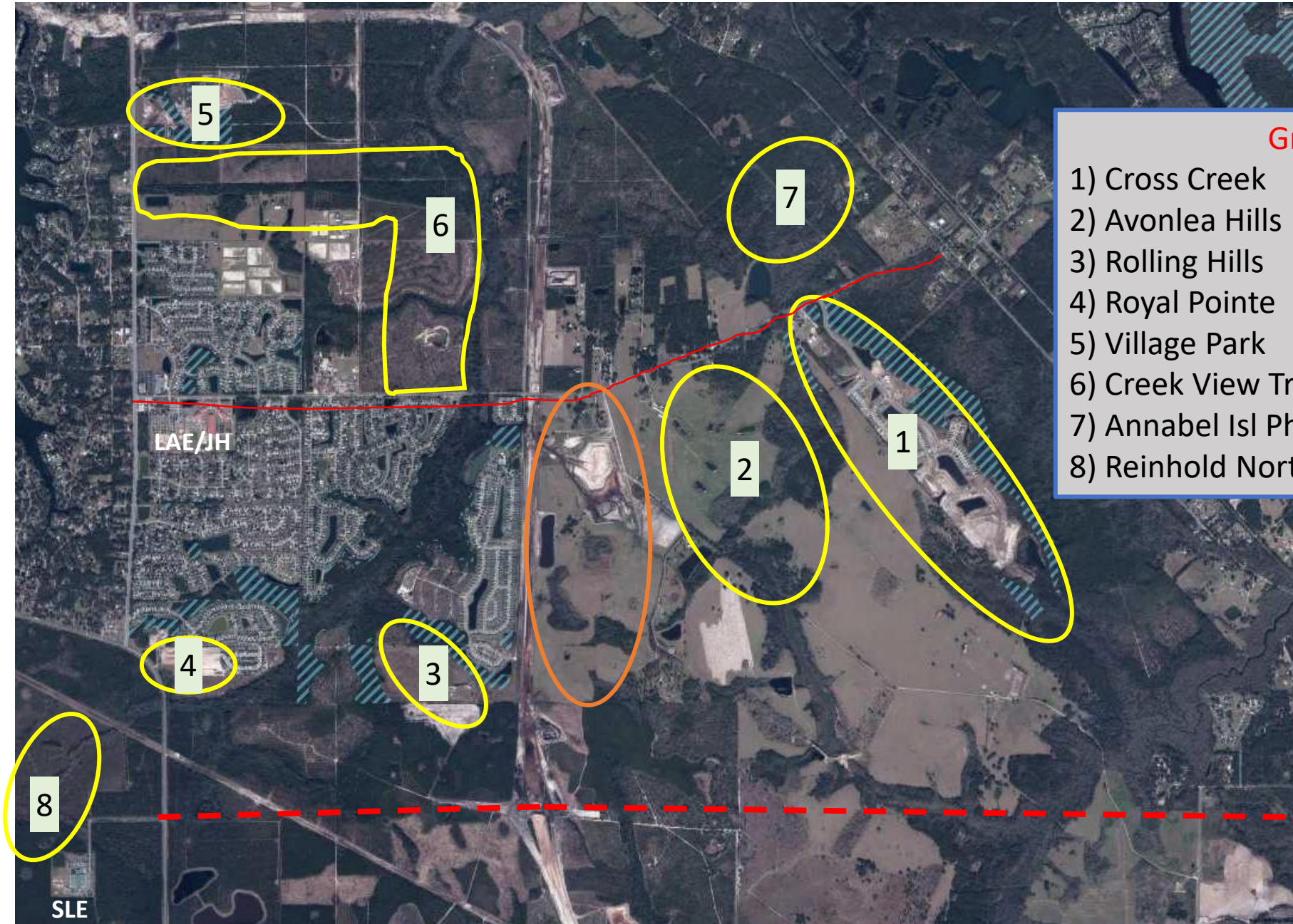
### Growth (LAJ)

1) Cross Creek	(1300)	7 years
2) Avonlea Hills	(774)	4 years
3) Rolling Hills	(139)	2 years
4) Royal Pointe	(62)	1 year
5) Village Park	(300)	2 years
6) Creek View Trail	(1820)	8 years
7) Annabel Isl Phase 1	(245)	3 years
8) Reinhold North	(725)	5 years

# Attendance Boundary Lake Asbury JH (7- 8)

## Current Area





**Growth (LAJ)**

1) Cross Creek	(1300)	7 years
2) Avonlea Hills	(774)	4 years
3) Rolling Hills	(139)	2 years
4) Royal Pointe	(62)	1 year
5) Village Park	(300)	2 years
6) Creek View Trail	(1820)	8 years
7) Annabel Isl Phase 1	(245)	3 years
8) Reinhold North	(725)	5 years



# Attendance Boundary Change for Lake Asbury and Lakeside Junior High Schools

LAJ: 1334 cap

LJH: 1204 cap

Area	Number of students
71	21
72	48
73	28
78, 83, 84	91

188

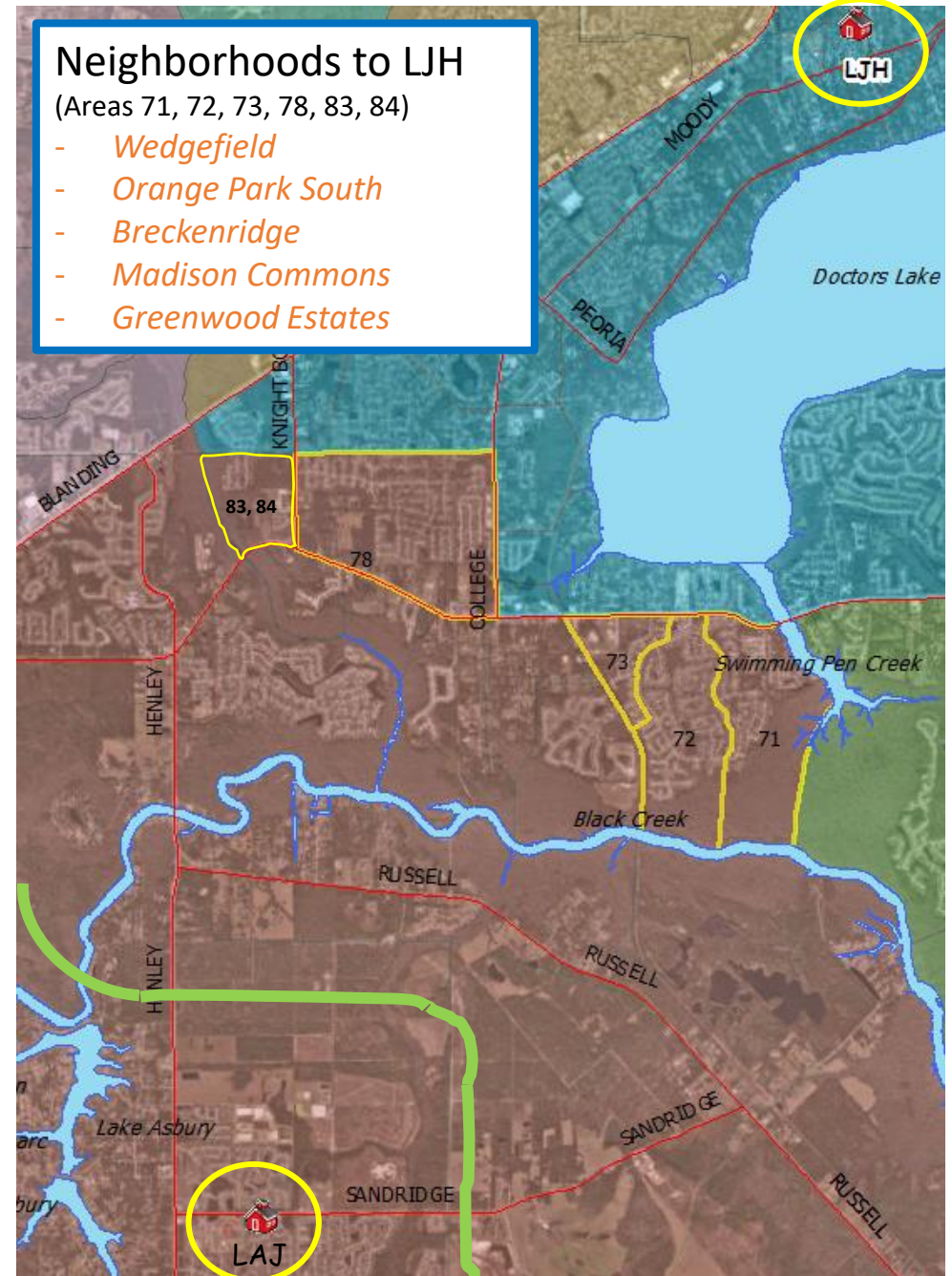
**Current:** LAJ 73% (Projected growth  $\approx$  360)  
LJH 64% (400  $\approx$  available capacity)

**Status Quo:** LAJ 113% (Growing) ESE factor: 117%  
LJH 64%

**Remedy:** Areas 71, 72, 73, 78, 83 and 84  $\approx$  190 students to LJH

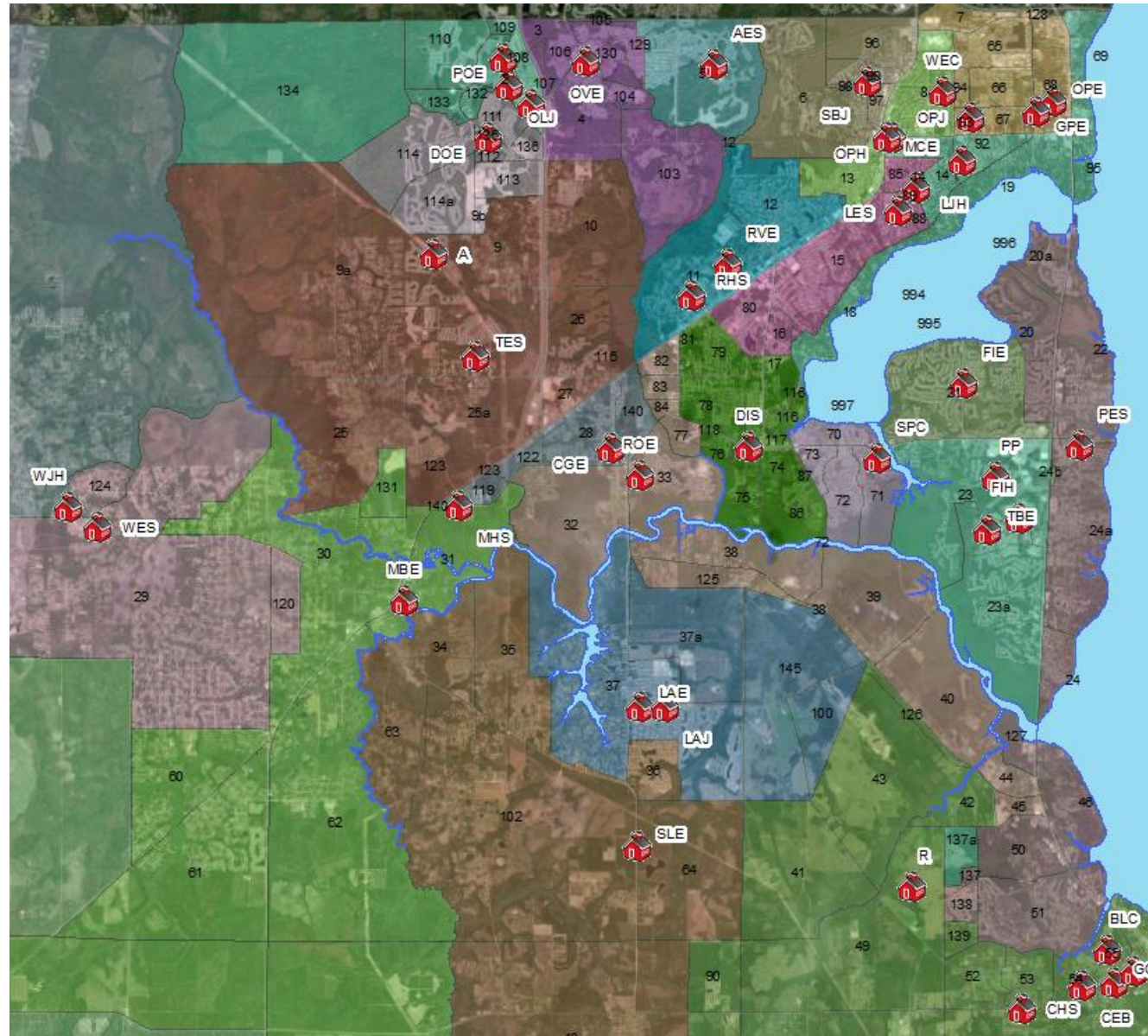
**Result:** LAJ 64% ESE factor: 75% (allows for growth)  
LJH 80%

*\*note: Students currently transported to LAJ (7.62 miles) will also be transported to LJH (5.32 miles)*



## Elementary School Attendance Boundaries (current)

Elementary School	Percent Capacity
Paterson	104%
Tynes	104%
Coppergate	74%
Fleming Island	81%
C.E. Bennett (Cafeteria)	80%
Lake Asbury	91%
Thunderbolt	79%
Rideout	76%
Discovery Oaks	100%



# Attendance Boundary and Growth

## Paterson ES

PES: 1105 cap Attend: 1146

**Current:** PES 104% (Projected growth  $\approx$  200)

**Status Quo:** PES 121%

### Growth (PES)

Black Creek Village	1 year
Fleming Estates	2 years
Magnolia West ph III and IV	3 years
The Reserve	2 years
Willow Springs	3 year
Luten Landing	1 year



# Attendance Boundary and Growth Paterson Elementary School

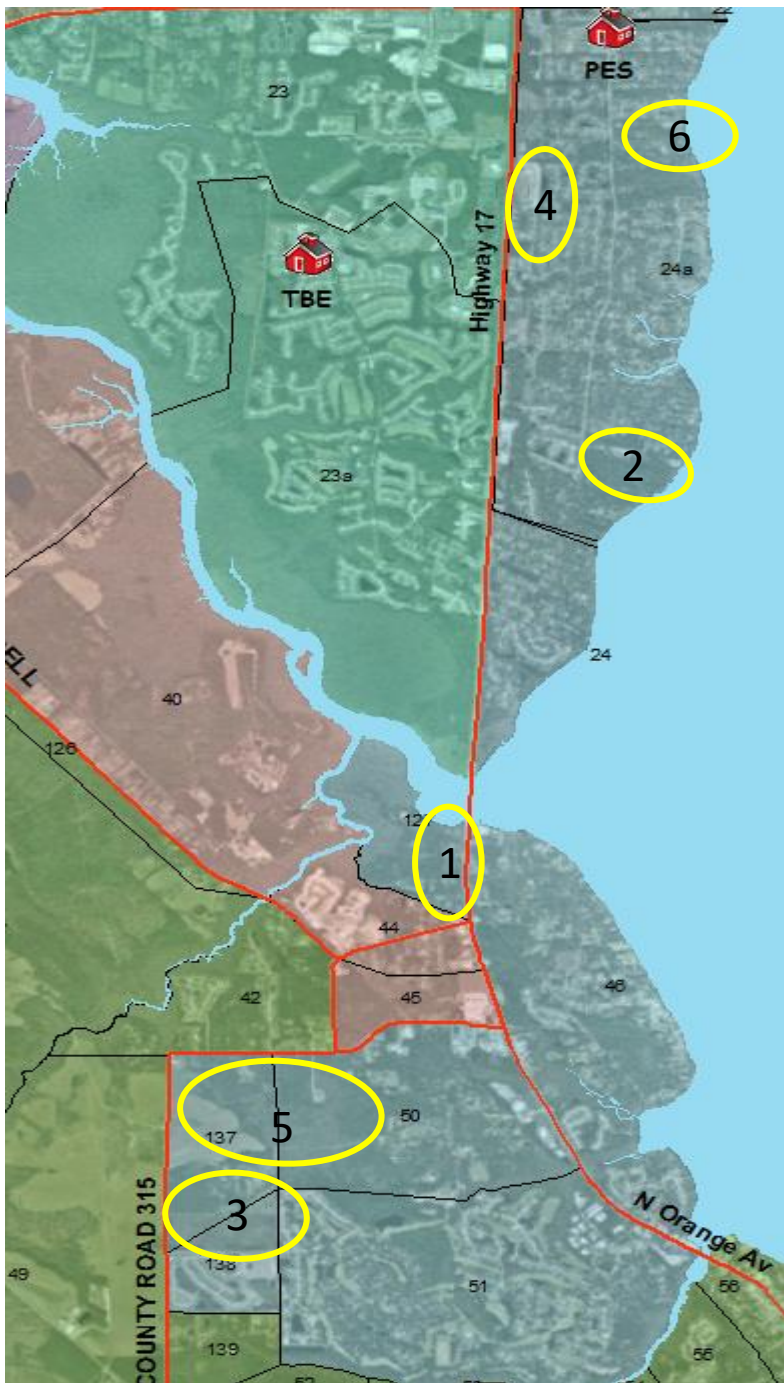
PES: 1105 cap

**Current:** PES 104% (Projected growth  $\approx$  200)

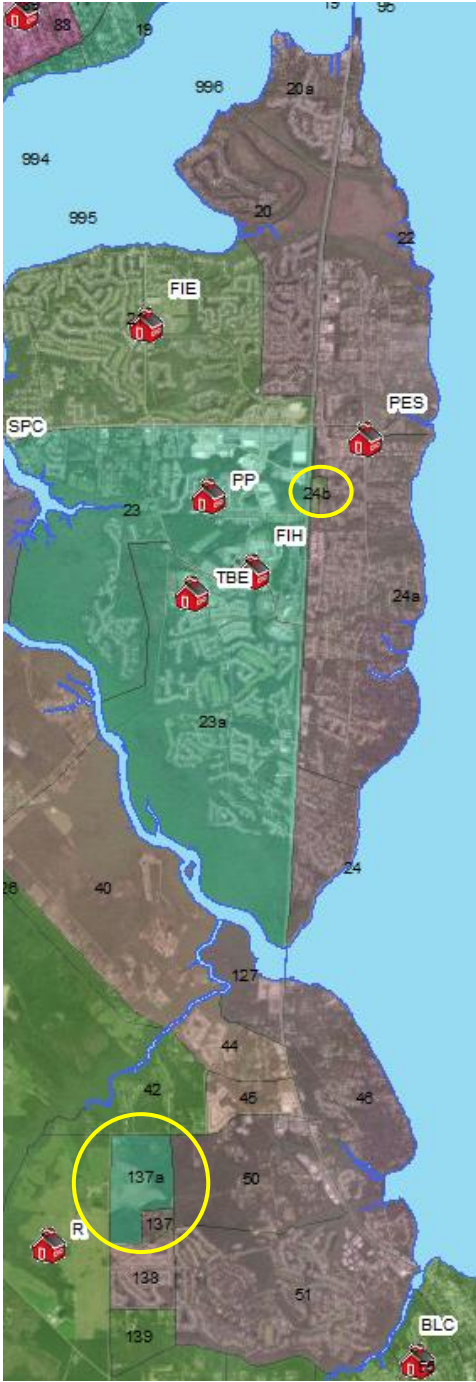
**Status Quo:** PES 121%

## Growth (PES)

- |                                     |           |
|-------------------------------------|-----------|
| 1) Black Creek Village – 17         | (1 year)  |
| 2) Fleming Estates – 10             | (2 years) |
| 3) Magnolia West ph III and IV – 60 | (3 years) |
| 4) The Reserve – 37                 | (2 years) |
| 5) Willow Spgs – 85                 | (4 years) |
| 6) Luten Landing- 3                 | (1 year)  |



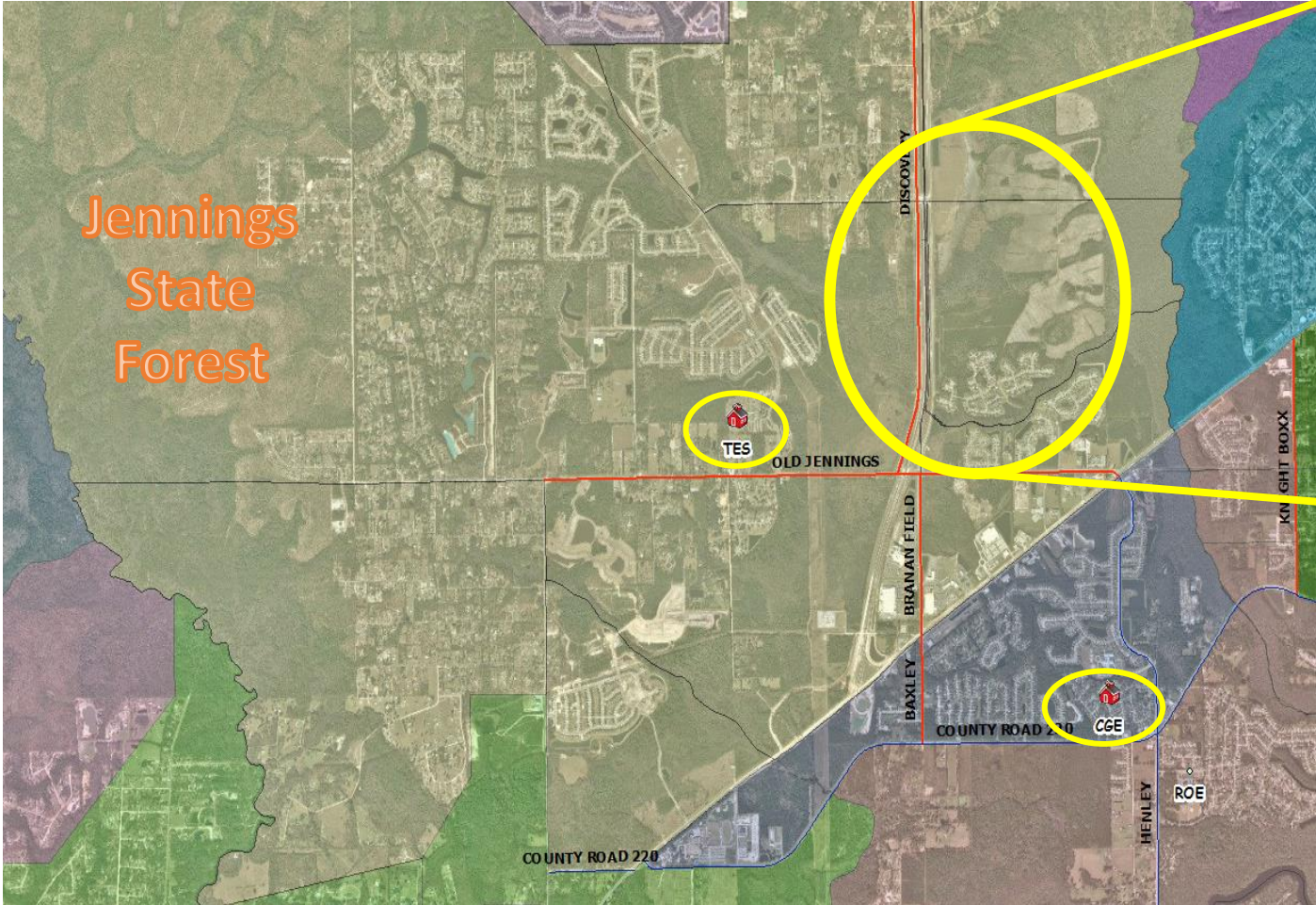
# Attendance Boundary for Paterson ES



Partner School Program

# Attendance Boundary Tynes ES

TES: 1004 capacity, 104%



- Area east of the First Coast Expressway
- North of Old Jennings
- South of Trail Ridge Rd.

# Attendance Boundary Change for Tynes and Coppergate Elementary Schools

Area	Number of students
26	65
115	87
27	0 (under development)
	<b>152</b>

TES: 1004 cap

CGE: 725 cap

**Current:** TES 104% (Projected growth ≈ 158)  
CGE 74% (180 ≈ available capacity)

**Status Quo:** TES 120%  
CGE 74%

**Remedy:** Areas 26, 27 and 115 to CGE  
≈ 150 students

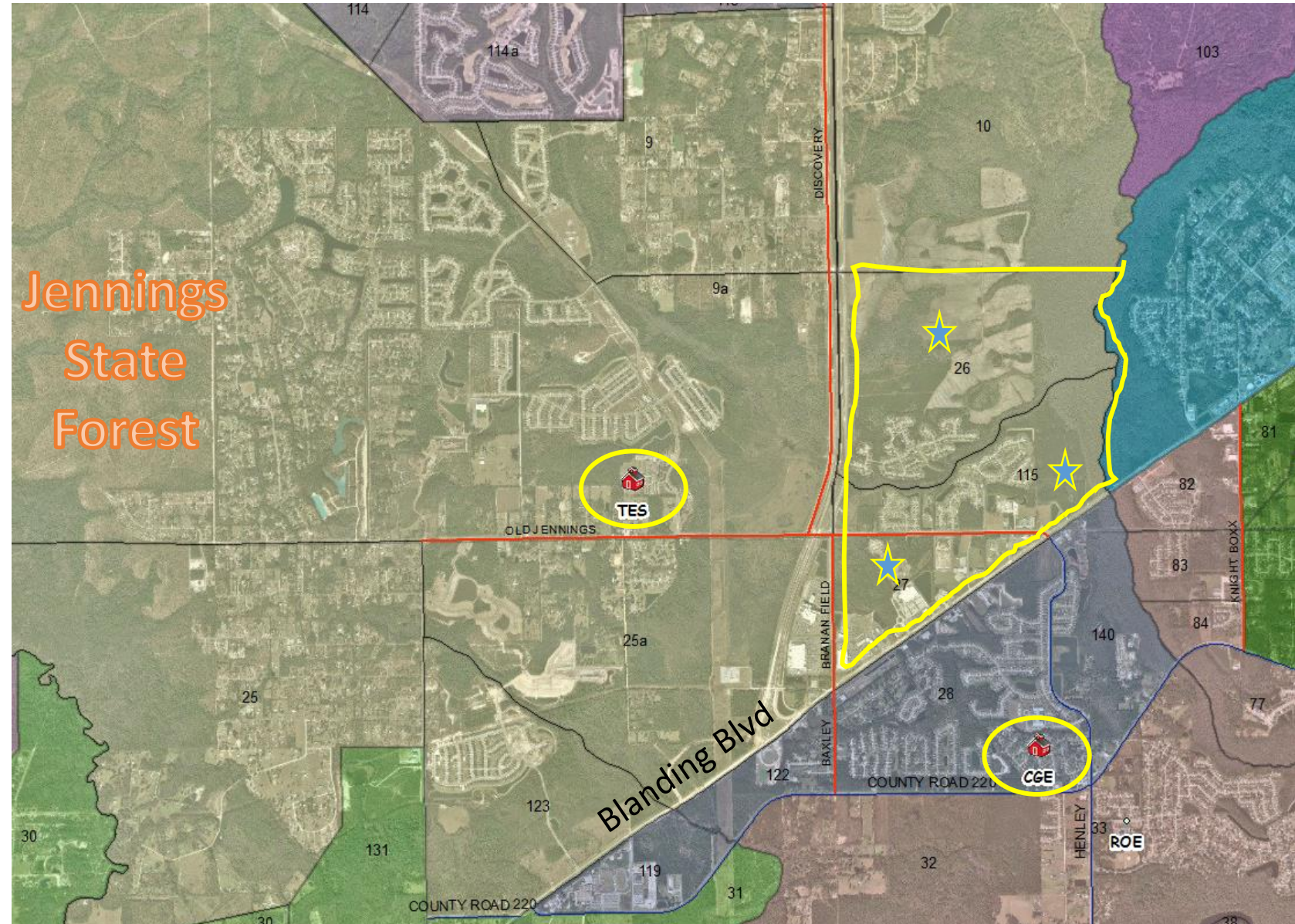
**Result:** TES 85% (allows for growth)  
CGE 92%

## Neighborhoods to GCE

(Areas 26, 27, 115)

- Summer Brook
- Branan Mill Plantation
- Whisper Creek

\*note: Students currently transported to TES (2.5 miles)  
will also be transported to CGE (3.1 miles)



# Attendance Boundary Tynes and Coppergate Elementary Schools

TES: 1004 cap

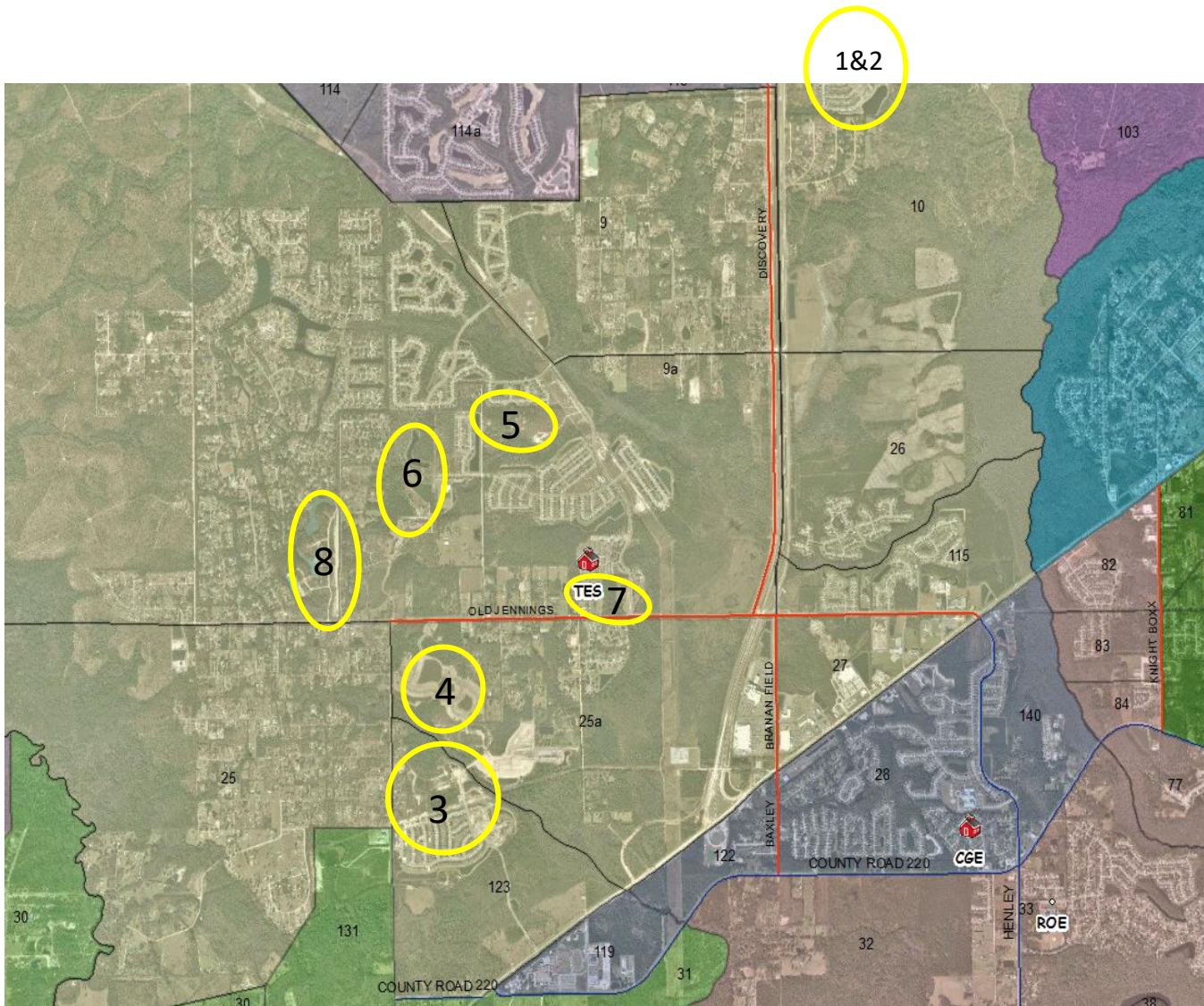
CGE: 725 cap

**Current:** TES 104% (Projected growth ≈ 158)  
CGE 74% (180 ≈ available capacity)

**Status Quo:** TES 120%  
CGE 74%

**Remedy:** Areas 26, 27 and 115 to CGE  
≈ 150 students

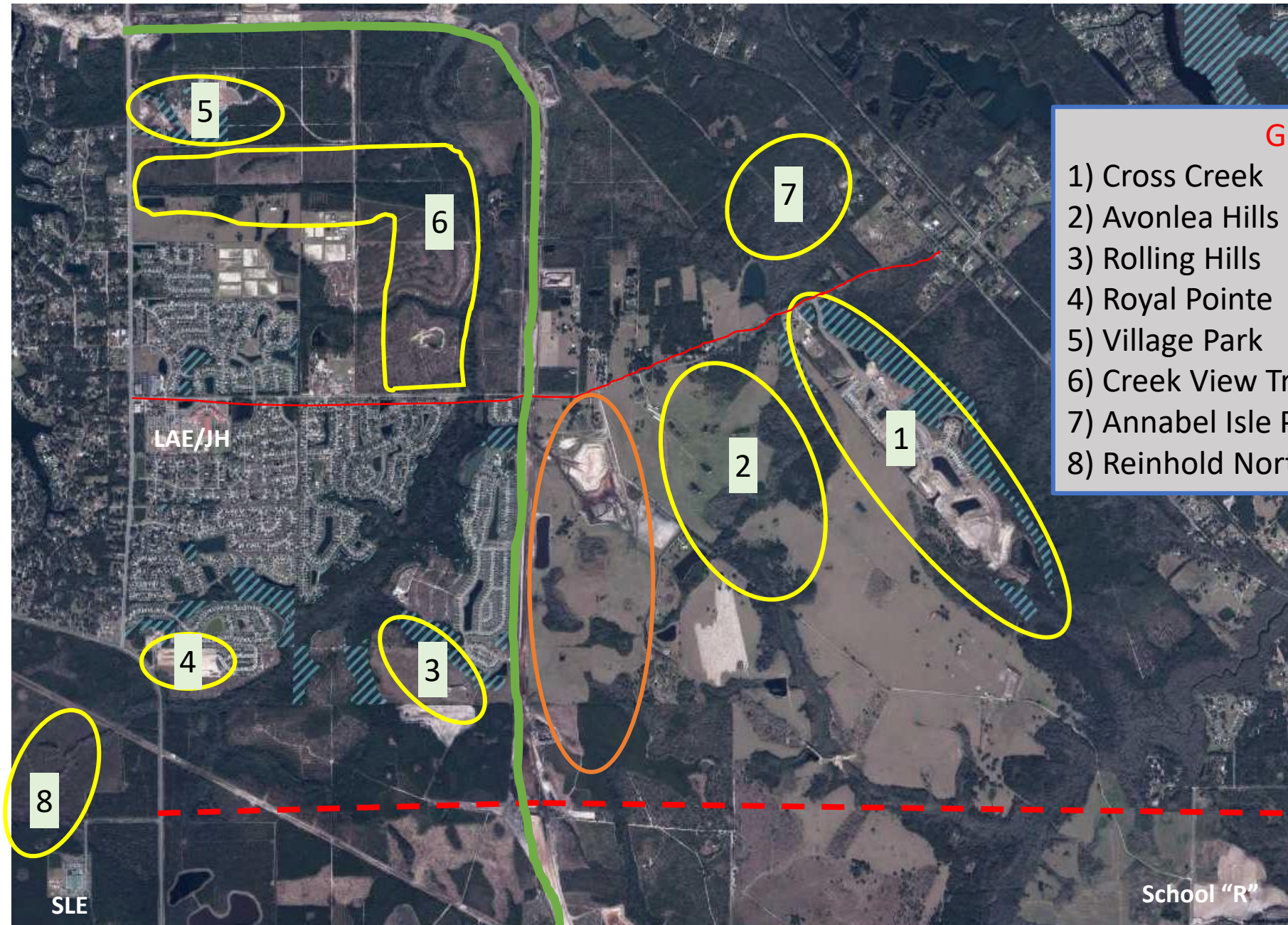
**Result:** TES 85% (*allows for growth*)  
CGE 92%



## Growth (TES)

- 1) Cameron Oaks
- 2) Kindlewood
- 3) Azalea Ridge
- 4) Linda Lakes
- 5) Pine Ridge
- 6) Pine Ridge West
- 7) Apartments (unnamed)
- 8) Fox meadow unit 8A

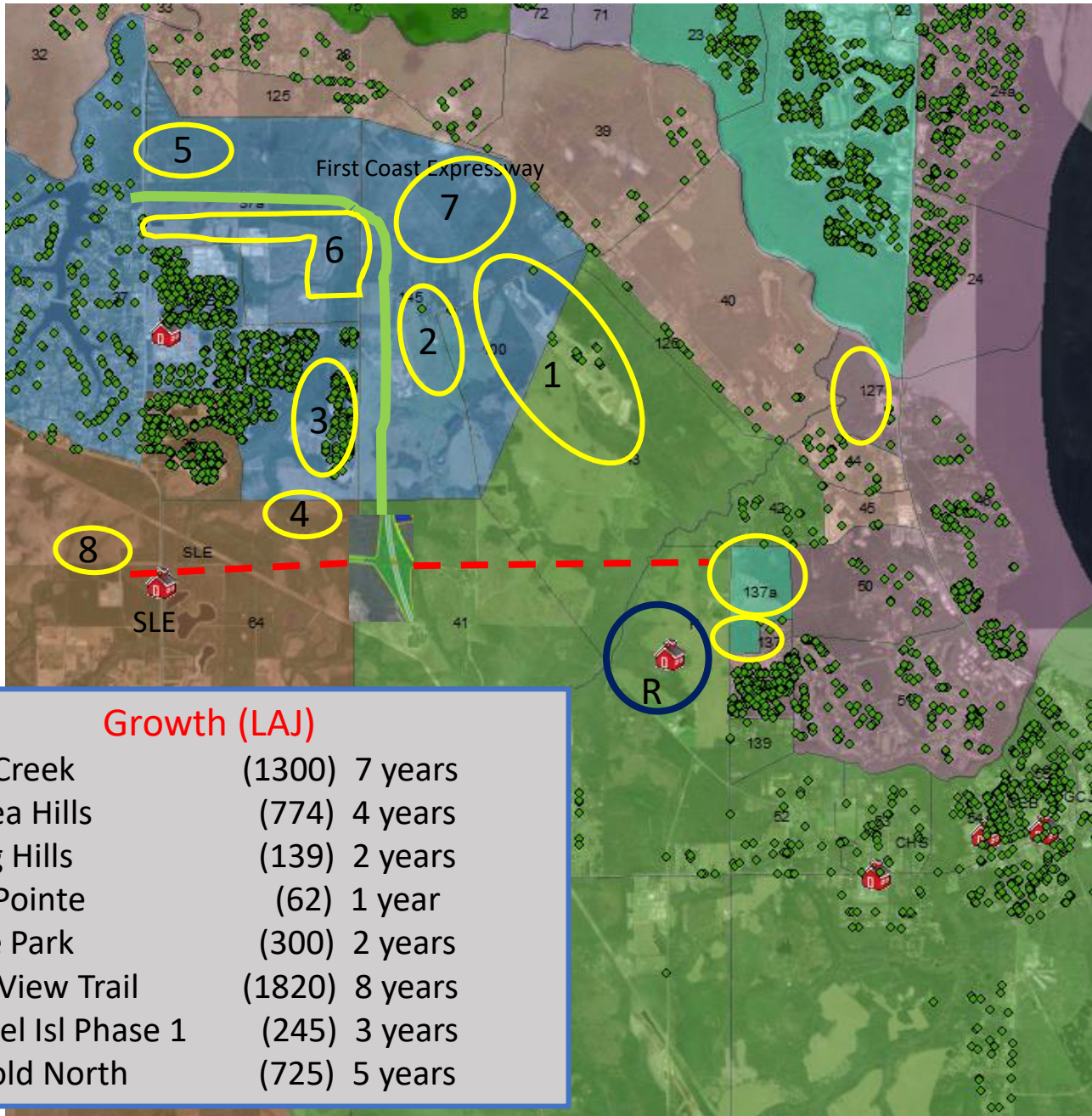




**Growth (LAJ)**

1) Cross Creek	(1300)	7 years
2) Avonlea Hills	(774)	4 years
3) Rolling Hills	(139)	2 years
4) Royal Pointe	(62)	1 year
5) Village Park	(300)	2 years
6) Creek View Trail	(1820)	8 years
7) Annabel Isle Phase 1	(245)	3 years
8) Reinhold North	(725)	5 years

# School "R" PK - 6, capacity 862



School	Capacity	Attendance	% Capacity
School "R"	862	N/A	N/A
PES	1105	1146	103.7%
ROE	679	518	76%
LAE	970	881	90.8%

## Growth (LAJ)

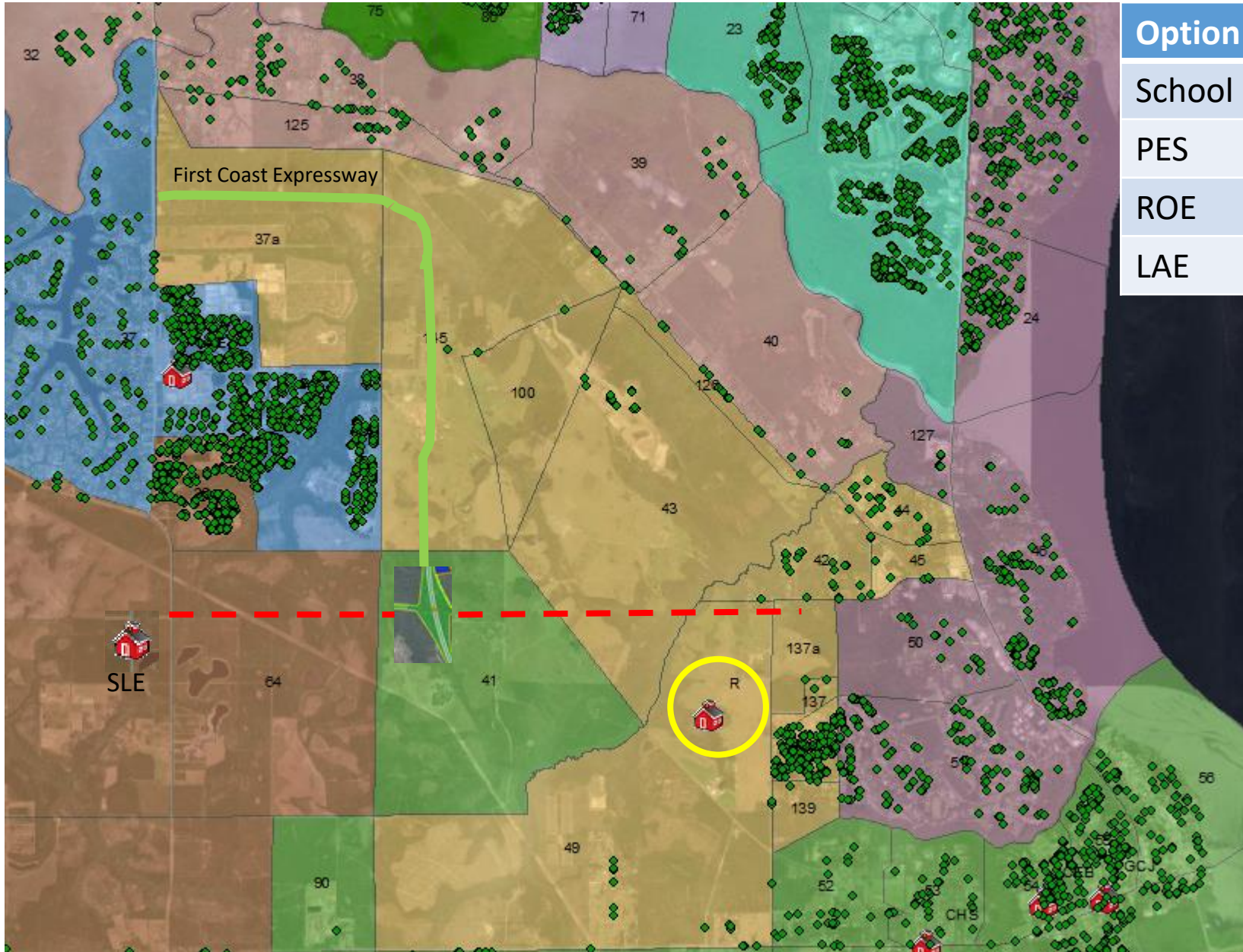
- 1) Cross Creek (1300) 7 years
- 2) Avonlea Hills (774) 4 years
- 3) Rolling Hills (139) 2 years
- 4) Royal Pointe (62) 1 year
- 5) Village Park (300) 2 years
- 6) Creek View Trail (1820) 8 years
- 7) Annabel Isl Phase 1 (245) 3 years
- 8) Reinhold North (725) 5 years

## Area Growth

- Magnolia West (PES)
- \*Willow Springs (PES)
- Edgewater Landing (ROE)
- \*Cross Creek (LAE)
- \*Avonlea Hills (LAE)
- \*Annabelle Island Phase I and II (LAE)
- \*Creekview Trail (LAE)
- Traceland (ROE)
- \*Village Park (LAE)
- Rolling Hills (LAE)

\* 2,785 new homes...585 elementary students projected

# Proposed Attendance Boundary, School "R" Option 1



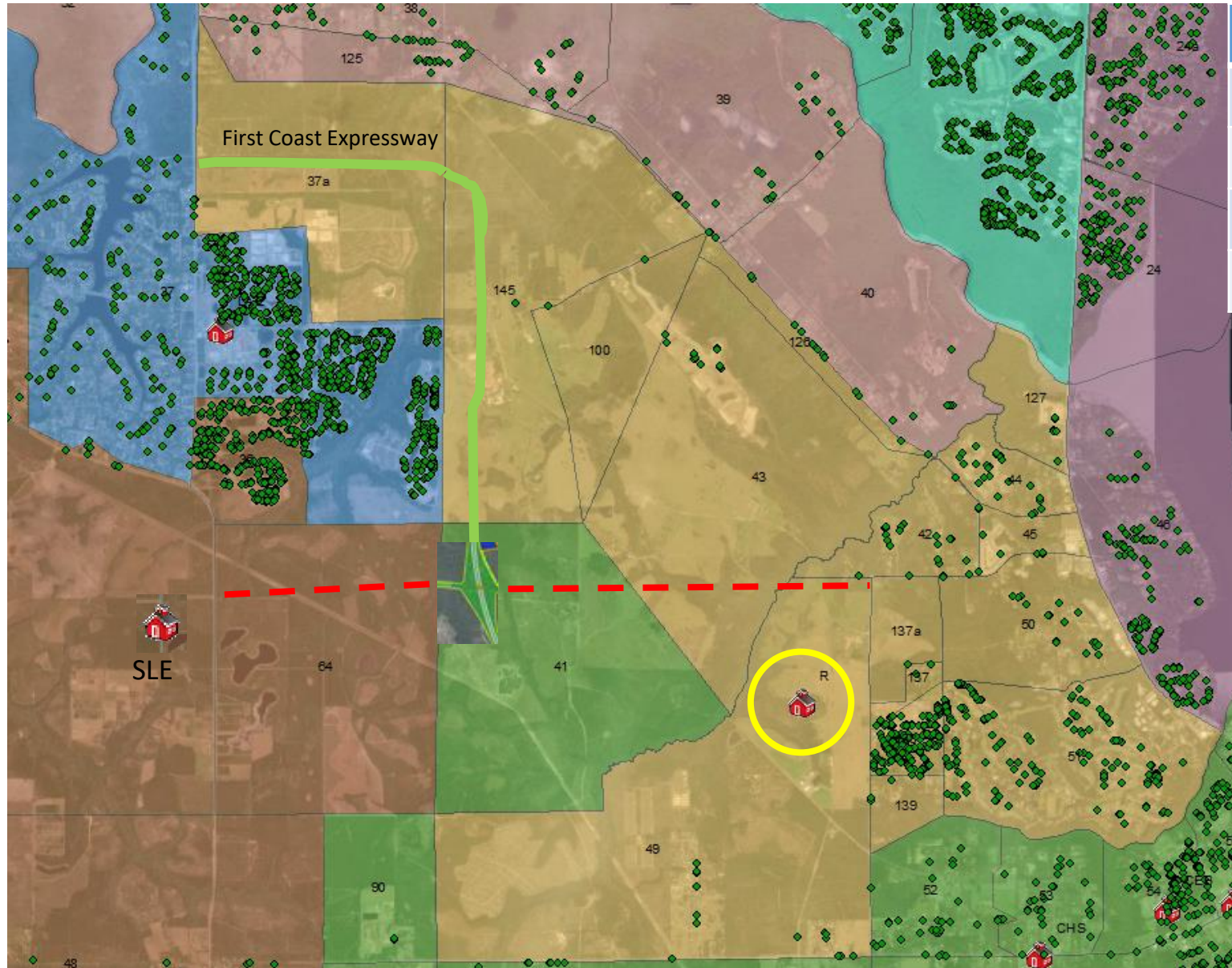
Option 1	Impact	Attendance	% Capacity
School "R"	297	297	34%
PES	-210	936	85%
ROE	-29	489	72%
LAE	-22	859	89%

Area in **gold** represents the Attendance Boundary for school "R": **Option 1**

- Magnolia West
- \*Willow Springs
- Edgewater Landing
- \*Cross Creek
- \*Avonlea Hills
- \*Annabelle Island Phase I and II
- \*Creekview Trail
- \*Village Park
- Traceland

\* 2,785 new homes...585 elementary students projected

## Proposed Attendance Boundary, School "R" Option 2



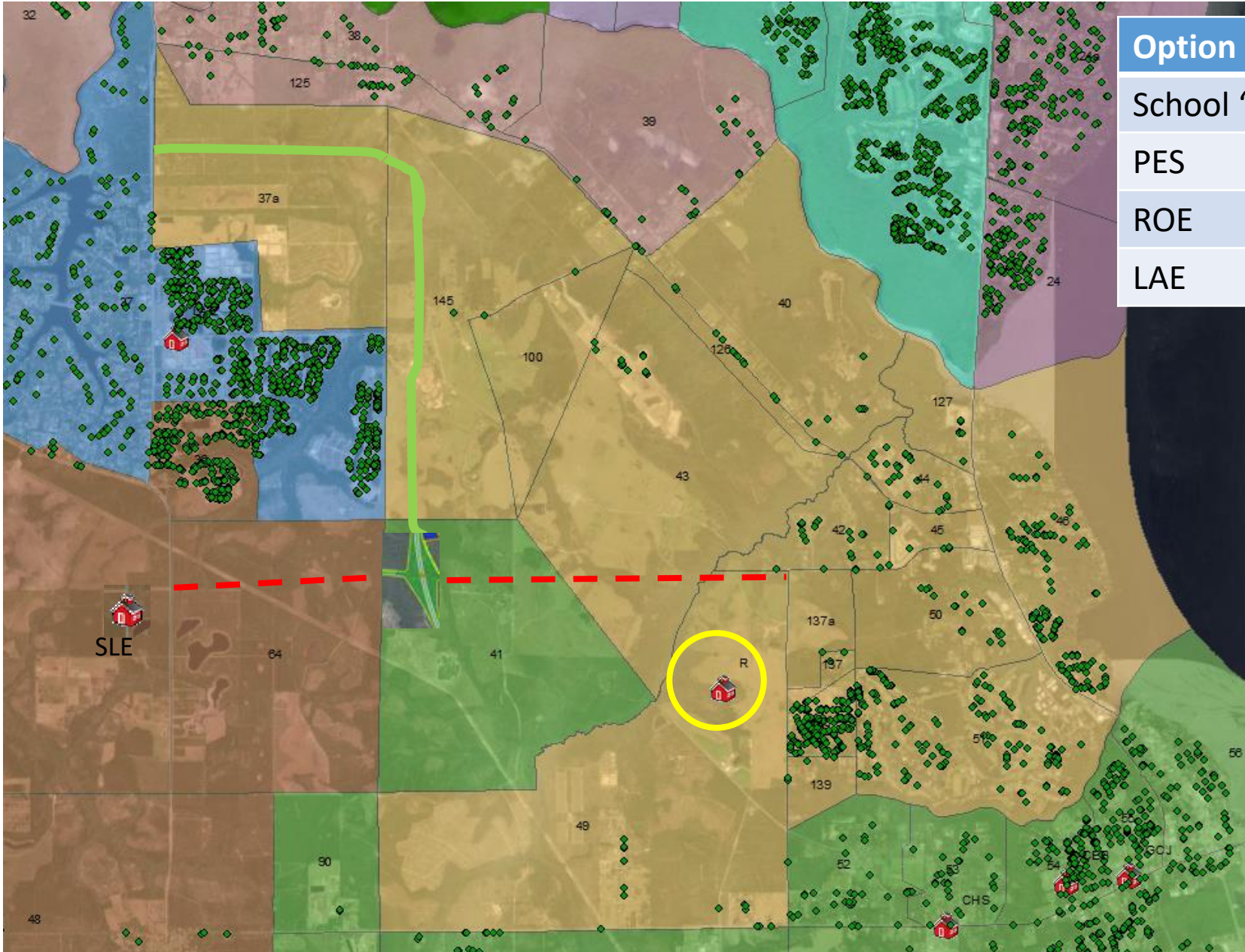
Option 2	Impact	Attendance	% Capacity
School "R"	442	442	52%
PES	-358	788	71%
ROE	-29	489	72%
LAE	-22	859	89%

Area in **gold** represents the Attendance Boundary for school "R": **Option 2**

- Magnolia Point
- Black Creek Village
- Magnolia West
- \*Willow Springs
- Edgewater Landing
- \*Cross Creek
- \*Avonlea Hills
- \*Annabelle Island Phase I and II
- \*Creekview Trail
- Traceland
- \* 2,785 new homes...585 elementary students projected

*\*note: Students currently transported to LAE (3.0 miles) will also be transported to School "R" (5.2 miles)*

# Proposed Attendance Boundary, School "R" Option 3



Option 3	Impact	Attendance	% Capacity
School "R"	603	603	71%
PES	-498	648	59%
ROE	-38	480	71%
LAE	-22	859	89%

Area in **gold** represents the Attendance Boundary for school "R": **Option 3**

- Magnolia Point
- Black Creek Village
- East of US 17, between Gov's Creek and Black Creek
- Section of ROE's AZ along CR 209 (area 40)
- Magnolia West
- \*Willow springs
- Edgewater Landing
- \*Cross Creek
- \*Avonlea Hills
- \*Annabelle Island Phase I and II
- \*Creekview Trail
- Traceland
- \* 2,785 new homes...585 elementary students projected

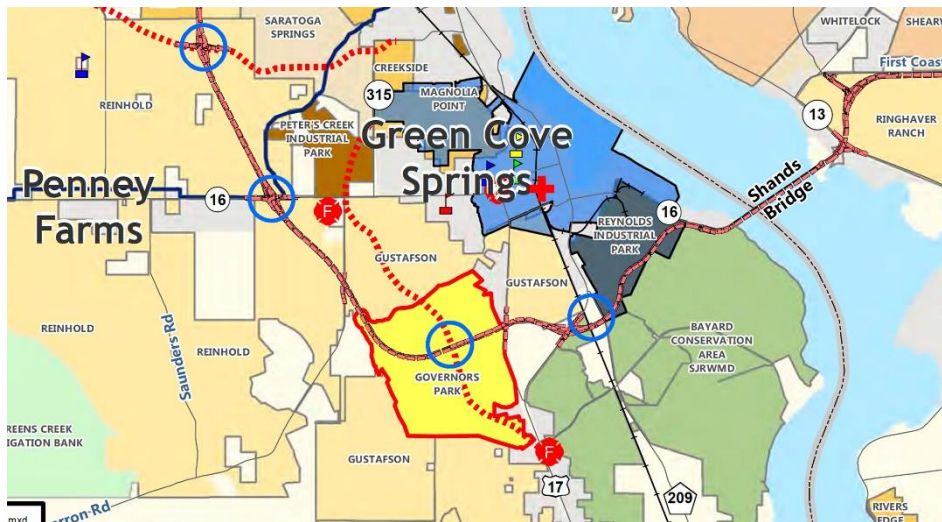
# Clay County Growth summary

## First Coast Expressway completion: 2025

Lake Asbury area:	2,985		1,405 elementary students
Fleming Island/Black Creek:	550	6,694 homes ≈	431 middle school students
Oakleaf/Middleburg:	3,159		892 high school students

## Governors Park DRI:

6,294 homes ≈ 1,321 elementary students  
405 middle school students  
840 high school students



# Staff Recommendations

Boundary/attendance changes

- Oakleaf High School : “Both options” (2021-2022 SY)
- Lake Asbury JH portions to Lakeside JH (2022-2023 SY)
- Tynes ES portions to Coppergate ES (2022-2023 SY)
- No recommendations for School “R” attendance boundary at this time



Questions???