

Safe and Secure Schools, How Do We Get There?

Chris Gibbs

DLR Group

Safe and Secure Schools,
How Do We Get There?
FEFPA 2019

AGENDA

The Challenge

The Tension

The evolution of education

The Opportunity

How do we respond

Develop a plan

The Human Factor

Resources

Discussion

The Challenge

U.S. school shootings (2013-2018)

SOURCE: Everytown Research

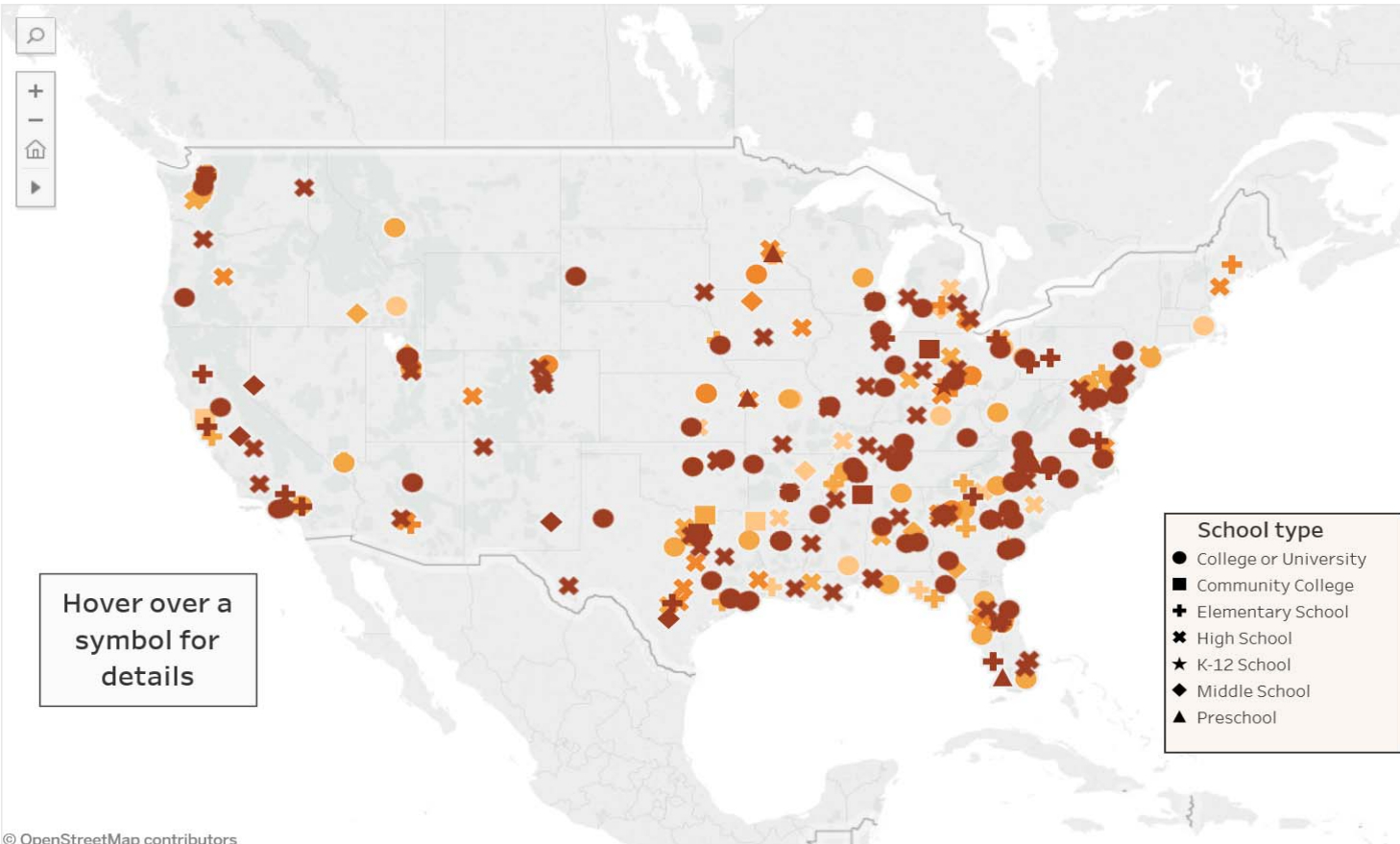


CLICK to highlight a category

- Attack on other persons(s) resulting in injury or death
- Gun fired but no one injured
- Attempted/completed suicide, no intent to injure others
- Gun fired unintentionally resulting in injury or death

CHOOSE a year

(All)



© OpenStreetMap contributors

Safe and Secure Schools,
How Do We Get There?
FEFPA 2019



The Tension

Evolution of learning

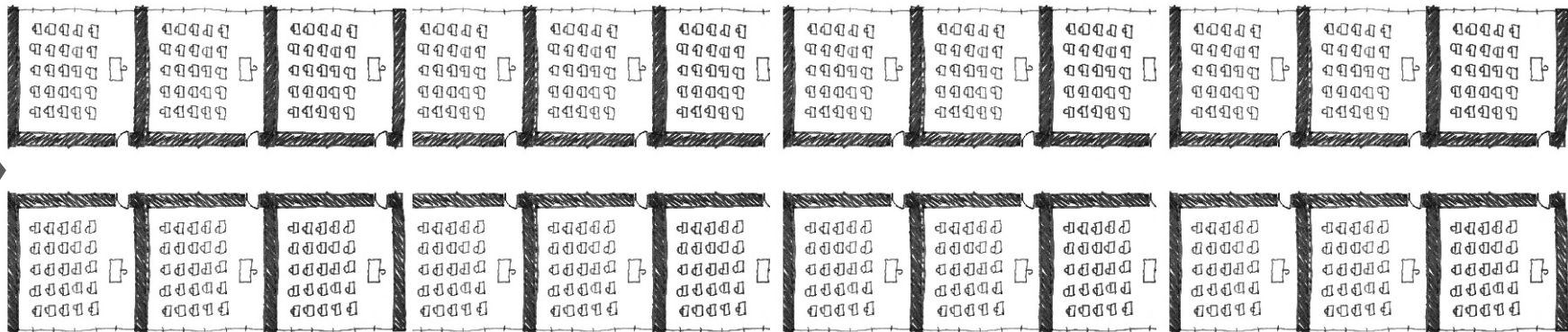
THEN

Safe and Secure Schools,
How Do We Get There?
FEFPA 2019



SCHOOL

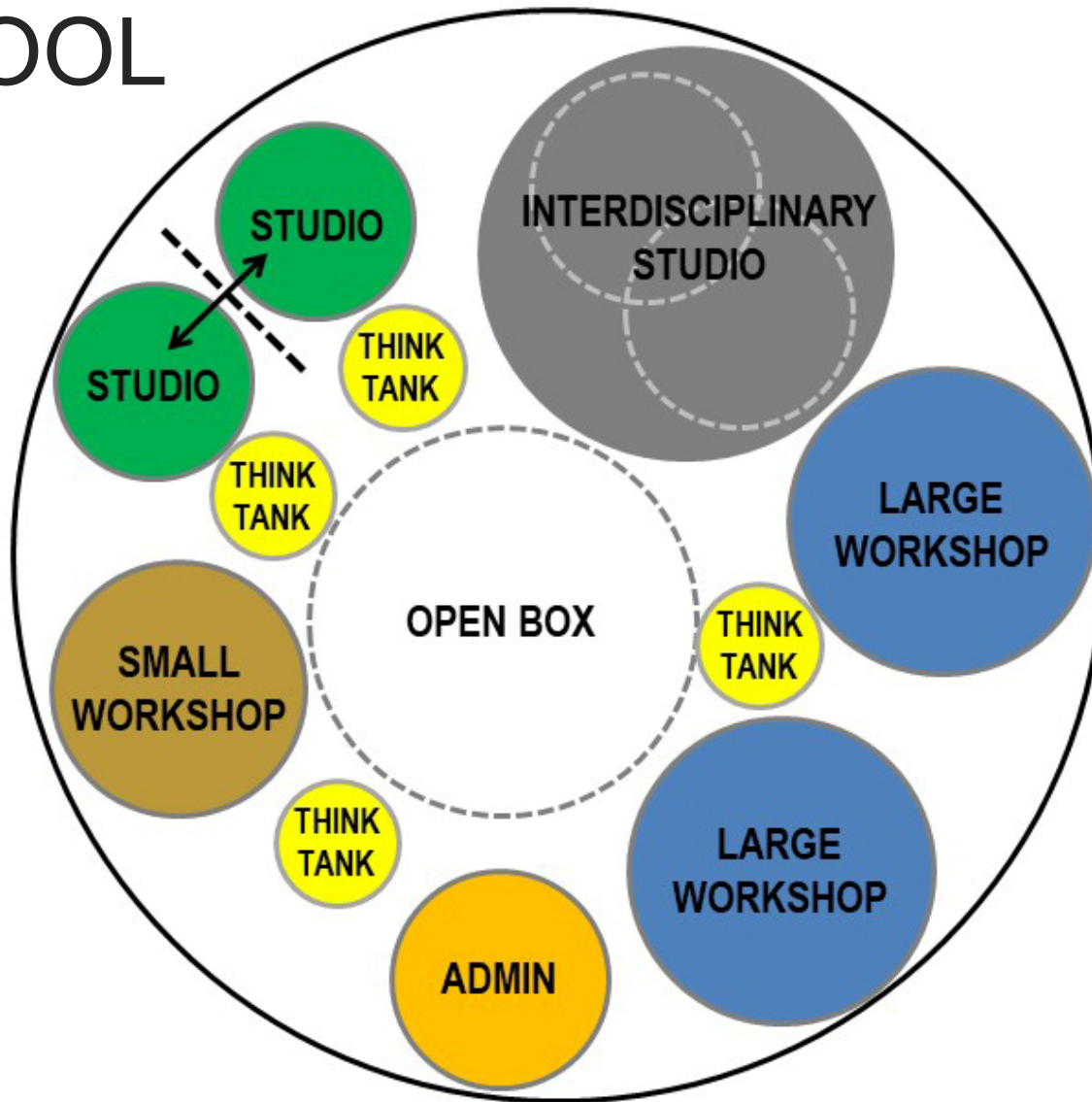
Safe and Secure Schools,
How Do We Get There?
FEFPA 2019



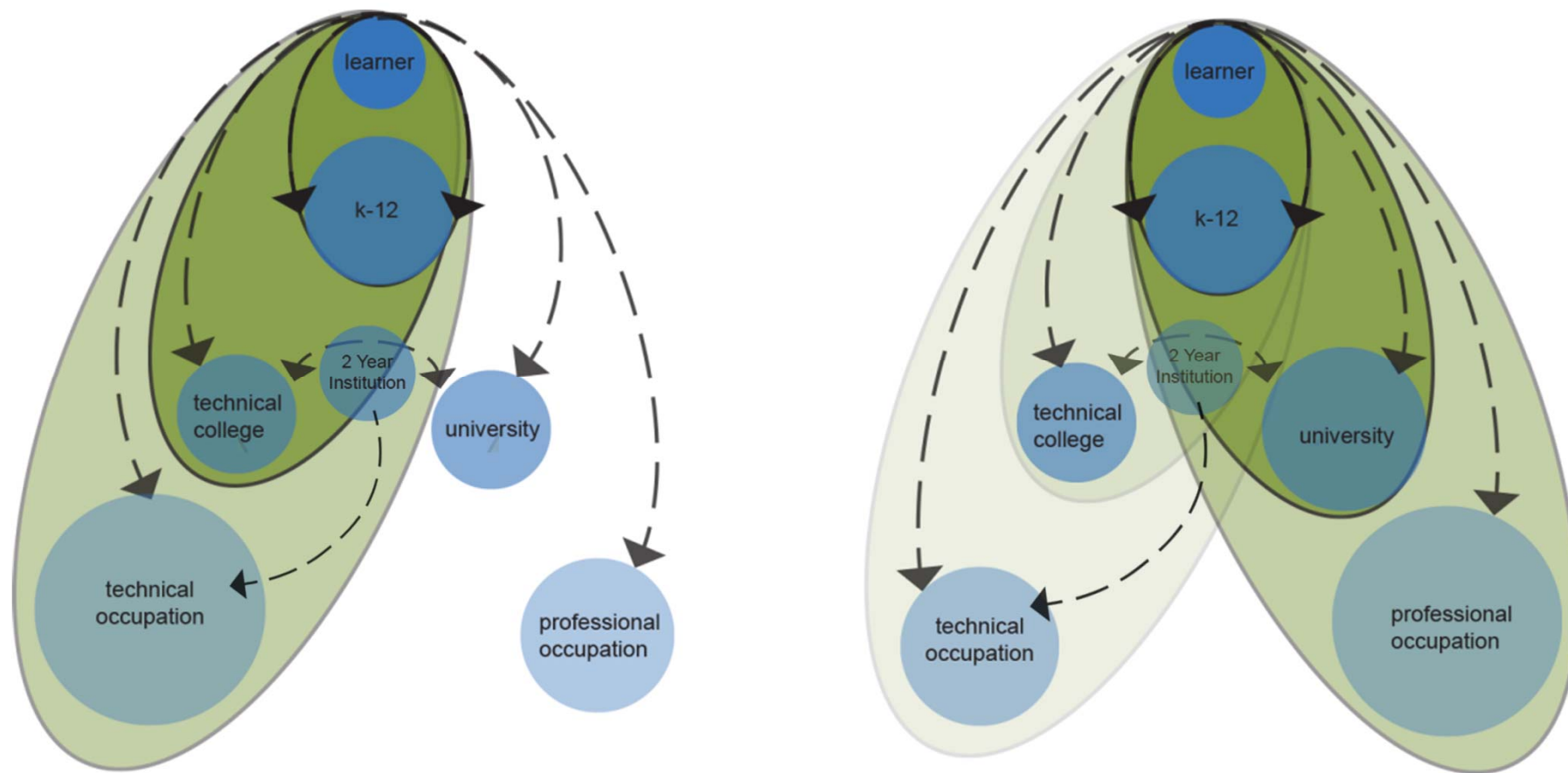
Input: Kindergartener

Output: 12th Grader

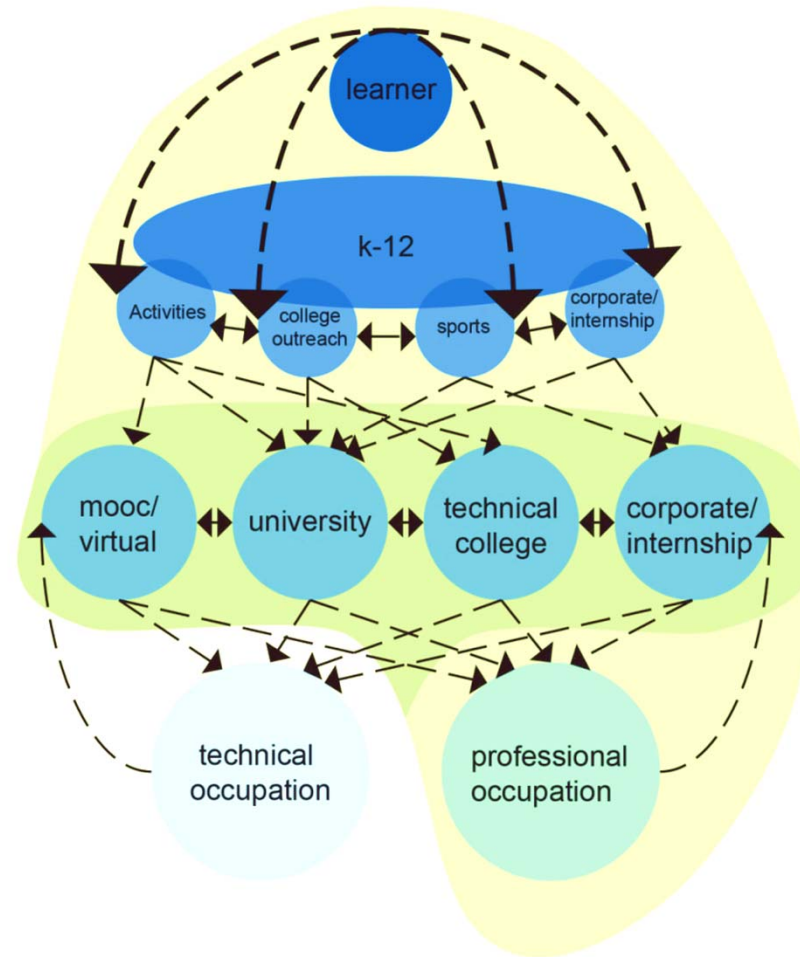
SCHOOL



Safe and Secure Schools,
How Do We Get There?
FEFPA 2019



TRADITIONAL PATHWAYS



MULTI-DIRECTIONAL



when?



how?



how often?

SCHEDULE



where?

NOW

Safe and Secure Schools,
How Do We Get There?
FEFPA 2019



DIFFERENTLY

Safe and Secure Schools,
How Do We Get There?
FEFPA 2019



ALPHA GENERATION:

2010 - Present:

They break free of any boundaries
They don't care about privacy
They don't play by the rules

The Opportunity

How can we respond

Crime Prevention Through Environmental Design: 1971

Design principles that deter crime by influencing offender decisions preceding bad behavior or criminal acts.

Areas of Focus:

Surveillance

Access Control

Territorial Reinforcement

What is CPTED?

Safe and Secure Schools,
How Do We Get There?
FEFPA 2019



See and Be Seen!

Landscape density and height

Good sight lines

Lighting – exterior and interior

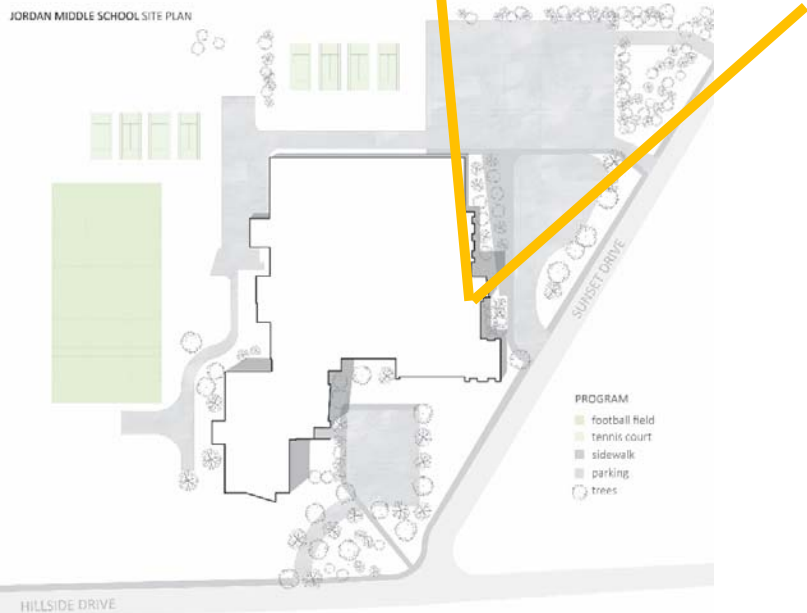
Windows

Building configuration

Adult-occupied areas throughout building

Doorless restrooms

Safe and Secure Schools,
How Do We Get There?
FEFPA 2019



Passive Surveillance

Safe and Secure Schools,
How Do We Get There?
FEFPA 2019



Surveillance & Supervision

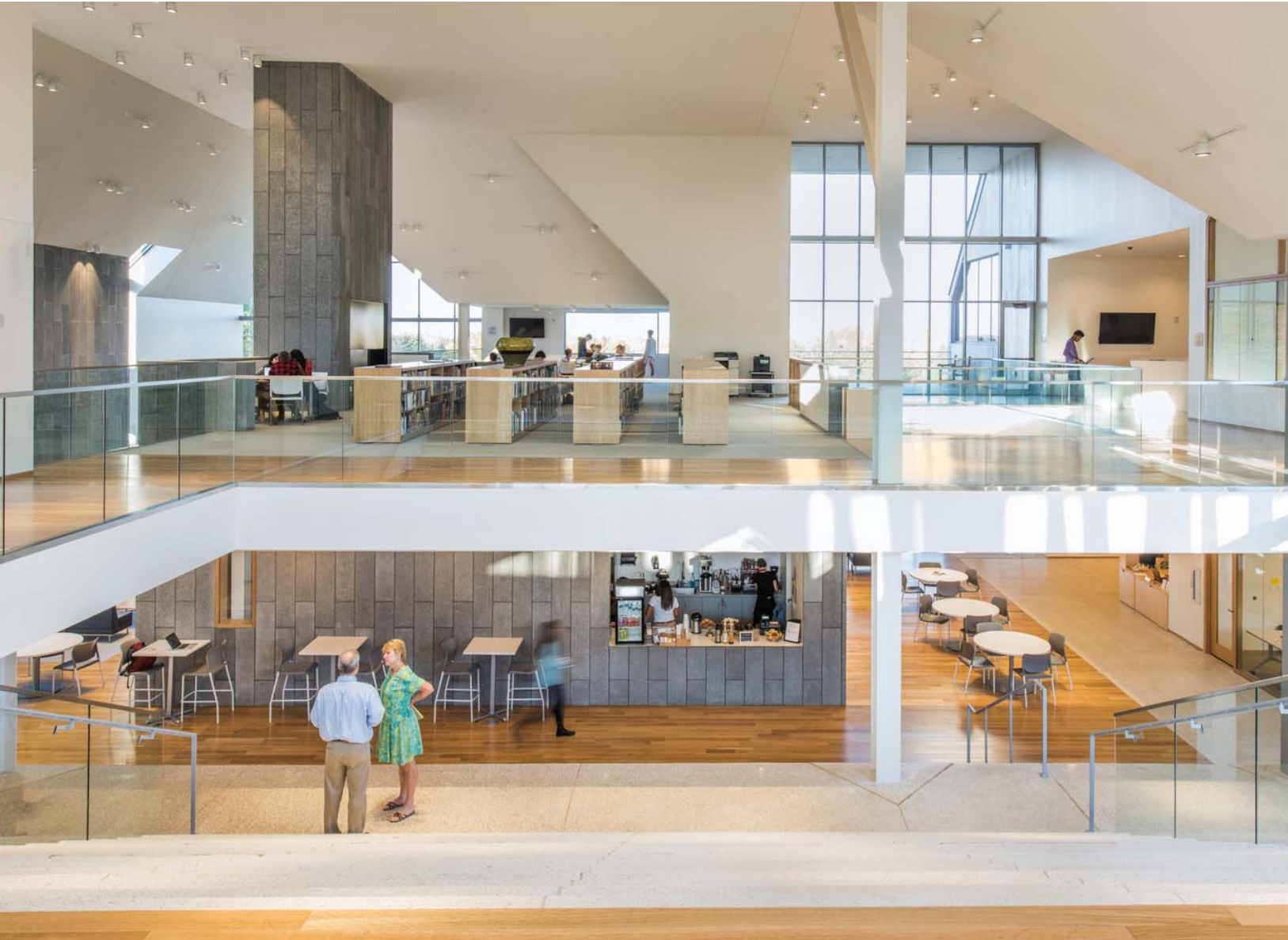
Safe and Secure Schools,
How Do We Get There?
FEFPA 2019



Visibility and Transparency

Safe and Secure Schools,
How Do We Get There?
FEFPA 2019





Safe and Secure Schools,
How Do We Get There?
FEFPA 2019

Passive Surveillance

Goal: View maximum area with minimum staff.

Safe and Secure Schools,
How Do We Get There?
FEFPA 2019

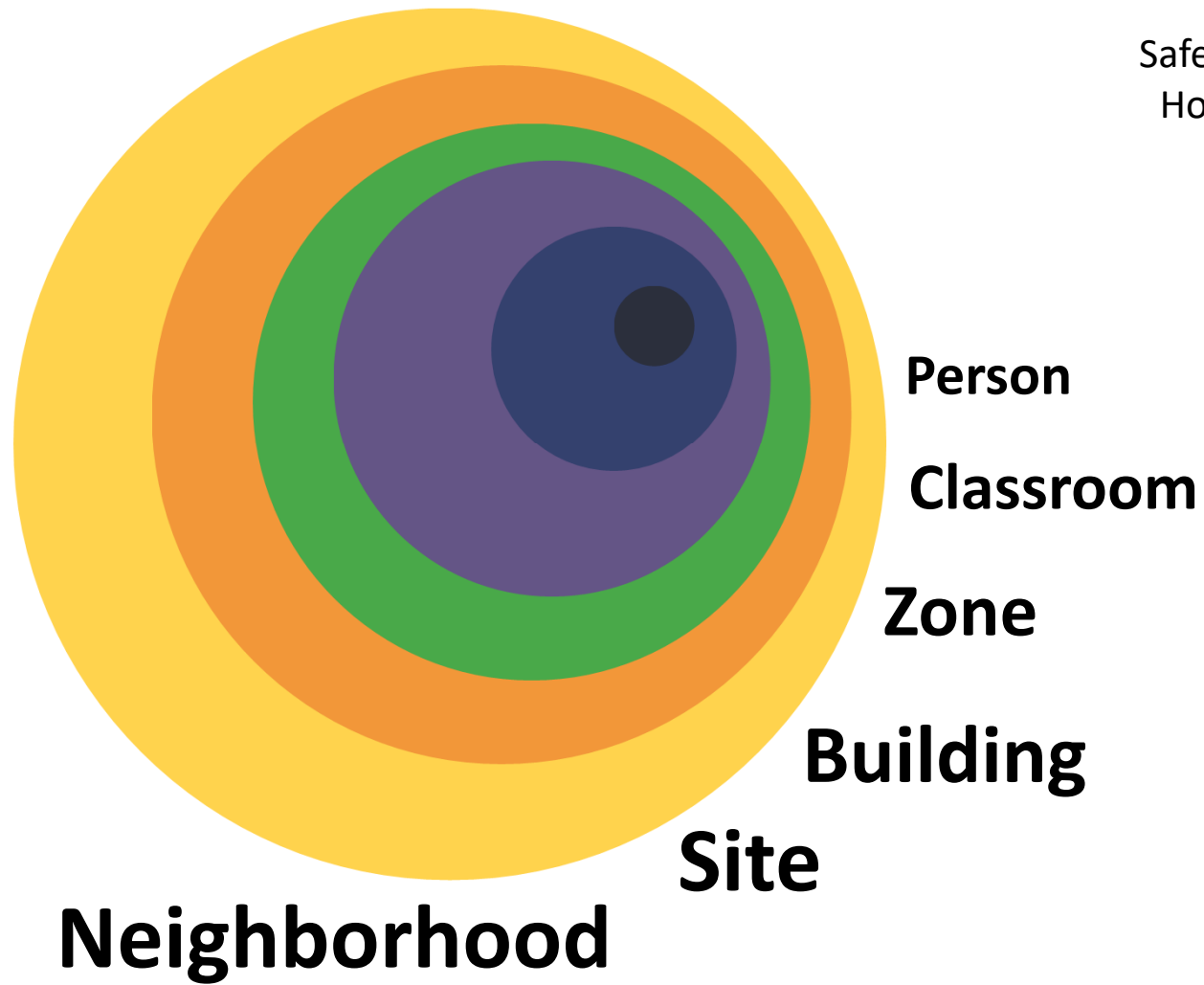


What is CPTED?

Safe and Secure Schools,
How Do We Get There?
FEFPA 2019



Access Control



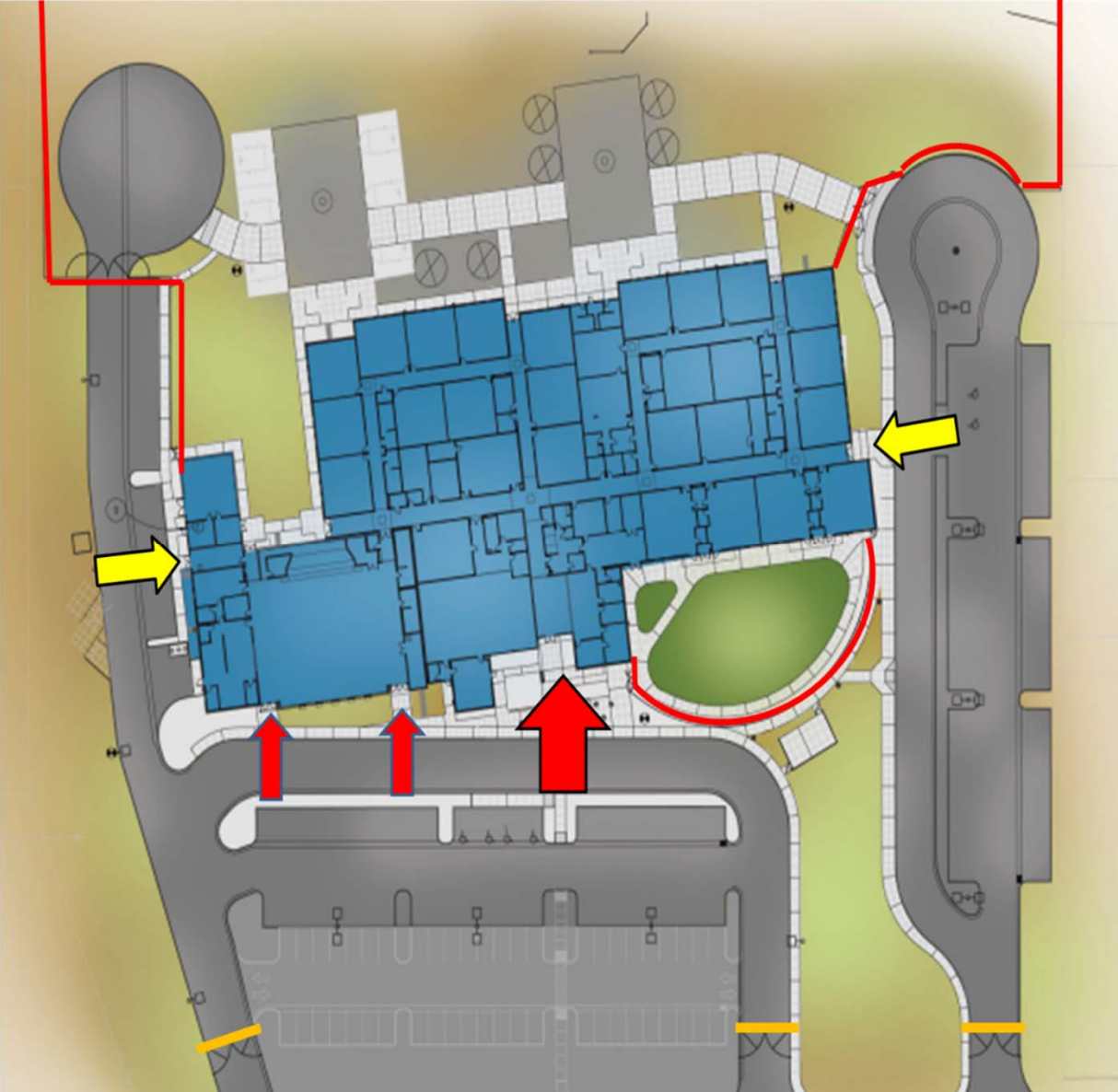
Person
Classroom
Zone
Building
Site

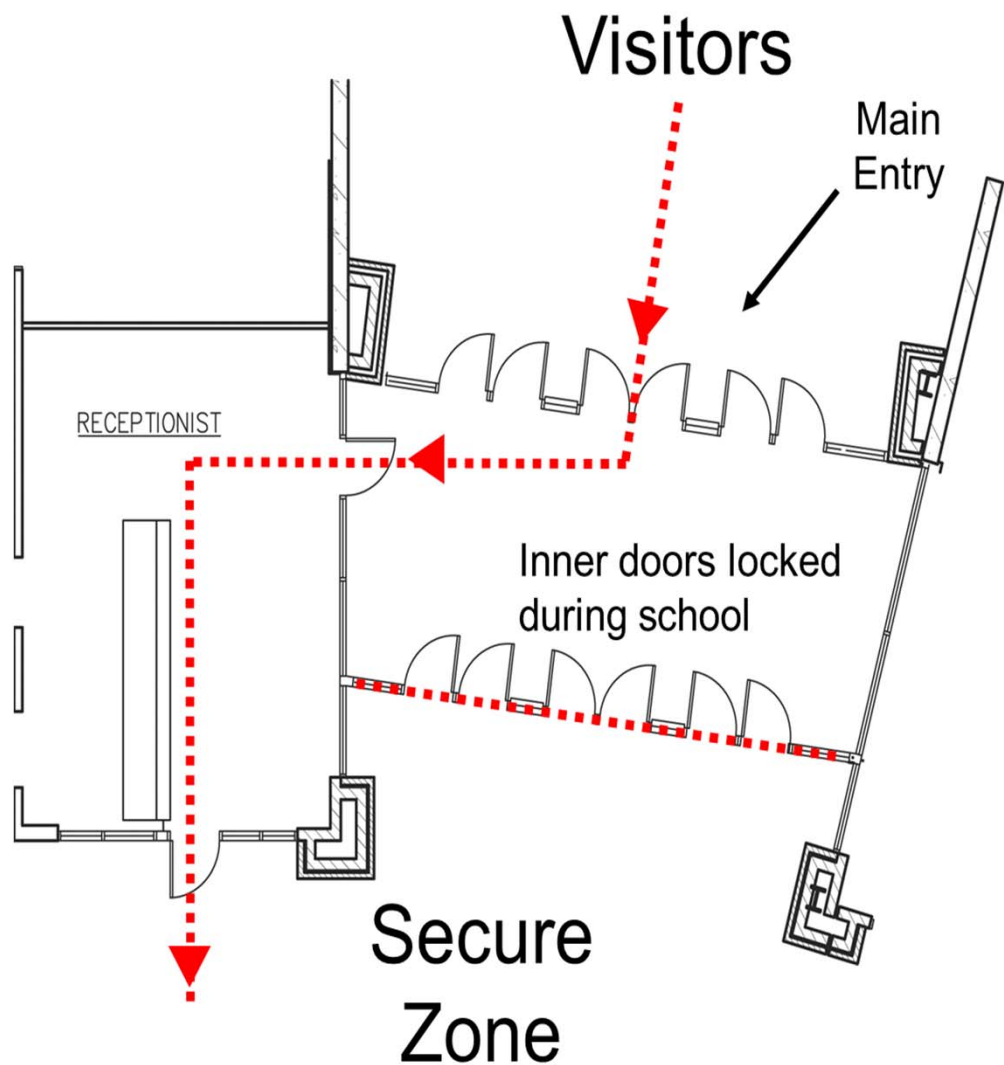
Neighborhood

Access Control

Safe and Secure Schools,
How Do We Get There?
FEFPA 2019

Limit Entry Points





Access Control



Safe and Secure Schools,
How Do We Get There?
FEFPA 2019

Access Control

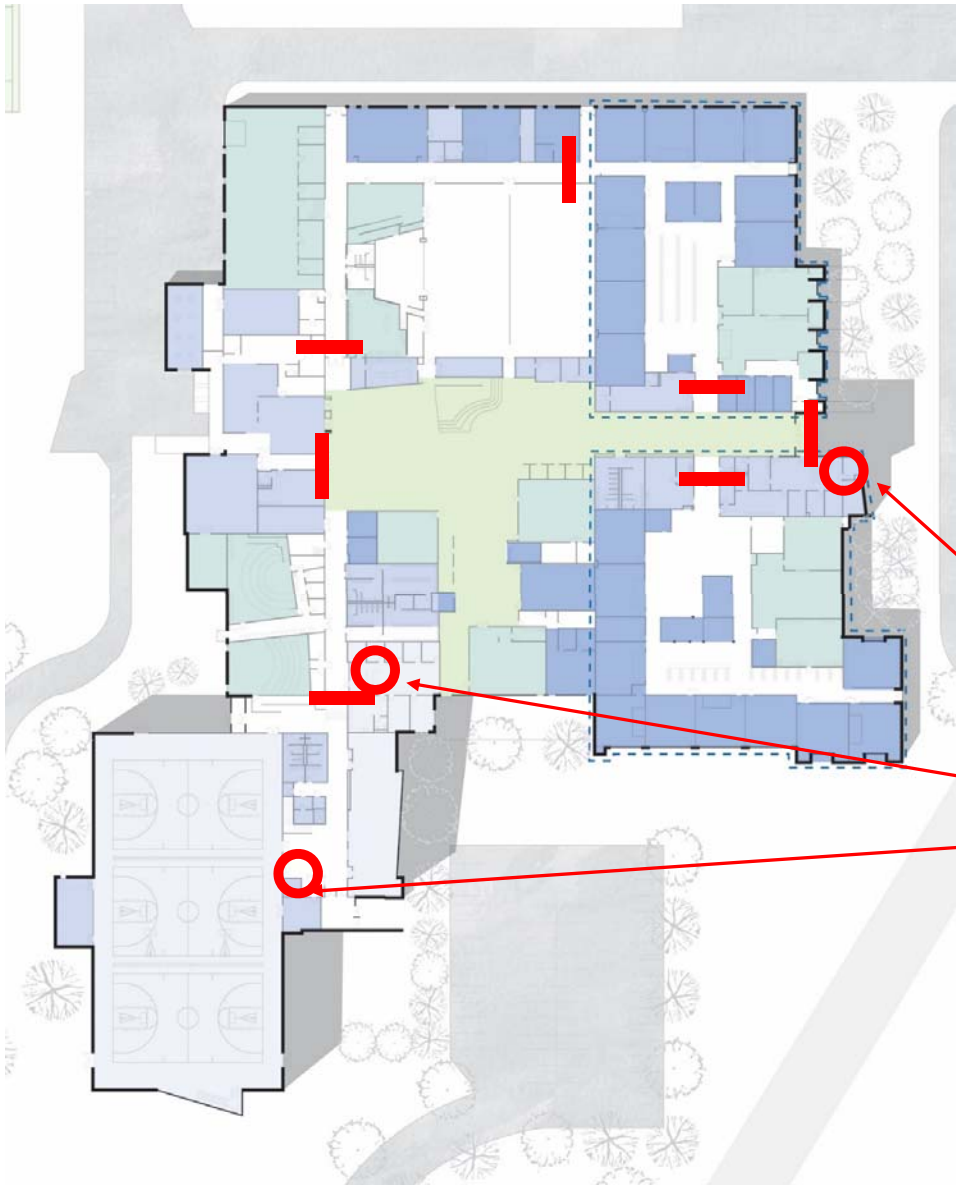
Access Control

Safe and Secure Schools,
How Do We Get There?
FEFPA 2019



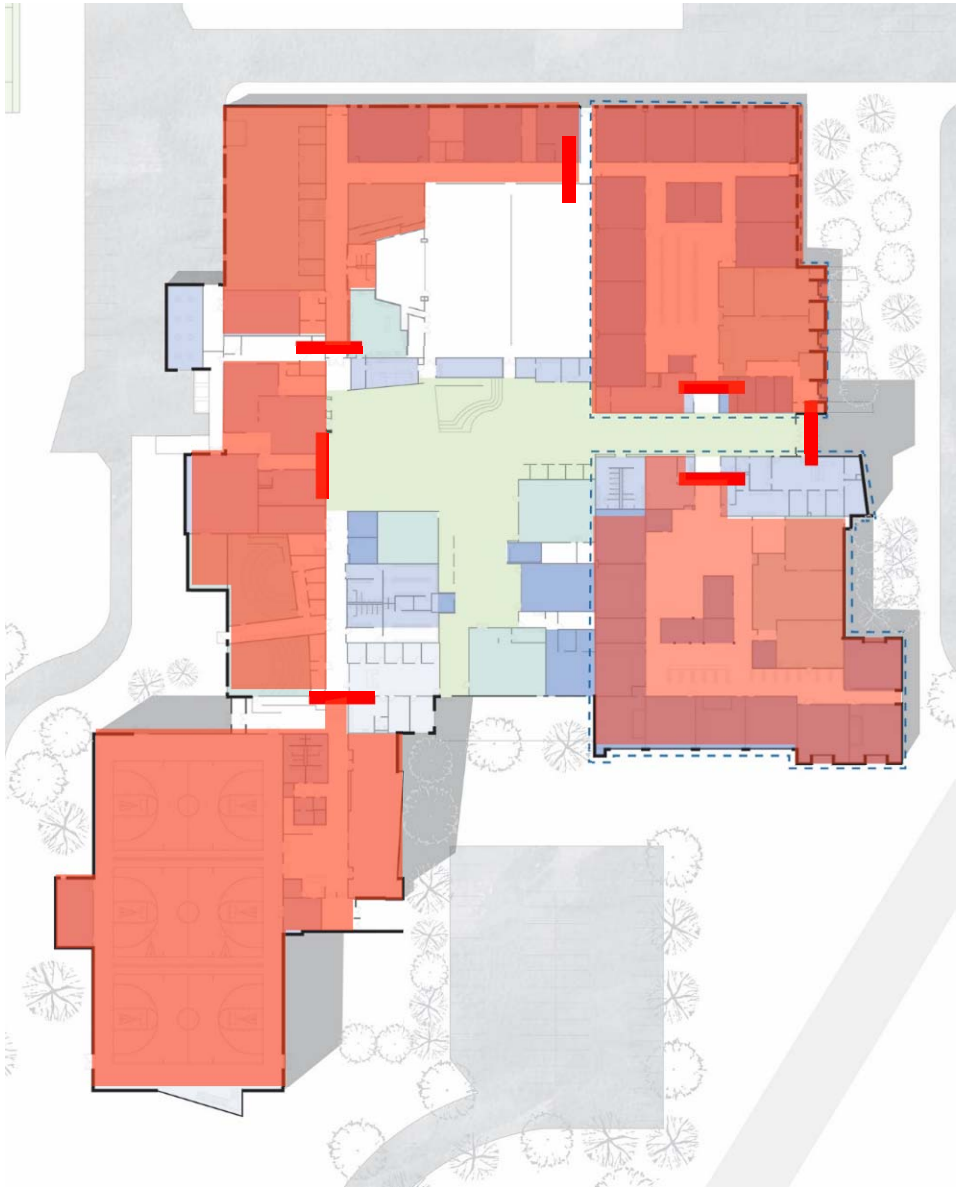
Safe and Secure Schools,
How Do We Get There?
FEFPA 2019

Building Lockdown



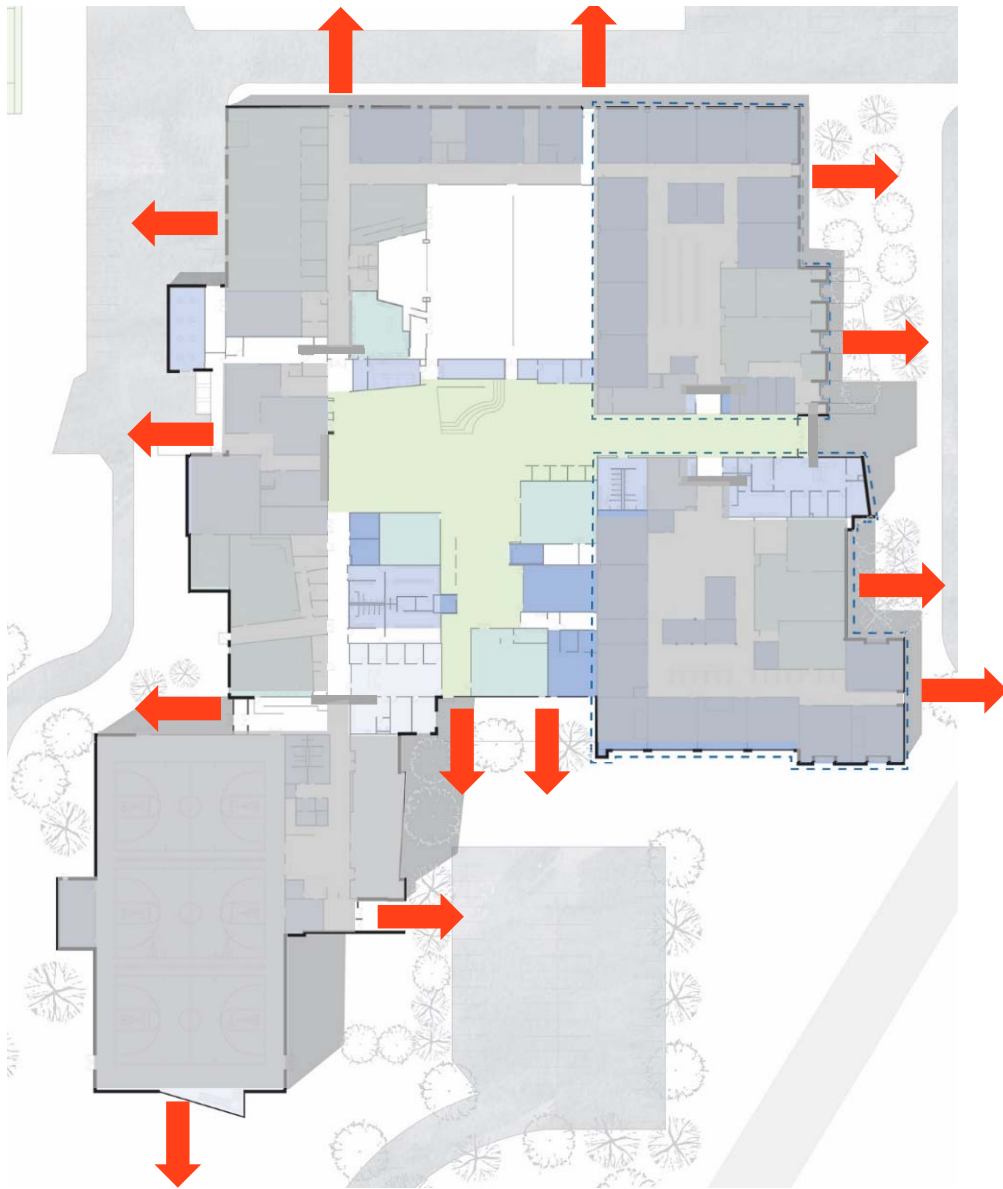
Switch at reception
releases magnetic
door holder

Safe and Secure Schools,
How Do We Get There?
FEFPA 2019



Building Zoning

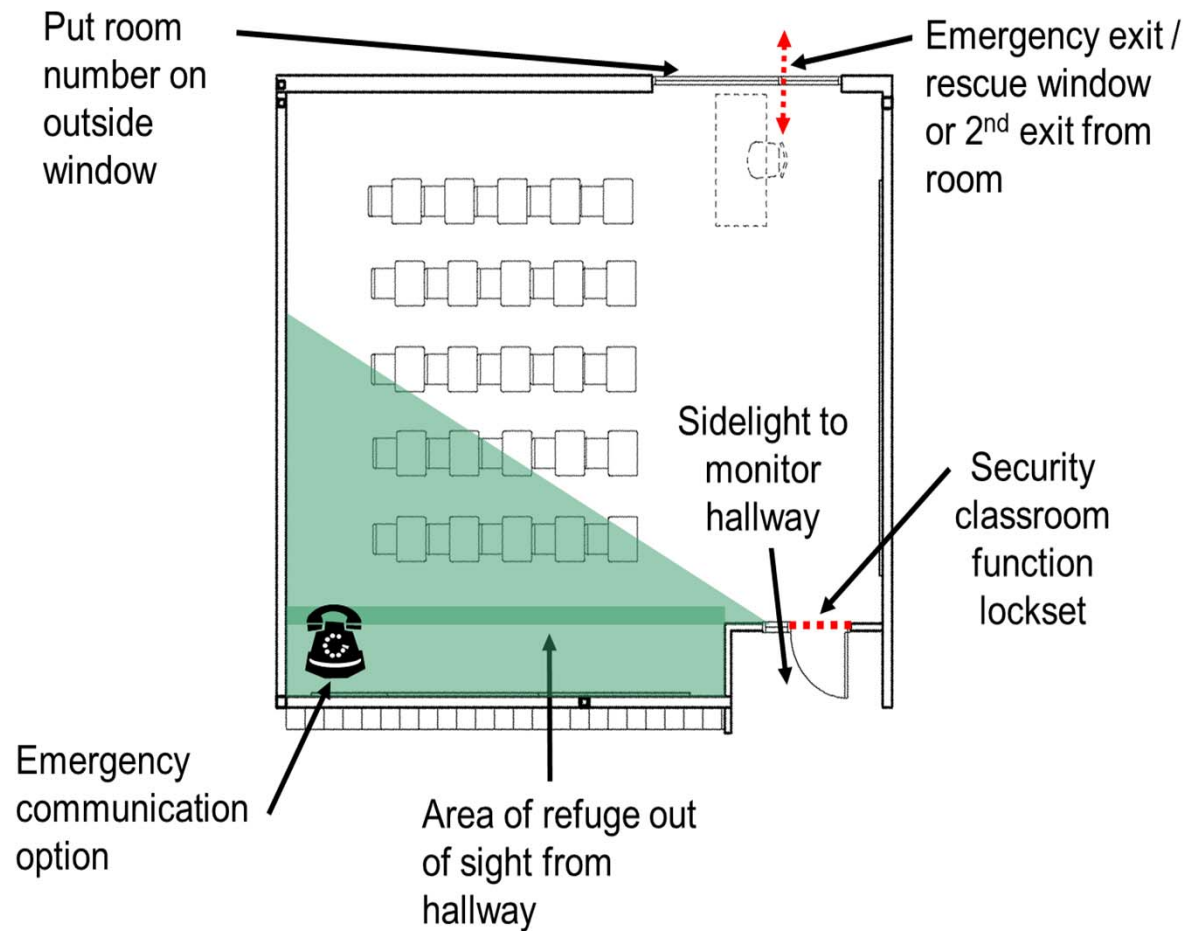
Safe and Secure Schools,
How Do We Get There?
FEFPA 2019



Building Exiting

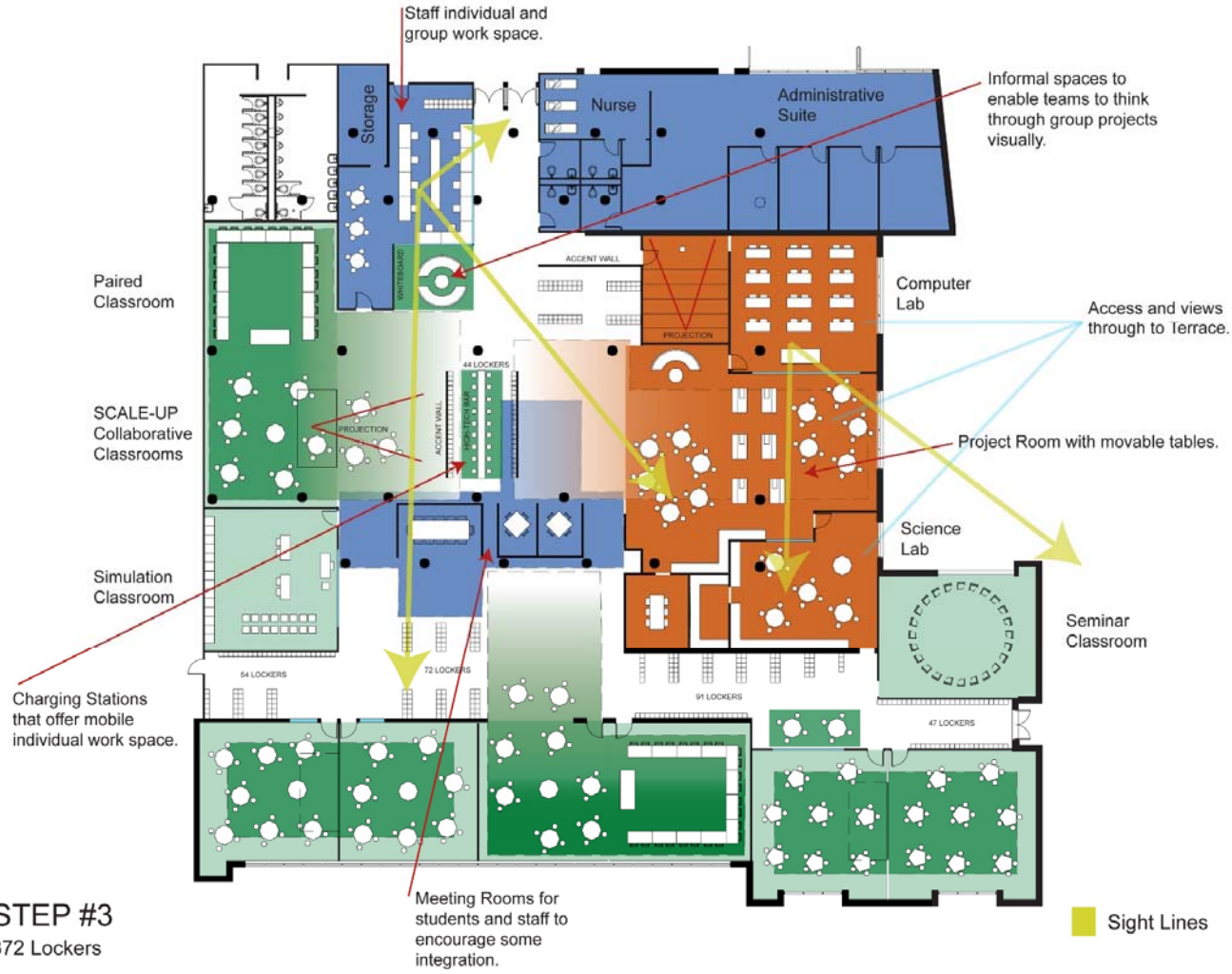
Classroom Layout

Safe and Secure Schools,
How Do We Get There?
FEFPA 2019



Classroom Layout

Safe and Secure Schools,
How Do We Get There?
FEFPA 2019



STEP #3
372 Lockers



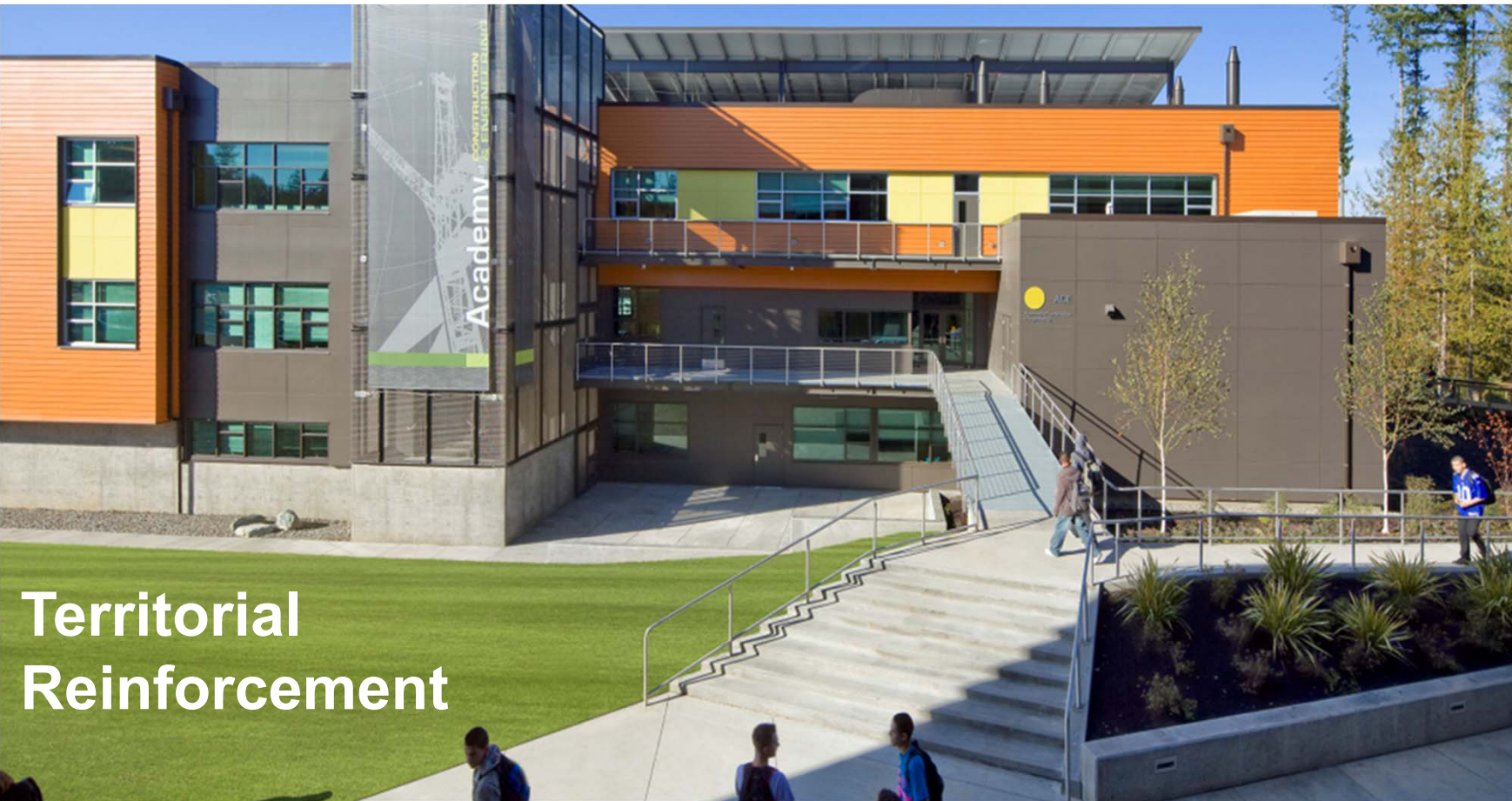
Personal Safety

Safe and Secure Schools,
How Do We Get There?
FEFPA 2019



What is CPTED?

Safe and Secure Schools,
How Do We Get There?
FEFPA 2019



**Territorial
Reinforcement**

Territorial Reinforcement

Safe and Secure Schools,
How Do We Get There?
FEFPA 2019

Create or extend a “sphere of influence” using paving treatments, landscaping, and signage to clearly identify campus boundaries.



Territorial Reinforcement

Monuments convey a sense of importance and respect.

Safe and Secure Schools,
How Do We Get There?
FEFPA 2019



Territorial Reinforcement

Safe and Secure Schools,
How Do We Get There?
FEFPA 2019

- “Broken Window Theory”: A well maintained campus may stop further vandalism and avoid escalation into more serious crime.
- Schools with better building conditions have lower rate of behavioral problems.
- Rapid maintenance response conveys pride and ownership.



Technology Considerations



Threat Suspension System

Intrusion Detection

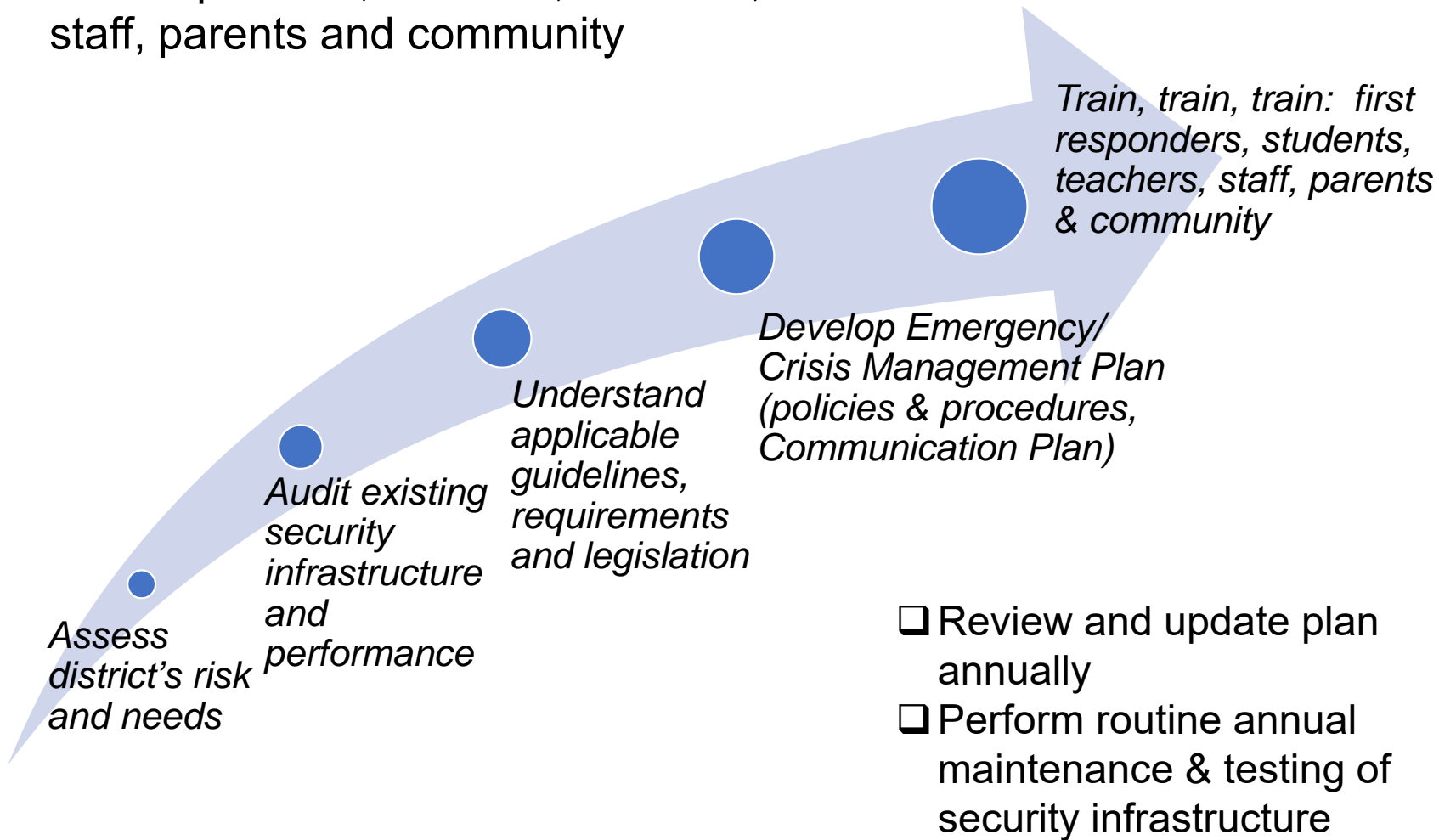
Video Surveillance

Access Control

Develop a Plan

Collaborate with key stakeholders:

first responders, students, teachers,
staff, parents and community



Best Practices and Standards: The Four Phases of Emergency Management



- “All Hazards” approach
- Developed collaboratively with community partners
- Based upon sound data and information
- Practiced on a regular basis
- Continually reviewed and updated
- Living documents
- Command structure (NIMS)
- Tailored to conditions of individual buildings
- Address all four phases of emergency management
- Include a threat assessment process

The Human Factor

The Human Factor

Safe and Secure Schools,
How Do We Get There?
FEFPA 2019

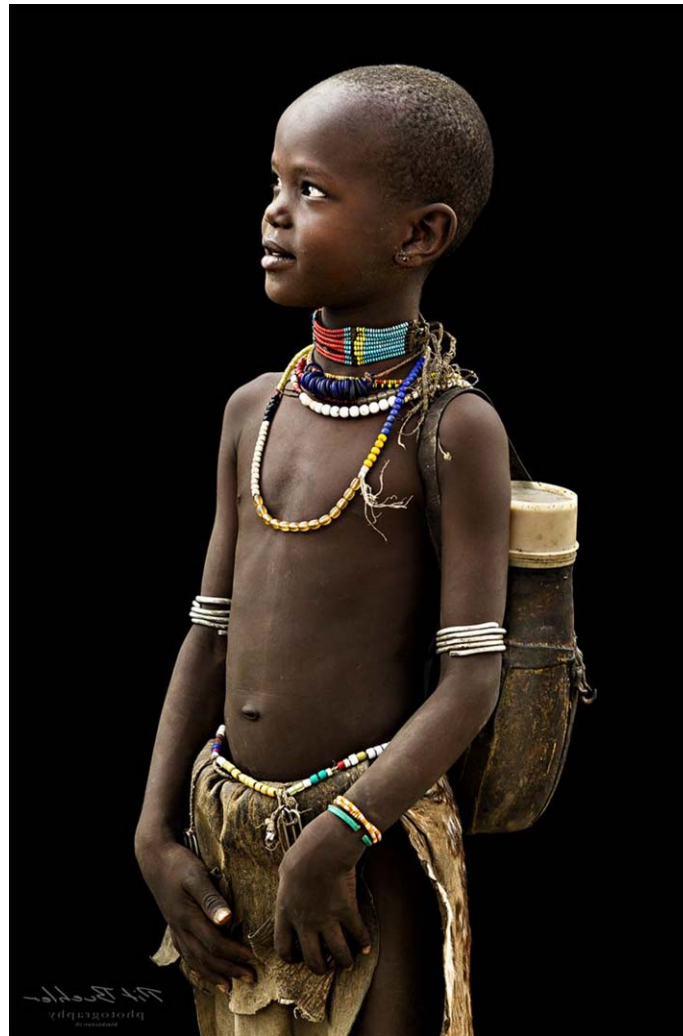




Safe and Secure Schools,
How Do We Get There?
FEFPA 2019



Safe and Secure Schools,
How Do We Get There?
FEFPA 2019



Safe and Secure Schools,
How Do We Get There?
FEFPA 2019

it takes a

VILLAGE

Resources

School Safety and Security Resources

Safe and Secure Schools,
How Do We Get There?
FEFPA 2019

- U.S. Department of Homeland Security
www.ready.gov/business/index.html
- U.S. Department of Education Office of Safe and Healthy Students
<http://www2.ed.gov/about/offices/list/oese/oshs/index.html>
- FEMA
www.fema.gov/areyouready/basic_preparedness.shtm
- U.S. Department of Education Emergency Planning Web site
www.ed.gov/emergencyplan
- Emergency Response and Crisis Management Technical Assistance (TA) Center
www.ercm.org

School Safety and Security Resources

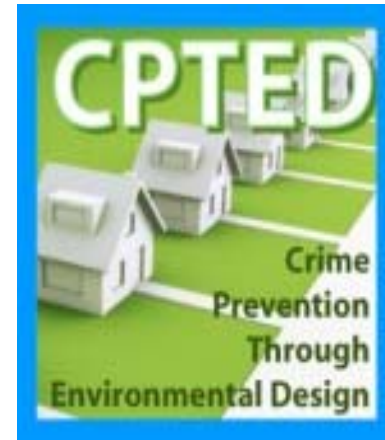
- ❑ Practical Information on Crisis Planning
www.ed.gov/admins/lead/safety/emergencyplan/crisisplanning.pdf
- ❑ U.S. Department of Education. “Emergency Exercises: An Effective Way to Validate School Safety Plans,” ERCM Express Newsletter, Vol.2, Issue 3, (2006)
http://rems.ed.gov/views/documents/Emergency_NewsletterV213.pdf
- ❑ U.S. Department of Education. A Guide to Vulnerability Assessments: Key Principles for Safe Schools. (2008)
<http://www.ed.gov/emergencyplan>
- ❑ U.S. Department of Education Action Guide for Institutions of Higher Learning
http://rems.ed.gov/docs/REMS_ActionGuide.pdf

School Safe Design Resources

- International CPTED Association
<http://www.cpted.net/>



- CPTED Training
<http://www.cptedtraining.net/>



- Dept. of Homeland Security – School Safety
<http://www.dhs.gov/school-safety>

- Dept. of Homeland Security – Run! Hide! Fight! Video
<http://www.youtube.com/watch?v=p4IJA5Zpzz4>



Grant Funding

- ❑ School security grants: www.grants.gov
- ❑ FEMA's Homeland Security Grant Program (HSGP) can be used for planning, purchasing equipment, training, and other efforts to support school security.
<http://www.fema.gov/fy-2013-homeland-security-grant-program-hsgp-0>

Questions and discussion

Chris Gibbs

DLR Group

cgibbs@dlrgroup.com