



Build Better for Broward College

with Manufactured Interior Construction Solutions

Presenters



Ana Ovalles, Director of Facilities Planning at Broward College



Carolyn E. Farley, DIRTT Education Specialist



Jorge Garcia, DIRTT Representative in South Florida



Introduction

- DIRTT Environmental Solutions is a Registered Provider with The American Institute of Architects Continuing Education Systems (AIA/CES) and the IDCEC.



Manufactured Interior Construction Objectives

1. Understand the advantages of manufactured interior construction in terms of faster project delivery, cost savings, quality control, and **Health/Safety/Welfare**.
2. Analyze how this construction type mitigates risk on behalf of the owner and the contractor.
3. List the benefits of manufactured construction in terms of life safety, health related concerns, safer construction sites and healthier interiors.
4. Explore the design features of manufactured assemblies from the perspective of individualization, agility and ability to evolve with educators' needs.



About Broward College

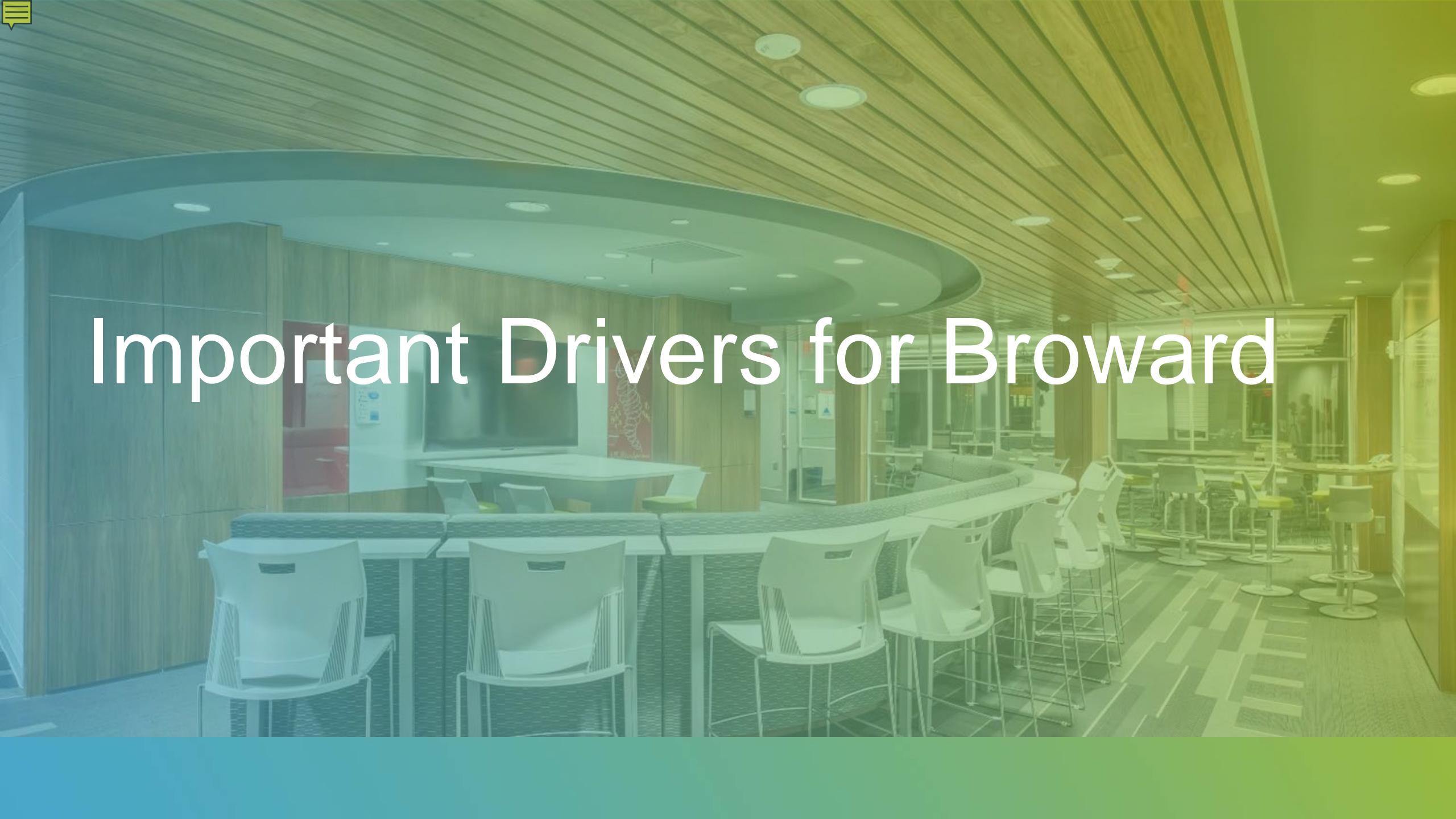


The mission at Broward College is to transform lives and enrich its diverse community through academic excellence, innovation, and meaningful career opportunities. Broward's leadership believes higher education is pivotal in improving lives and should be accessible and affordable to everyone; whether you're a traditional student or a non-traditional student, a first-generation in college student or a student from an underserved community.

Project location is the Hugh Adams Central Campus in Davie, FL



Important Drivers for Broward





Project View From Above



A photograph of the Broward College building facade. The building is a light beige color with a curved roofline. A large, curved window with teal-tinted glass is visible above the main entrance area. Below the window, the college's name and logo are displayed in blue. The logo consists of a stylized 'C' with a graduation cap on top. The text 'BROWARD COLLEGE' is in a bold, serif font. The image is set against a background of a green and yellow gradient with white line art of buildings.

 **BROWARD COLLEGE**







n the
hemicals

&
both*

3rd Floor Conference Room



Secret!
- Pro



What will tomorrow bring?



Health, Safety and Wellbeing

Health, Safety and Wellbeing

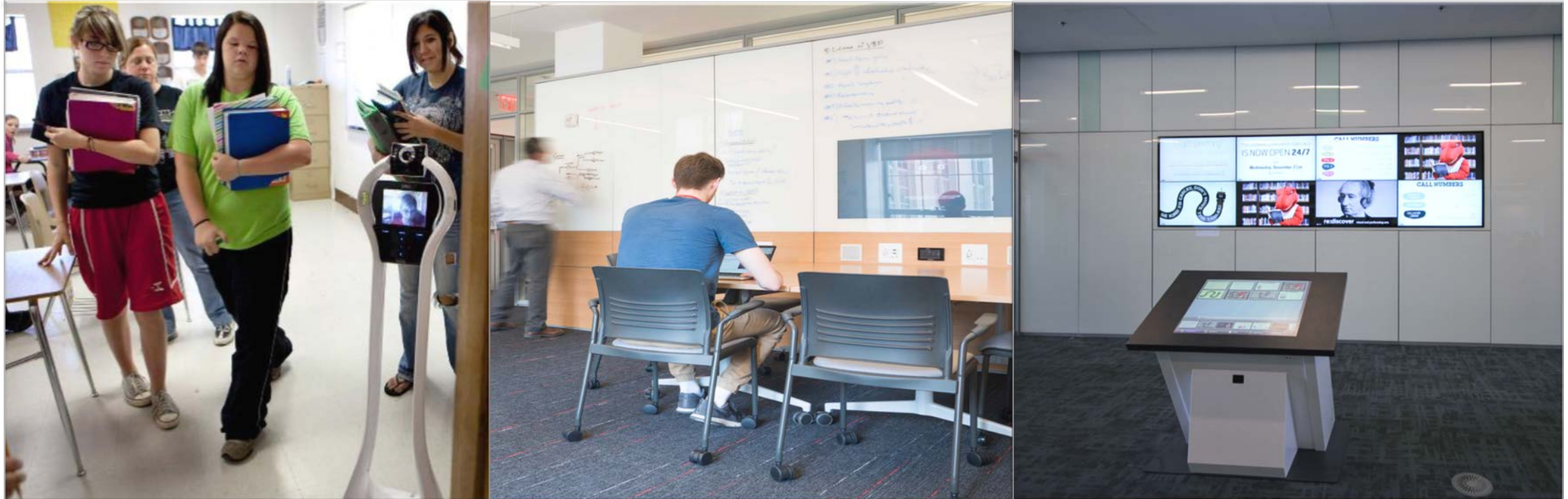


Safety & Security Tools



Balancing Transparency with Safety

Health, Safety and Wellbeing



Integrated Technology

Health, Safety and Wellbeing



Challenges to Health & Wellbeing



How Does Manufactured Interior Construction Respond to These Education Drivers?





Manufactured Interior Construction vs Prefab

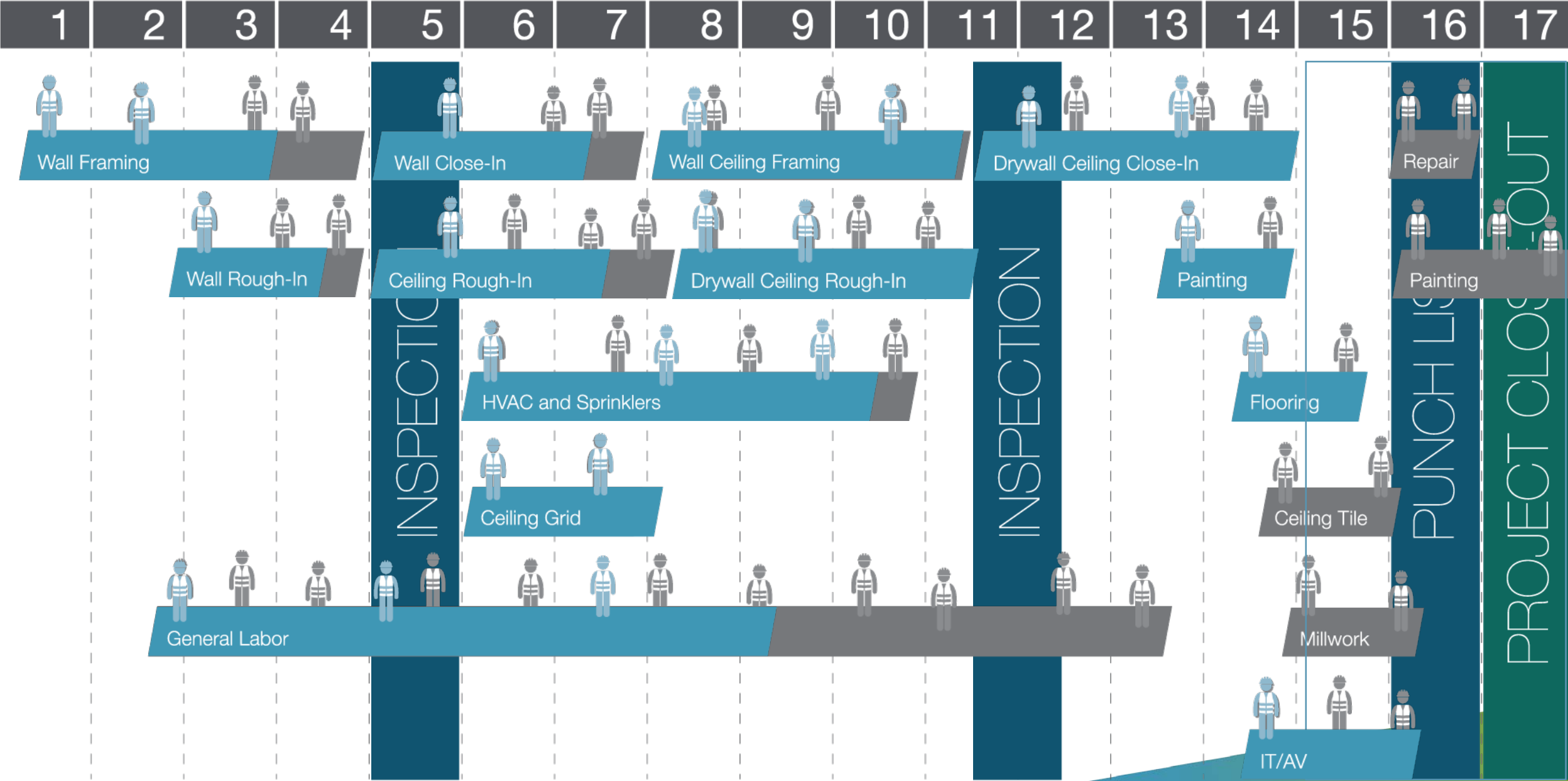


Not All Prefab Is The Same

Manufactured Interior

Construction

WEEKS

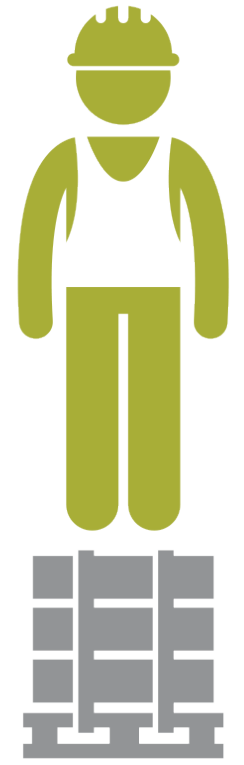




Value Proposition

70%
labor

30%
materials



30%
labor

70%
materials

Conventional vs Manufactured

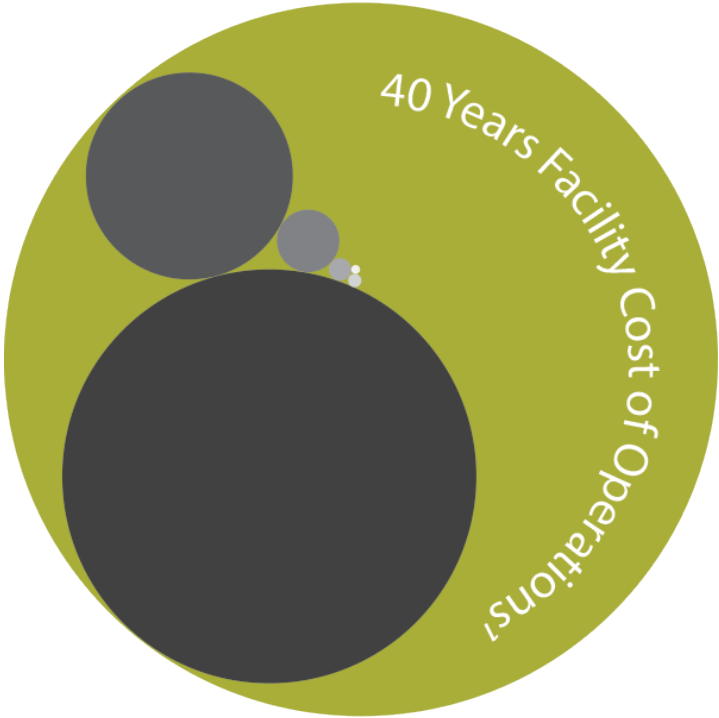


Adaptability



Conventional vs Manufactured

Value Proposition



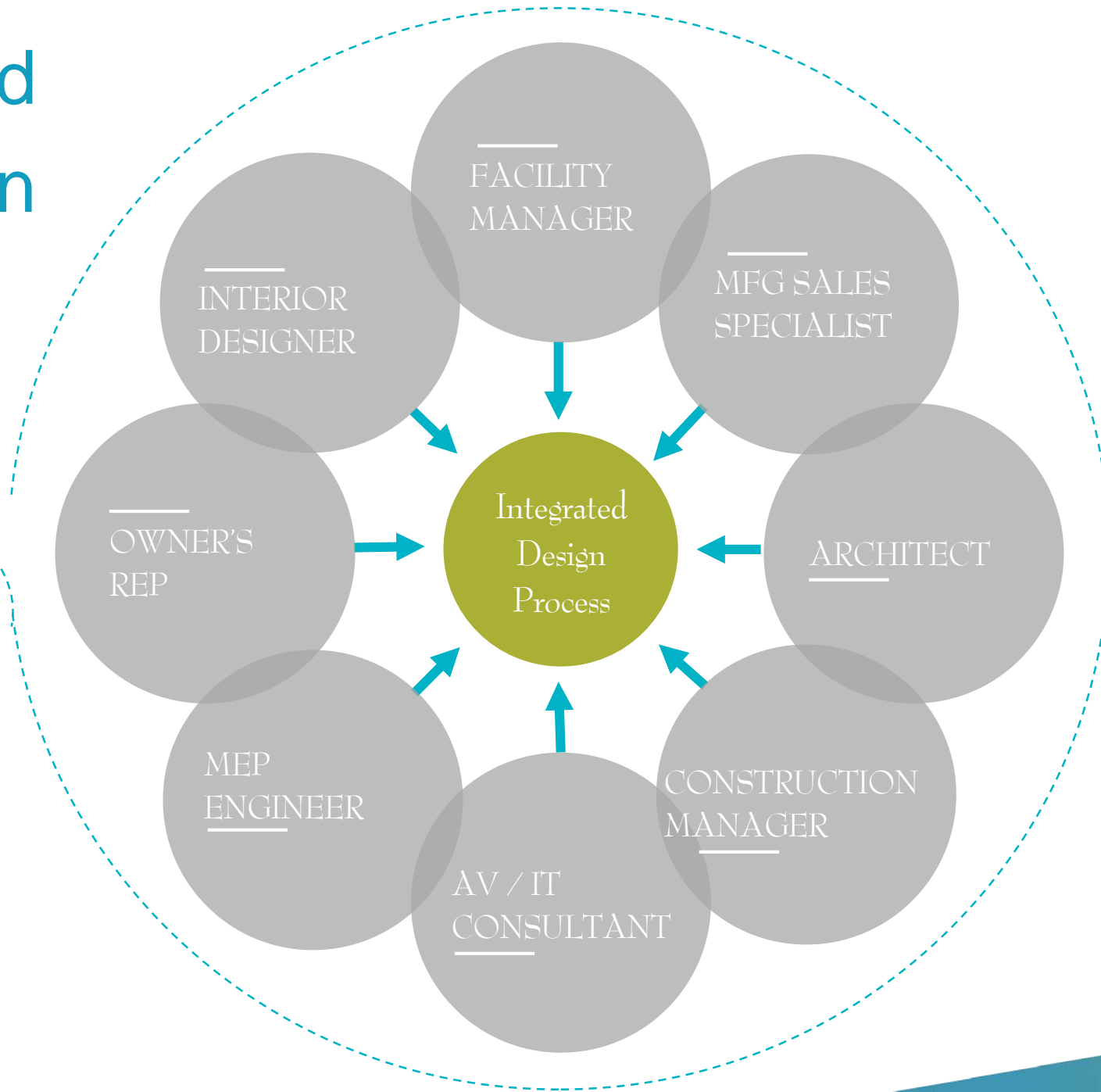
- 58% O&M
- 29% Refurbishment
- 8.7% Construction
- 3.1% Transition
- 0.9% Design
- 0.1% Planning

¹ July 2010 Healthcare BIM Consortium



Integrated Design

PLAYERS INVOLVED

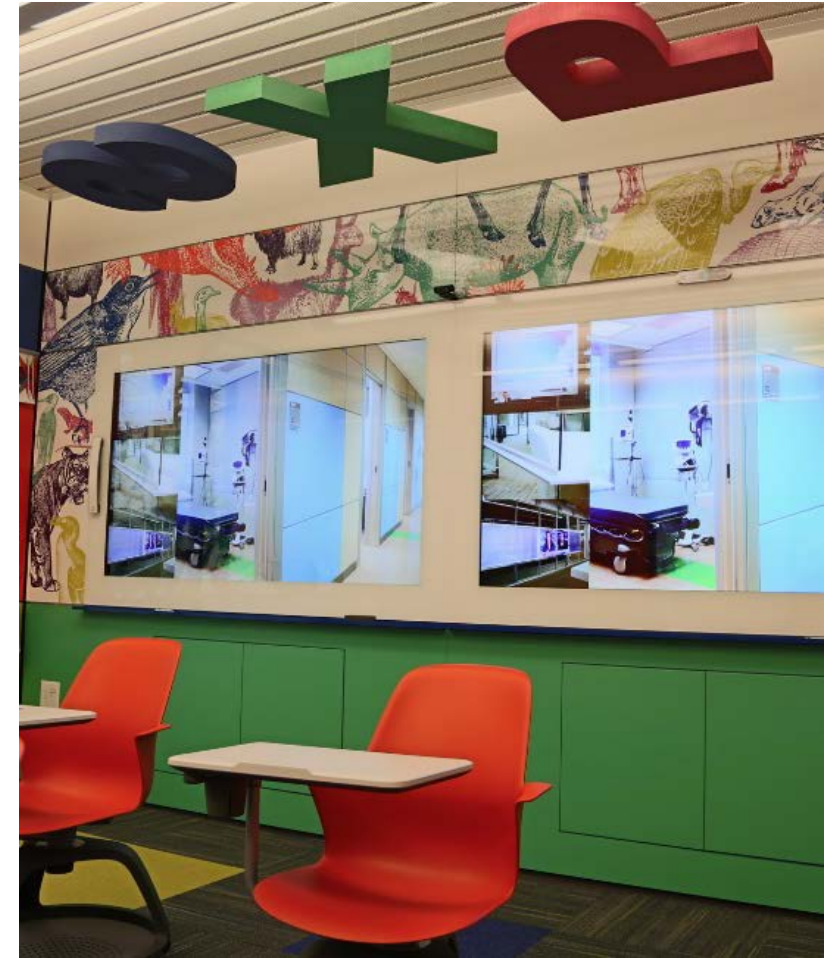


Manufactured Interior Construction's Response to...



Teaching Methods & HSW (Student-Center Design)

Manufactured Interior Construction's Response to...



Integrated Technology

Manufactured Interior Construction's Response to...

Ceiling Distribution



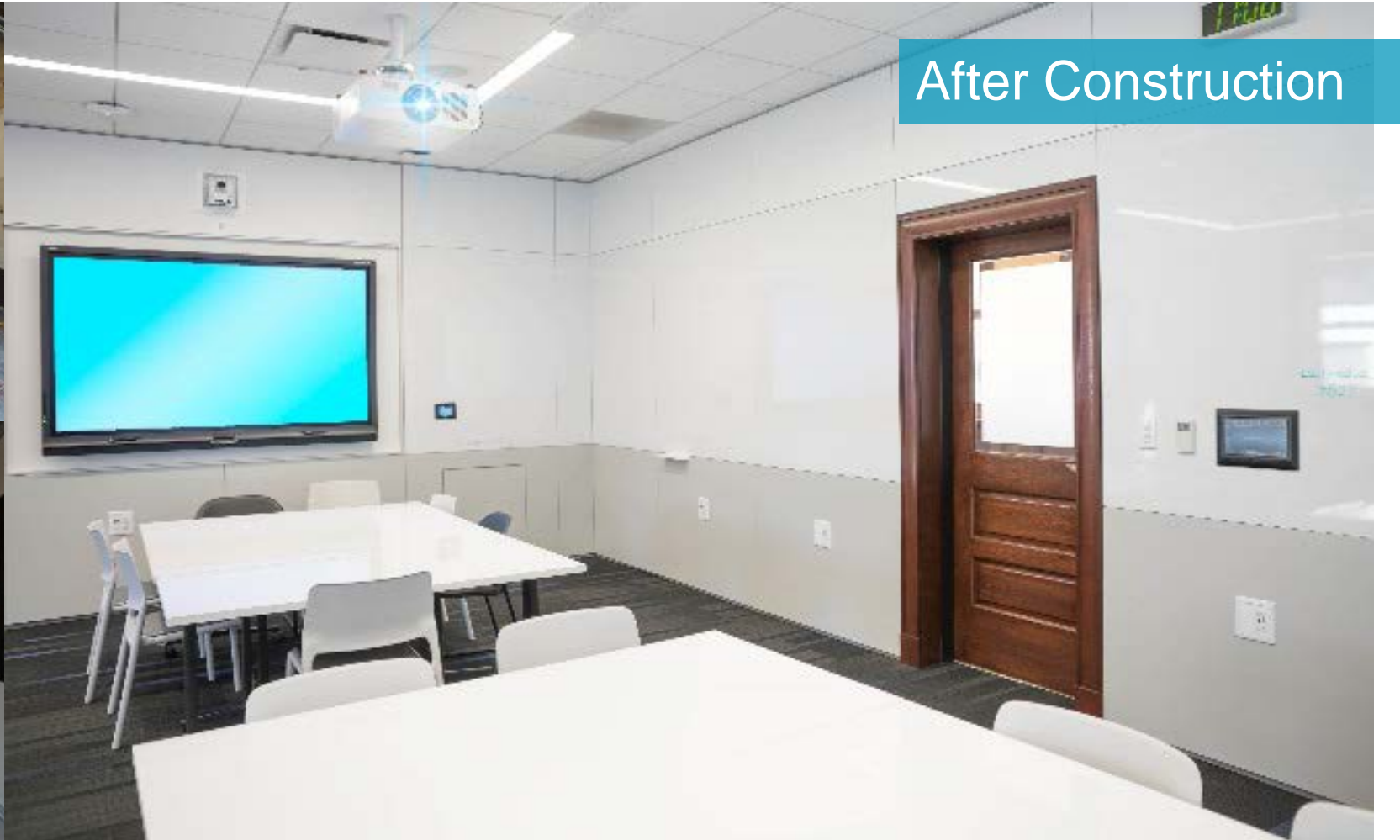
Floor Distribution

Manufactured Interior Construction's Response to...



Indoor Air Quality

Manufactured Interior Construction's Response to...



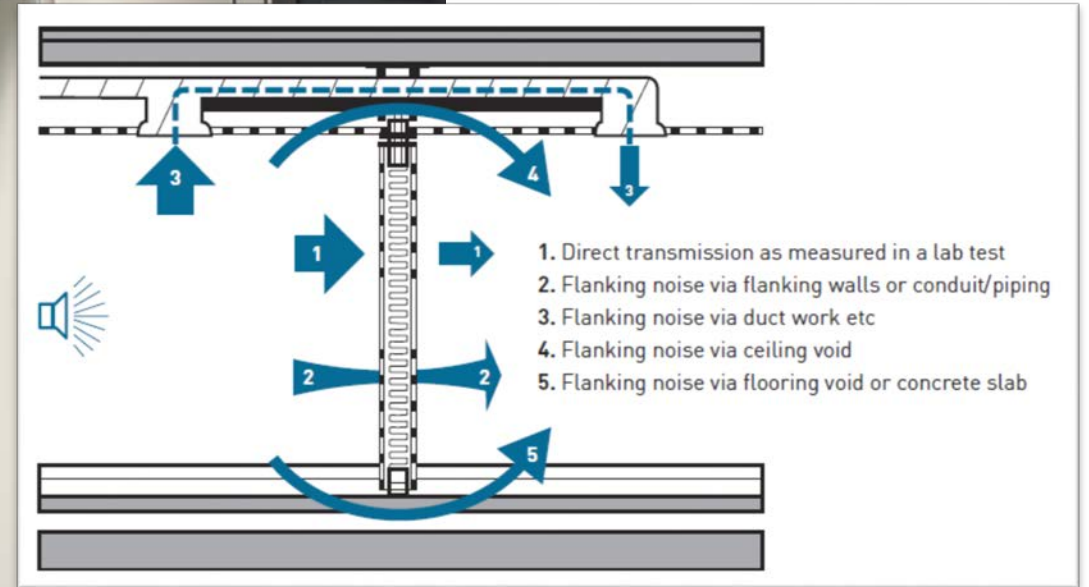
Indoor Air Quality (Asbestos)

Manufactured Interior Construction's Response to...



Indoor Air Quality (Volatile Organic Compounds)

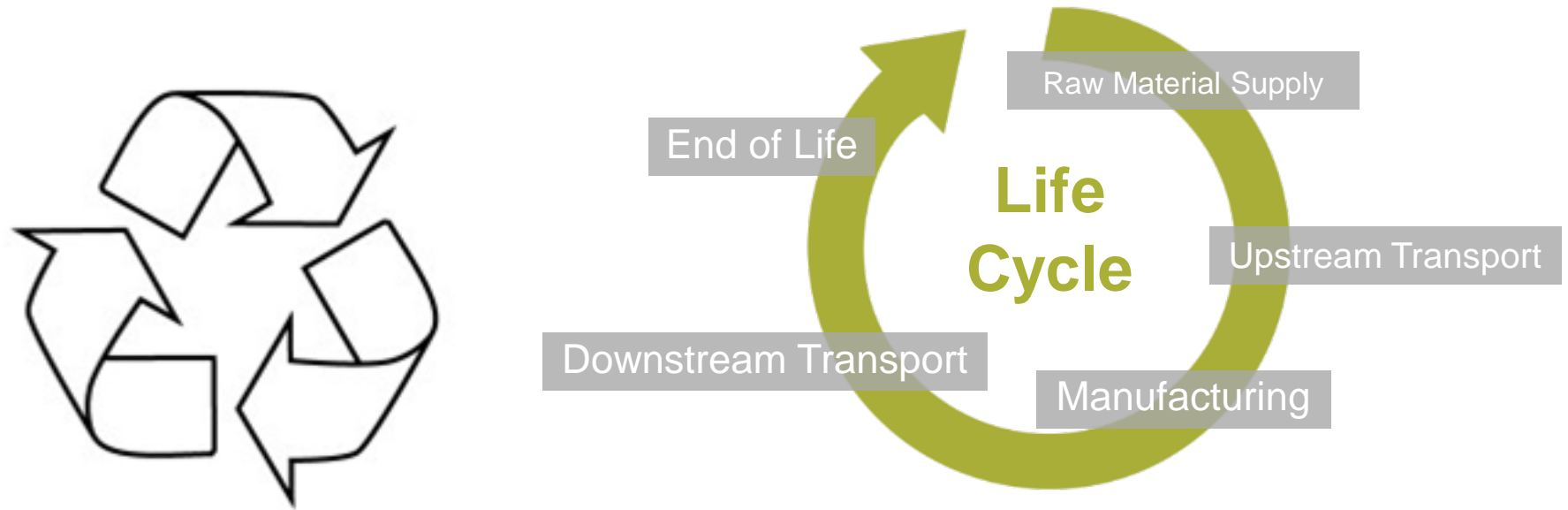
Manufactured Interior Construction's Response to...



Acoustical Performance



Manufactured Interior Construction's Response to...



Sustainability



Manufactured Interior Construction Sequence





Conclusion

Links

DIRTT Education Projects: <https://www.dirtt.com/projects/education/>

You will find the link to the second video here, along with several project profiles including videos.

The DIRTT Approach: <https://www.youtube.com/watch?v=R6Z-Xo8N0N4>

North Education Case Study: <https://www.youtube.com/watch?v=9bgGwzSJPg0>

A Quick Guide to Acoustics: <https://www.dirtt.com/news/2020-making-a-sound-decision-for-your-office/>

See additional attachments for ceiling and floor attachment technical details.



Questions?

“Education’s purpose is to replace an empty mind with an open one.”
– Malcomb Forbes