

# 21ST CENTURY LEARNING ENVIRONMENTS

ORANGE COUNTY PUBLIC SCHOOLS  
AUDUBON PARK AND ACADEMIC CENTER FOR EXCELLENCE K-8 SCHOOLS

*FEFPA Winter Conference 2019*



# PRESENTERS

- **Wayne Dunkelberger** – Principal, Creative Director of Design, Baker Barrios Architects
- **Nathan Butler, FAIA, LEED AP** – Principal, Office Director, HKS Architects, Inc.
- **Stuart Henry** – Vice President, WELBRO Building Corporation
- **Jessma Lambert** – Facilities Director, Construction Planning, Orange County Public Schools

# AGENDA

- Planning/Placemaking of the K-8 Prototype for an Urban Setting – *Wayne Dunkelberger*
- Incorporating 21st Century Learning Principles – *Nathan Butler*
- Perspectives on Constructing on Urban Sites – *Stuart Henry*
- Program Adaptation and Community Needs – *Jessma Lambert*



# PLACEMAKING OF THE K-8 PROTOTYPE THE URBAN EXPERIENCE

Wayne Dunkelberger

*Principal / Creative Designer, Baker Barrios Architects, Inc.*



# INFLUENTIAL FACTORS

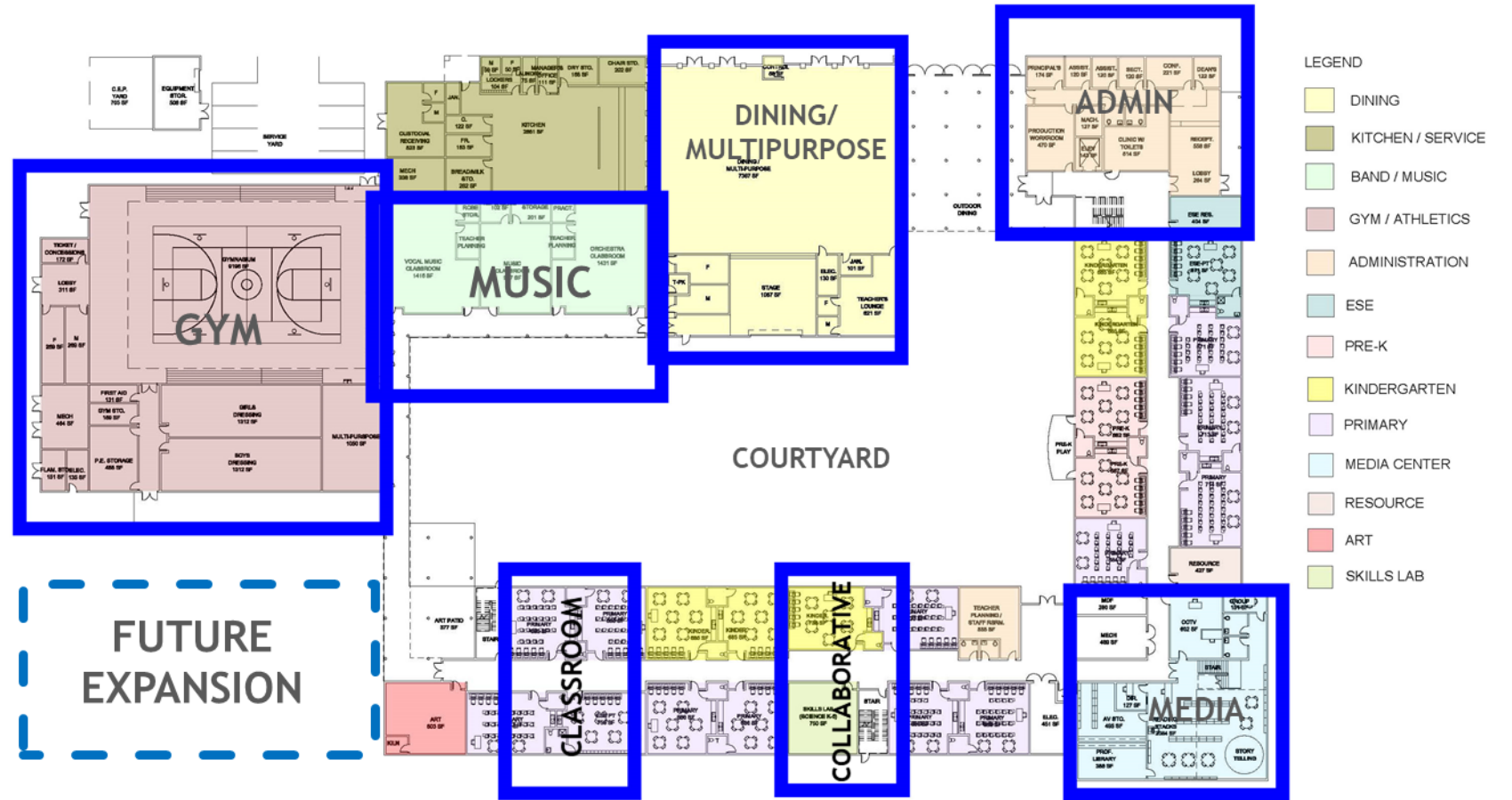
- OCPS Vision - To be the top producer of successful students in the nation.
- OCPS Mission – To lead students to success with the support and involvement of families and the community.
- Internal Stakeholders – Students, Families, Teachers, Staff, Community
- External Partners
- Community History
- Social/Economic Conditions
- Safety and Security



# KIT OF PARTS

## Influential Factors:

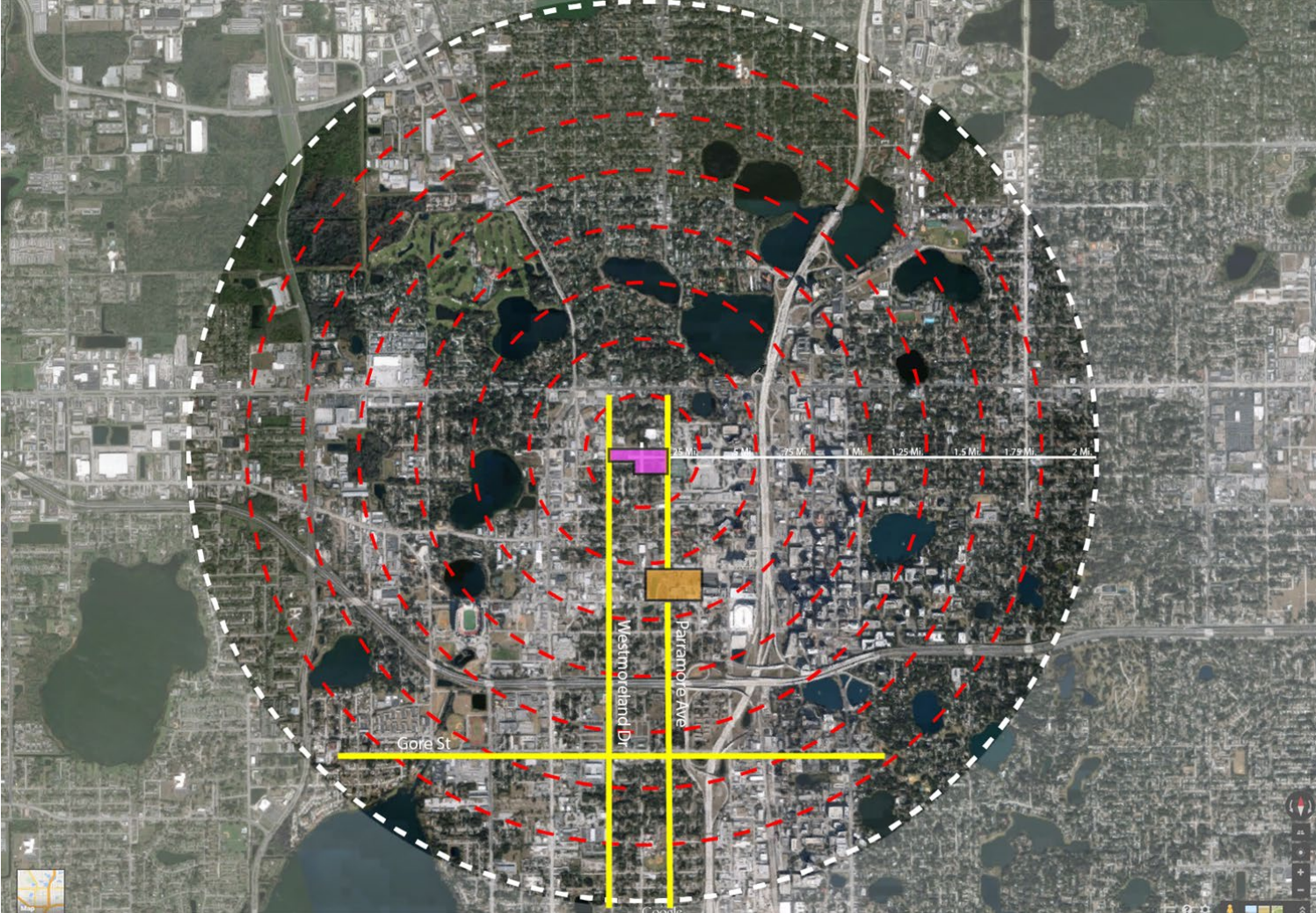
- OCPS Vision
- OCPS Mission
- Internal Stakeholders
- Safety and Security





Giving form to the Invisible and Substance to the Intangible

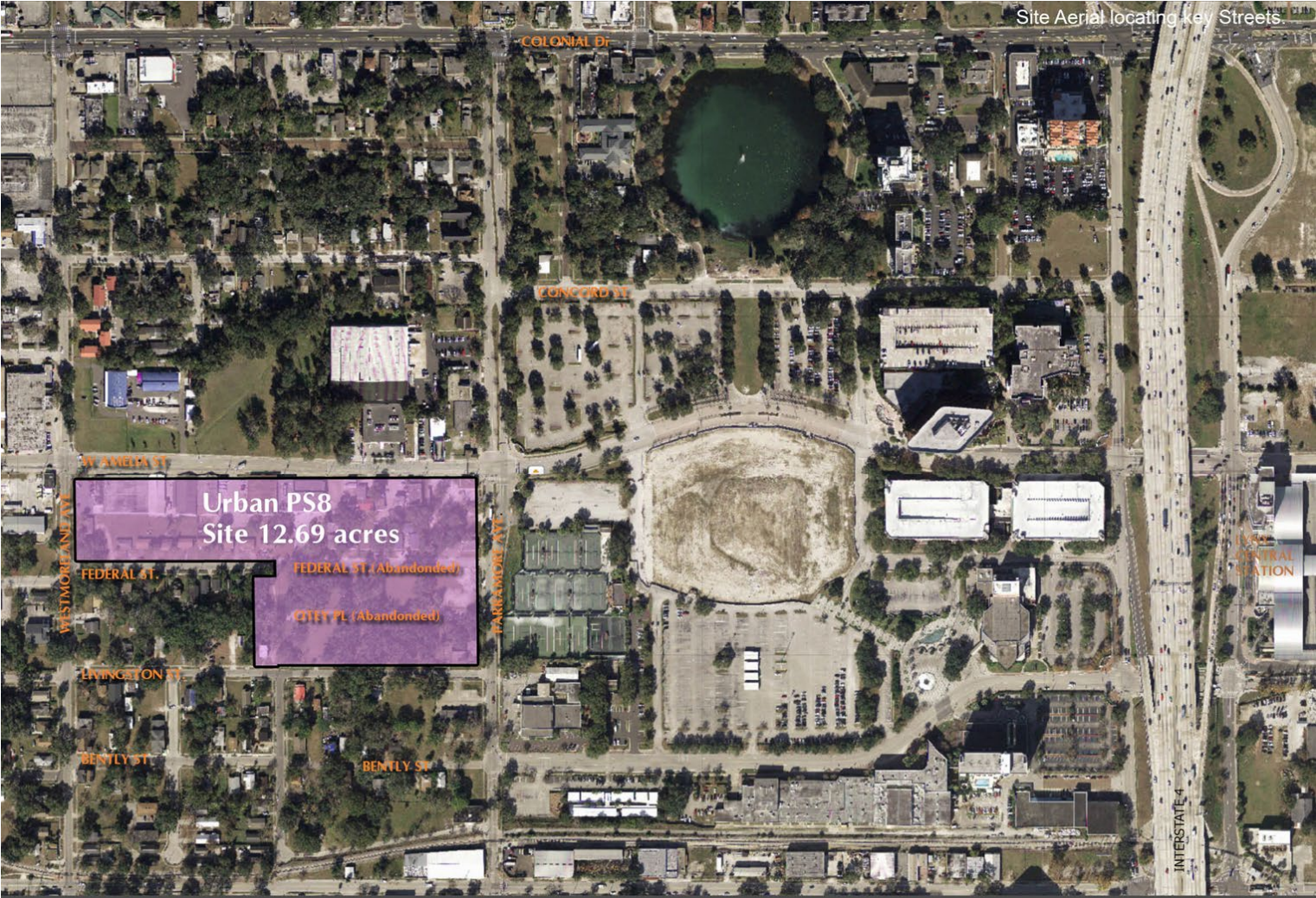
# CASE STUDY PARRAMORE





Giving form to the Invisible and Substance to the Intangible

# CASE STUDY PARRAMORE

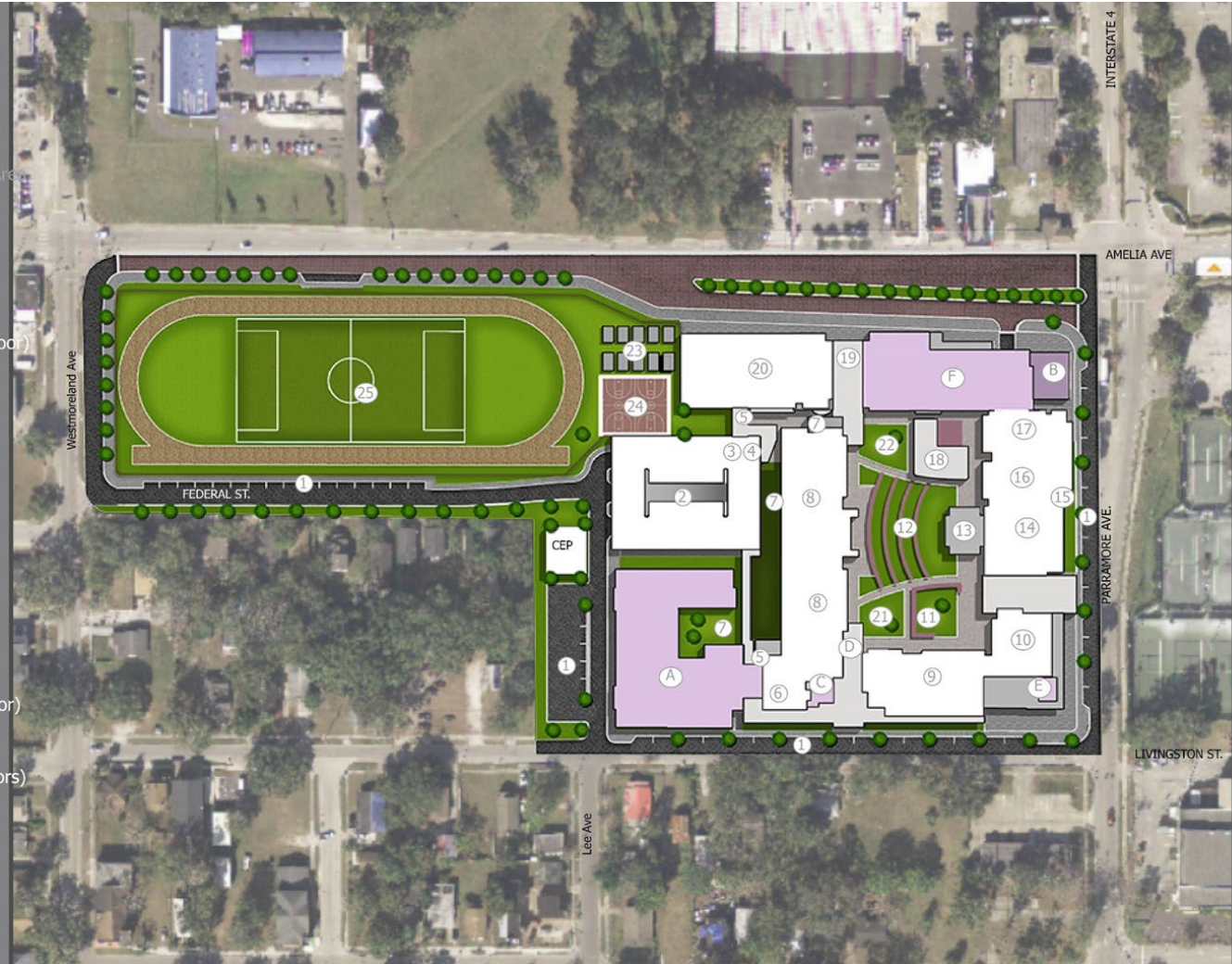




Giving form to the Invisible and Substance to the Intangible

# CASE STUDY PARRAMORE

- 1 Surface Parking
- 2 Parking Garage (3 Floors)
- 3 Parent Drop Off
- 4 Covered Loading
- 5 Controlled Security Access
- 6 Administration (2 Floors)
- 7 Student Outdoor Activity Area
- 8 Classroom (3 Floors)
- 9 Classroom (2 Floors)
- 10 Media Center (2 Floors)
- 11 Multi-Purpose Courtyard
- 12 Amphitheater
- 13 Stage (1 Floor)
- 14 Dining/Multi Purpose (1 Floor)
- 15 Outdoor Dining
- 16 Food Service (1 Floor)
- 17 Custodial and Central Receiving (1 Floor)
- 18 Music/Art (1 Floor)
- 19 Bus Loading
- 20 Gym (1 Floor)
- 21 Tot Lot
- 22 Youth Lot
- 23 Portables
- 24 Basketball Court
- 25 Track/Fields
- A Rosen Center (1 Floor)
- B Health Cottage (1 Floor)
- C HUB - UCF/Valencia (1 Floor)
- D Student Outdoor HUB
- E Community Room
- F Boys and Girls Club (2 Floors)
- G Flex Plaza - Future Stakeholder Building





Giving form to the Invisible and Substance to the Intangible

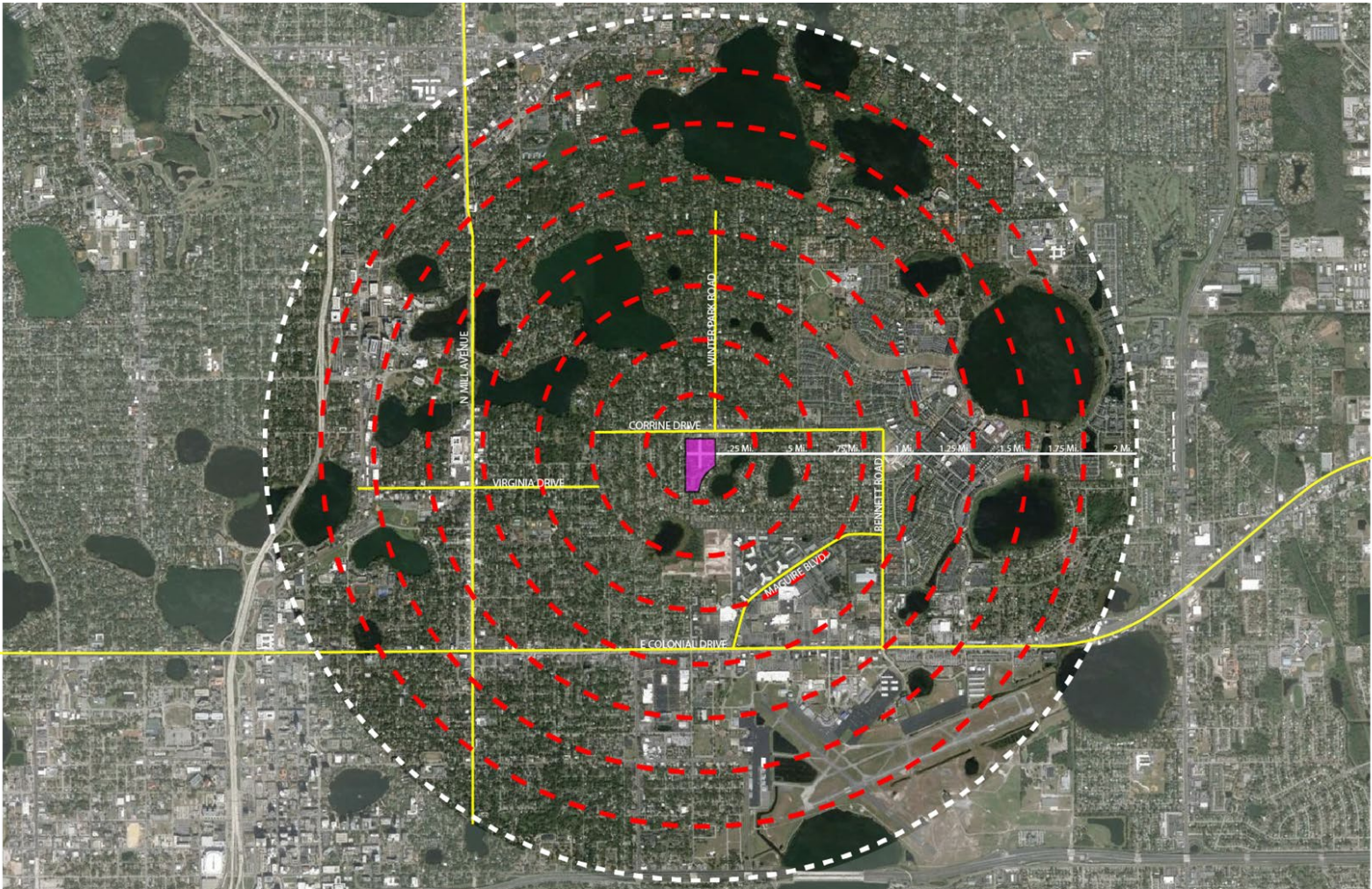
# CASE STUDY PARRAMORE





Giving form to the Invisible and Substance to the Intangible

# CASE STUDY AUDUBON PARK





Giving form to the Invisible and Substance to the Intangible

# CASE STUDY AUDUBON PARK





Giving form to the Invisible and Substance to the Intangible

# CASE STUDY AUDUBON PARK

## SITE PLAN

- ① Parent Drop Off
- ② Covered Loading
- ③ Administration
- ④ Parking Garage
- ⑤ Surface Parking
- ⑥ Classroom
- ⑦ Classroom
- ⑧ Media Center
- ⑨ Bus Loading
- ⑩ Cafeteria
- ⑪ Stage
- ⑫ Cafeteria Support
- ⑬ Service Yard
- ⑭ Gym
- ⑮ Music/Art
- ⑯ Amphitheater
- ⑰ Multi-Purpose Courtyard
- ⑱ Pre-K/K Play Area
- ⑲ 1st-3rd Grade Play Area
- ⑳ Portables
- ㉑ Track/Fields
- ㉒ Bus Pickup
- ㉓ Basketball Courts
- ㉔ Long Jump Lanes
- ㉕ Shot Put





Giving form to the Invisible and Substance to the Intangible

# CASE STUDY AUDUBON PARK







# INCORPORATING 21ST CENTURY LEARNING PRINCIPLES

Nathan Butler, FAIA, LEED AP

*Principal / Office Director, HKS Architects, Inc.*

# INFLUENTIAL FACTORS

- Rising Global Competition
- Multiple Modes of Communication
- Social Networking
- Access to Ubiquitous Information
- Changing Social Norms
- Safety and Security
  - Physical Environment
  - Virtual Environment



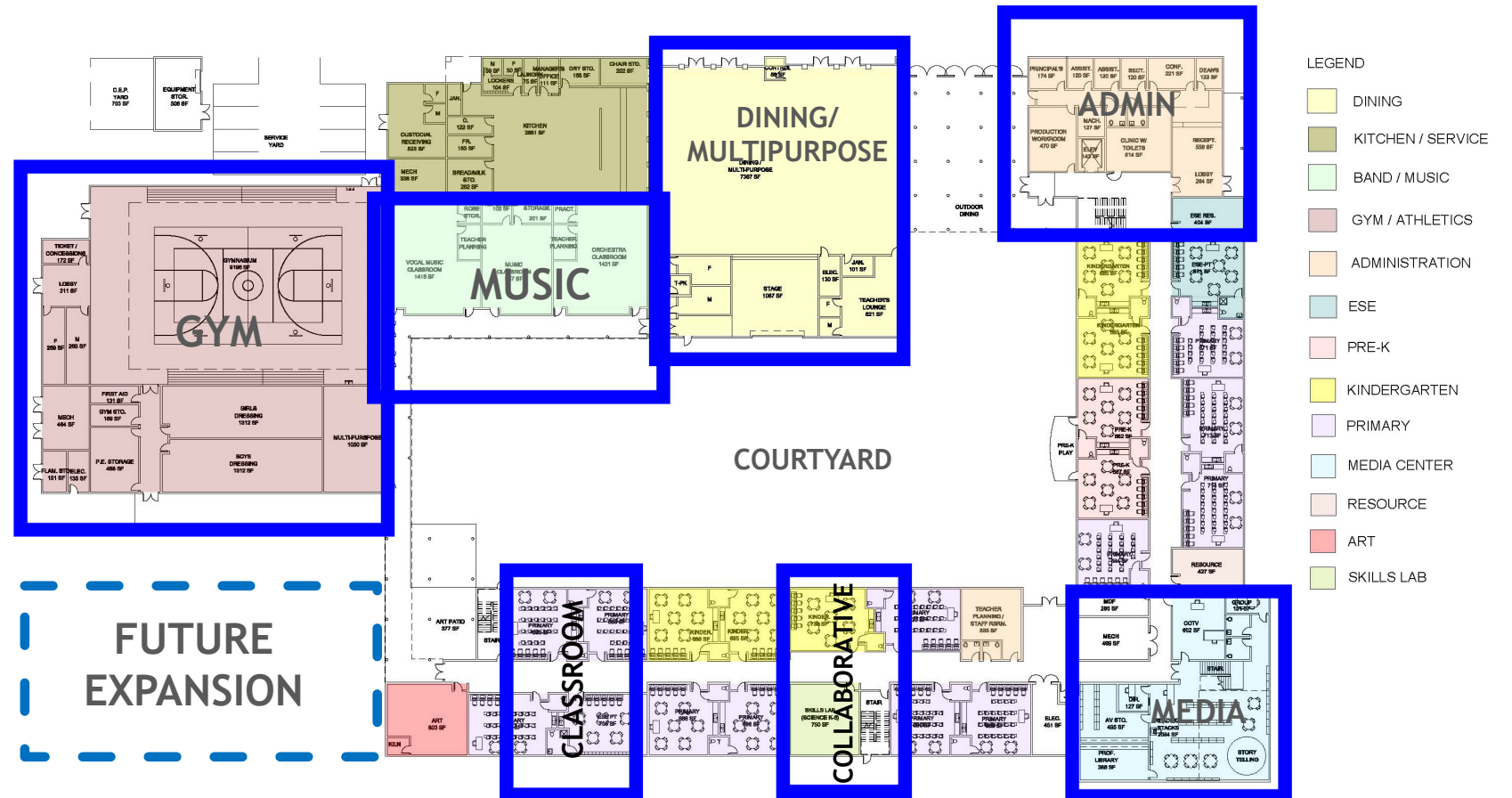
## NECESSARY SKILLS

- Communication
- Collaboration
- Media Manipulation
- Creativity
- Problem-Solving
- Self-Awareness
- Empathy
- Ethics
- Healthy Lifestyles
- Love of Learning



# PLANNING FOR FLEXIBILITY

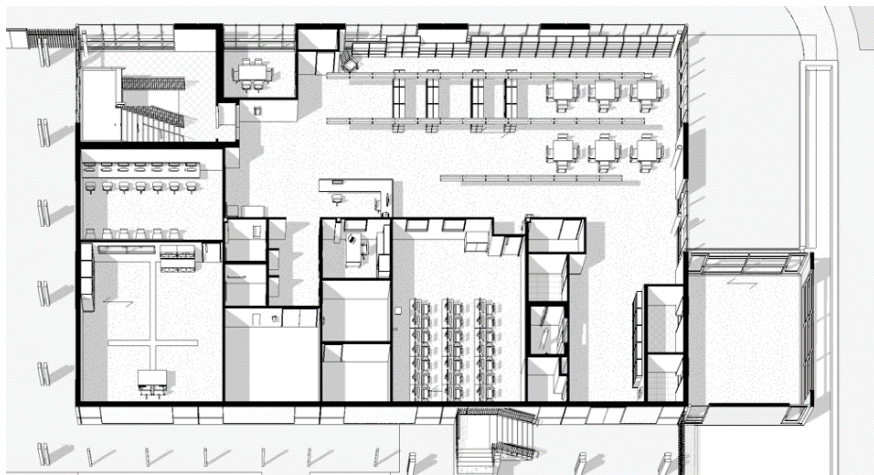
- Community Specificity
- Shared Use of Facilities
- Promoting Safety
- Accommodating Transit Options
- Utilizing Outdoor Space
- Access to Daylight
- Promoting Wellness
- Enhancing Value
- A Teaching Tool





# DESIGNING FOR ADAPTATION

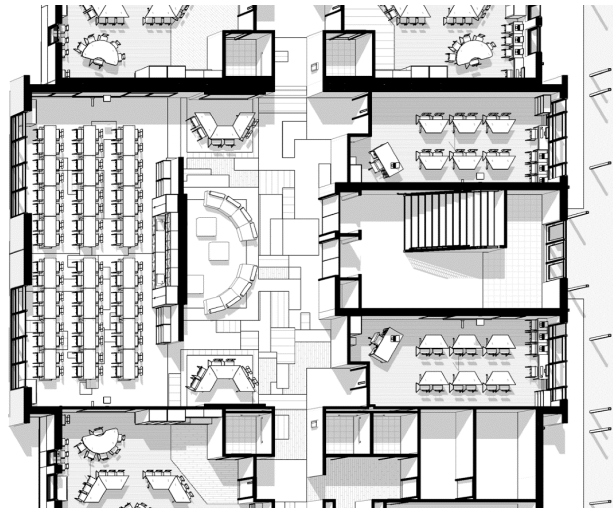
- Allowing for Reconfiguration
- Flexible Use of Spaces
- Accommodating Growth and Contraction
- Integrated Technology
- Shared Spaces





# NEW DESIGN DRIVERS

- Changing Hardware & Software
- Portable and Coordinated Content
- Wireless or Improved Power
- Integrated A/V Support
- Student Focused





# HEALTHY ENVIRONMENTS

- Mutual Concerns & Contributions
- Integrated Sustainability Lessons
- Resource Conservation
- Regional Materials
- Daylight & Views
- Nature and the Outdoors
- Preservation of Amenities
- Community Planning



# CENTER OF COMMUNITY

- Part of a Larger Social Order
- Shared Interests
- Safety
- Comfort & Inclusivity
- Valued and Relevant




### Rosen Preschool



HARRIS ROSEN FOUNDATION

- Early Education for Kindergarten Readiness
- Feel Safe & Secure
- Welcoming to the Community
- State of the Art Equipment
- Outdoor Play Area

### OCPS ACE K-8



Orange County Public Schools

- 1200 Student Stations
- Athletics
- Food Service
- Media Center
- 
- 

### OCPS Jones High



Orange County Public Schools



WHAT'S RIGHT WITH OUR SCHOOLS  
Students Awarded Broad Prize Scholarship  
Jones High School, Orange County



### After School Programs



BOYS & GIRLS CLUBS OF AMERICA


- Education & Career Programs
- Character & Leadership Programs
- Health & Life Skills
- The Arts Programs
- Sports, Fitness and Recreation

### College Education

Full Scholarship to the University of Central Florida

Full Scholarship to the University of Central Florida College of Medicine

### Community Programs



University of Central Florida

**VALENCIA COLLEGE**

- Community School
- Bridge between K8 and College
- Evening Programs
- Adult Programs
- Community Clinic



# PERSPECTIVES ON CONSTRUCTING ON URBAN SITES

Stuart Henry

*Vice President, WELBRO Building Corporation*



# URBAN SITE CONSTRUCTION



In an **urban construction** setting there are two fundamentally different entities that are placed upon one another in the same environment, and usually for an extensive period of time. They are expected to live together harmoniously for the duration of the project; they are the “Contractor” and the other the “Community”.



# LEADING CONTRACTOR ISSUES

## ■ Top 3 Leading Contractor Concerns

- Damage to Surrounding Buildings / Homes
- Noise / Dust / Light Pollution
- Off-site Parking

## ■ Strategies to Mitigate Risk

- Video records of adjacent properties and existing damage
- Dust barricades implemented at perimeter fence
- Water trucks & SWPPP procedures
- Noise screens around pumps & generators
- Air Scrubbers
- Rent vacant properties & bus workers to site



Spillane JP, Flood M, Oyedele LO, von Meding JK and Konanahalli A (2013) Urban high-density construction sites and their surrounding community: issues encountered and strategies adopted by contractors In: Smith, S.D and Ahiaga-Dagbui D.D (Eds) Procs 29<sup>th</sup> Annual ARCOM Conference

# LEADING COMMUNITY ISSUES

- Top 3 Community Concerns
  - Duration of Road Closures / Traffic
  - Presence of Physical Obstacles
  - Pedestrian Walkways Maintained
- Strategies to Address Concerns
  - Regular Community Meetings to Discuss Progress
  - Maintain a Clean Site Inside & Out
  - Ensure All Business Entrances Are Never Blocked
  - Maintain Strict Material Delivery Schedule
  - Ensure Night Lighting Points Down Not Outside of Site
  - Door to Door Flyer Communication of Any Disruptive Activities



*Spillane JP, Flood M, Oyedele LO, von Meding JK and Konanahalli A (2013) Urban high-density construction sites and their surrounding community: issues encountered and strategies adopted by contractors In: Smith, S.D and Ahiaga-Dagbui D.D (Eds) Procs 29<sup>th</sup> Annual ARCOM Conference*



# KEYS TO SUCCESS

- Clear Communication with Community Neighbors & All Stakeholders
- Knowledge of Local Area Restrictions & Jobsite Safety
- Minimal Disruption to Adjacent Surroundings





# **PROGRAM ADAPTATION AND COMMUNITY NEEDS**

Jessma Lambert

*Facilities Director, Construction Planning, Orange County Public Schools*



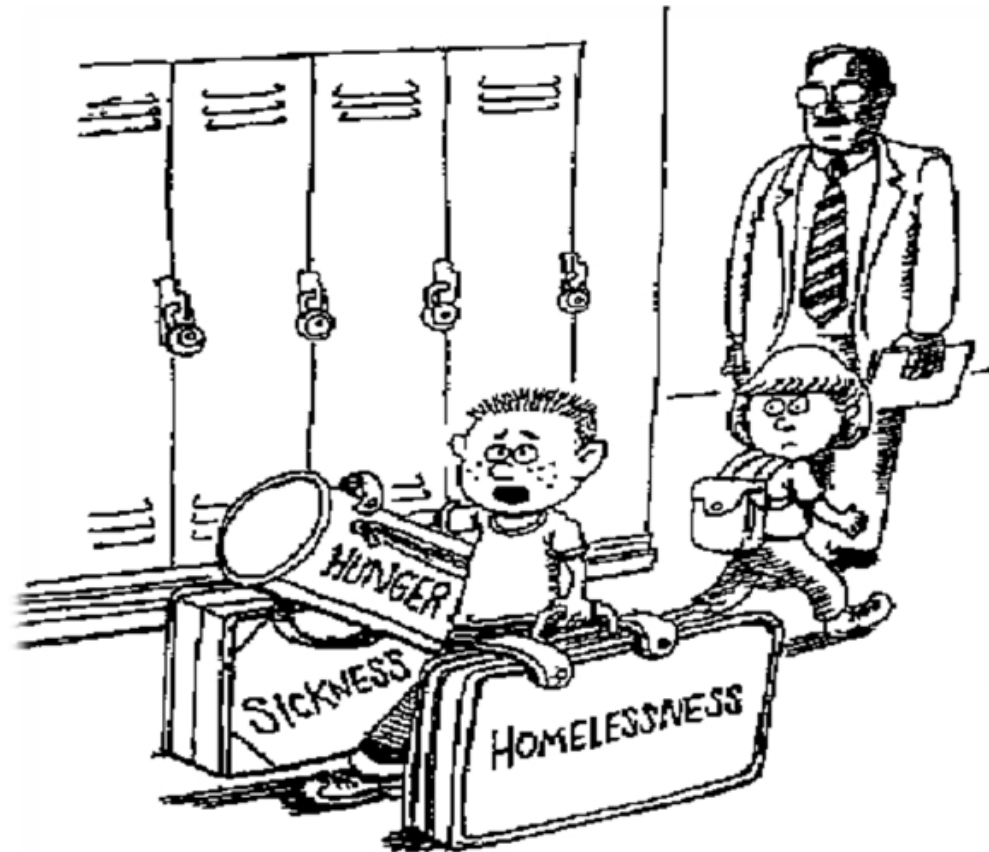
# WHAT IS A COMMUNITY SCHOOL?

A Community School is both a physical place as well as a set of partnerships between a school and other community resources.

- Coalition for Community Schools

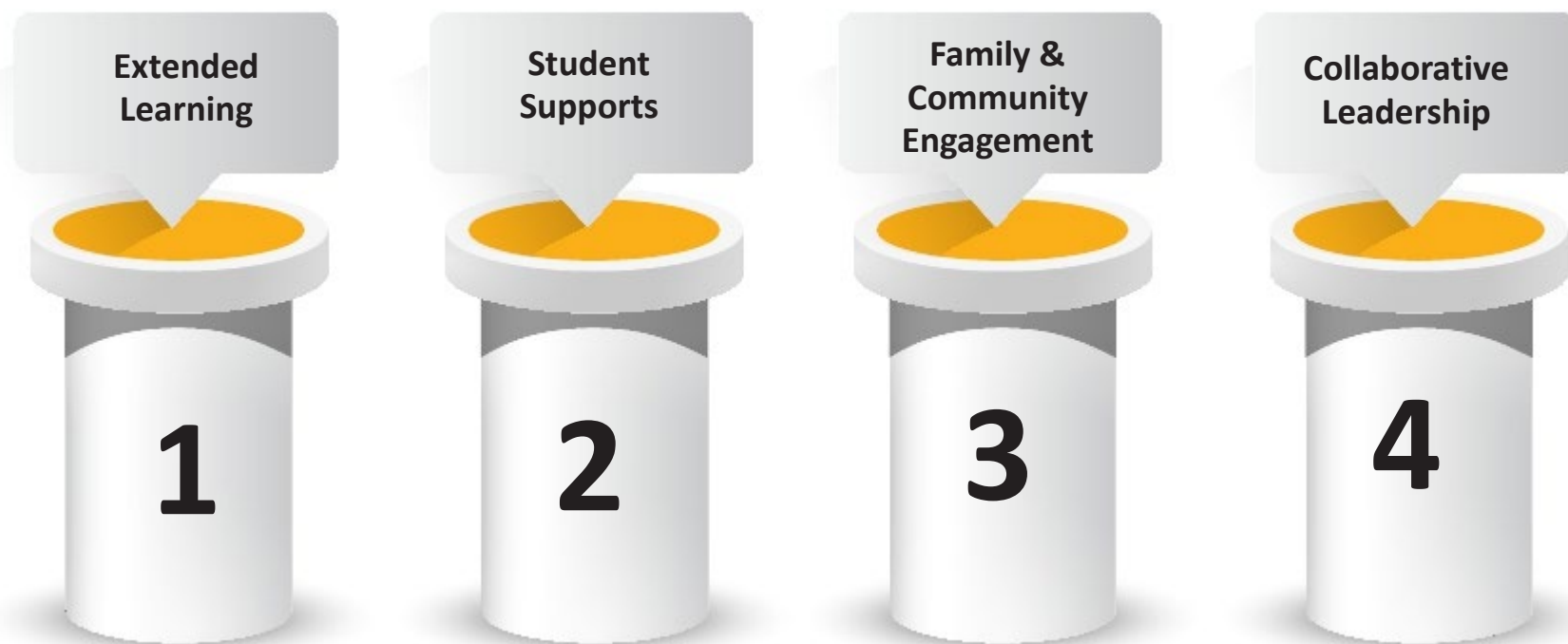


# WHY COMMUNITY SCHOOLS?





# THE FOUR PILLARS OF COMMUNITY SCHOOLS



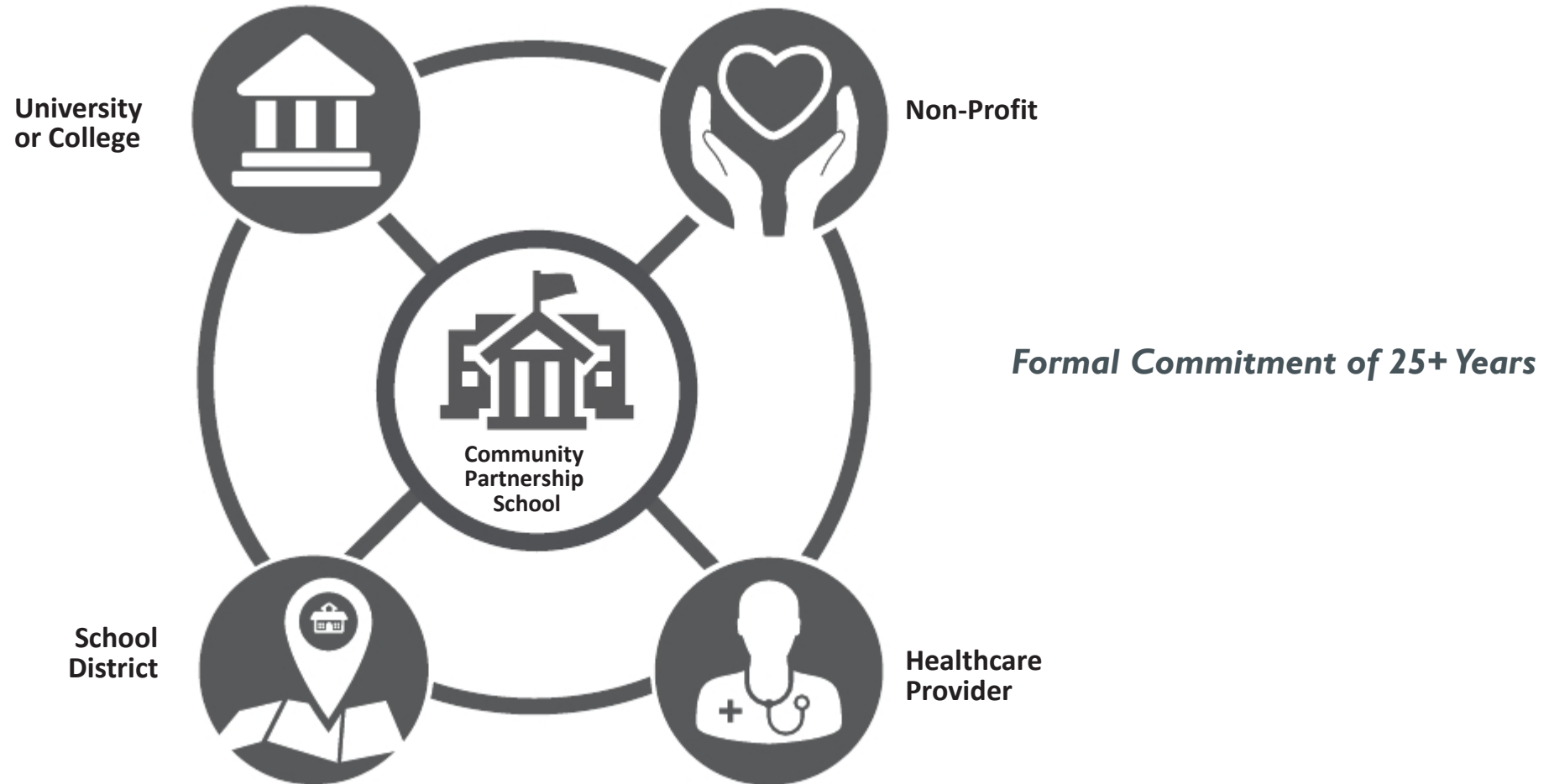
Oakes, J., Maier, A., & Daniel, J. (2017)  
Community Schools: An Evidence-Based Strategy  
for Equitable School Improvement.  
Palo Alto, CA: Learning Policy Institute



HOW WE DO **GOOD**

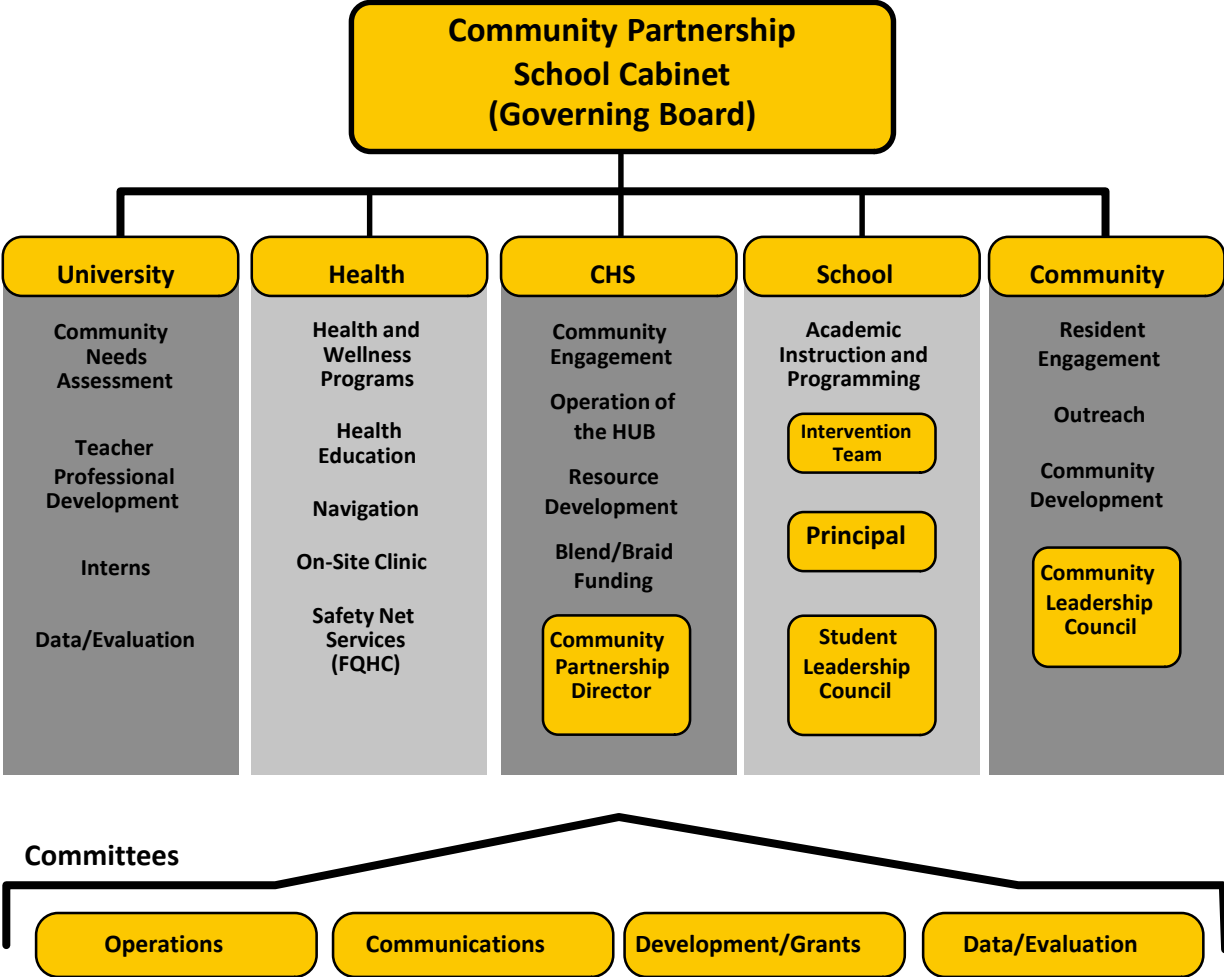
Program Adaptation and Community Needs

# WHAT MAKES COMMUNITY PARTNERSHIP SCHOOLS UNIQUE?





# OUR MODEL: SHARED PARTNERSHIP, SHARED GOVERNANCE



# DEVELOPMENT



## Social Return on Investment (SROI)

**1:9.9**

For every \$1 invested, a community school net present value of the benefits is \$9.90\*

[http://www.childrensaidsociety.org/files/CASE\\_20STUDY\\_20final.pdf](http://www.childrensaidsociety.org/files/CASE_20STUDY_20final.pdf)





## WHERE WE ARE TODAY



**Orlando - Evans High School (Y6)**

---

**Brevard - Endeavour Elementary (Y3)**



**Pensacola - C.A. Weis Elementary (Y3)**

**Tampa - Mort Elementary (Y2)**

**Jacksonville - Ed White High School (Y2)**

**Gainesville - Howard Bishop Middle School (Y2)**



---

**Sebastian - Pelican Island Elementary (Y2 / School Lead)**

**St. Augustine - Webster Elementary (Y1)**

**St. Augustine - Southwoods Elementary (Y1)**

**Orlando - Academic Center of Excellence (ACE) (Y1)**

**Tallahassee - In development**

**Clay - Wilkinson Junior High School (Fall 2018)**

