



# Florida Department of Education Update

## FLORIDA EDUCATIONAL FACILITIES PLANNERS ASSOCIATION

### 2018 Frequently Asked Questions



FLORIDA DEPARTMENT OF  
**EDUCATION**  
fldoe.org

[www.FLDOE.org](http://www.FLDOE.org)

## FAQ OVERVIEW

- Facilities programs and contacts
- Fixed capital outlay funding
- Upcoming Survey / Validation Schedule
- EFIS
- Castaldi's
- Miscellaneous Topics



FLORIDA DEPARTMENT OF  
**EDUCATION**  
fldoe.org

# Facilities Programs & Contacts

# Office of Educational Facilities

- Mark Weigly, Director
- Sonja Suber, Office Manager
- Violet Brown, Sr. Educational Program Director
  - Educational plant survey (public schools and Florida colleges)
  - District facilities work plan
  - Special Facility Construction Account
  - Educational Facilities Information System
- Kylene Casey, Growth Management & Legislative Liaison
- Don Whitehead, AIA, LEED AP, Safe and Efficient Facilities Design Manager
  - Code development/interpretation
  - Construction document review (including raze requests)

## Office of Educational Facilities



Mark Weigly  
Director, LEED  
AP, FCP



Violet Brown  
Senior Educational  
Program Director



Sonja Suber  
Office Manager

# Construction Planning & Training Team



**Don Whitehead**  
AIA, LEED AP



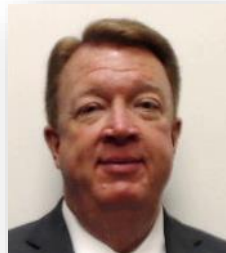
**James Mitchell**  
Mechanical P.E.



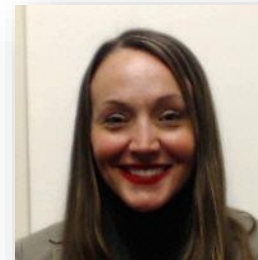
**Angel Rodriguez**  
Electrical P.E.



**Annabelle Wright**  
Safety & Maintenance  
Training



**Randy Walker**  
Research & Training  
Specialist



**Kylene Casey**  
Growth Management &  
Legislative Liaison

# Planning & Evaluation Team



**Dale Adams**

FISH Validation, District  
Survey preparation, Special  
Facilities Construction  
Account



**Laura Albritton**

EFIS Technical  
Support, Reports,  
Data Analysis, SREF



**Jimmie Childers**

FISH Validation, District  
Survey Preparation, PPL,  
EFIS Technical Support SREF



**Cindy Goss**

FISH Validation, District  
Survey Preparation, Survey  
Review, Special Facilities  
Construction Account



**Brian Gouin**

EFIS Technical Support,  
Data Analysis, Work  
Plan, Reports, Project  
Tracking



**Mark W. Jeter**

FISH Validation, Survey  
Preparation, Survey  
Review, SREF



FLORIDA DEPARTMENT OF  
**EDUCATION**  
fldoe.org

# Fixed Capital Outlay

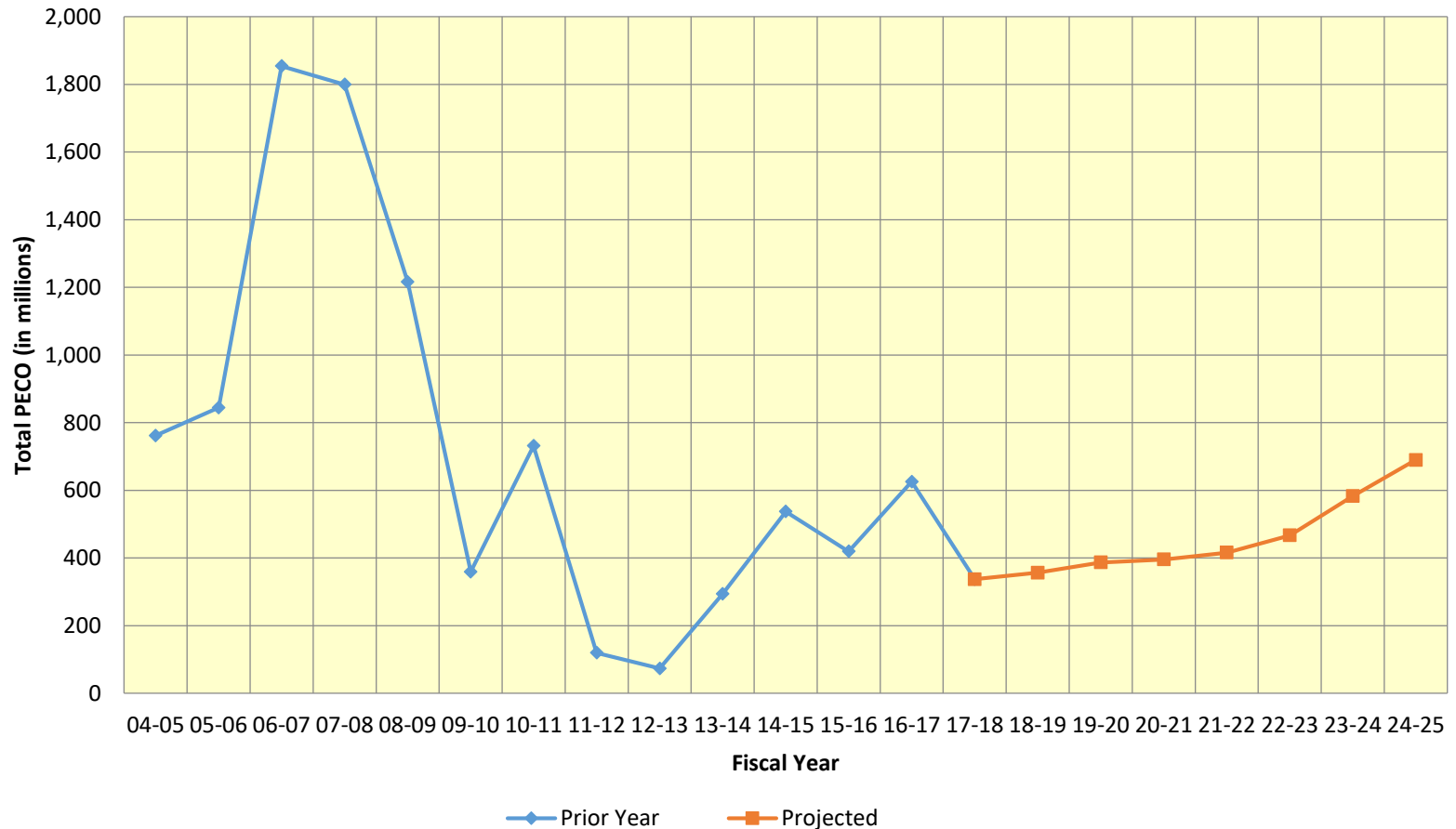


## Fixed Capital Outlay Office

- Gina Jones, Director
  - Administer the FCO funds established by the Florida constitution and statutes
  - Make monthly cash disbursements
  - Prepare the Commissioner's Annual K-20 FCO Legislative Budget Request
  - Collect cost of construction reports, compute average costs and forward reports to the Auditor General

# PECO Appropriations -- Actual & Projected

## 2005 - 2025



# PECO Appropriations Projections

## No Bonding

*Per January 29, 2018 PECO Revenue Estimating Conference  
(in millions)*

<u>Projects</u>	<u>2018-2019</u>	<u>2018-2019</u>	<u>2019-2020</u>
Non-Bonded	\$372.3	\$396.0	\$403.9
Bonded	<u>\$ 0.0</u>	<u>\$ 0.0</u>	<u>\$ 0.0</u>
Total	\$372.3	\$396.0	\$403.9

## 2018 - 2019 Appropriations\*

(in millions)

	PECO & GR	CO&DS**	Total
K-12	\$232.9	\$ 98.0	\$330.9
Colleges	\$ 66.4	\$ 0.0	\$ 66.4
SUS	\$148.5	\$ 0.0	\$148.5
FSDB	\$ 3.4	\$ 0.0	\$ 3.4
DBS	\$ 0.0	\$ 0.0	\$ 0.0
PBS	\$ 2.4	\$ 0.0	\$ 2.4
Other	<u>\$ 10.3</u>	<u>\$ 0.0</u>	<u>\$ 10.3</u>
Total	\$463.9	\$ 98.0	\$561.9

\* Excludes appropriations for debt service

\*\* CO&DS distributions will be made to the public school districts and Florida colleges based upon instructional units

## Fixed Capital Outlay Special Facility Construction Account (in millions)

DISTRICT	APPROPRIATION
Taylor (3 <sup>rd</sup> of 3 years)	\$6.3
Liberty (2 <sup>nd</sup> of 3 years)	\$ 6.1
Jackson (2 <sup>nd</sup> of 3 years)	\$19.1
<b>Total</b>	<b>\$ 31.5</b>



FLORIDA DEPARTMENT OF  
**EDUCATION**  
fldoe.org

# Survey / Validation Schedule

## Office of Educational Facilities

- K-12 Surveys Expiring June 30, 2019
  - **Bradford\***
  - Citrus
  - **Franklin\***
  - **Hamilton\***
  - **Highlands\***
  - Hillsborough
  - **Liberty\***
  - Monroe
  - **Nassau**
  - Polk
  - Putnam

**\*Consortium district = validation and educational plant survey**

Non-consortium district = 5 percent validation

## Office of Educational Facilities

- College Surveys Expiring June 30, 2019
  - Broward College
  - Lake – Sumter Community College
  - Pasco - Hernando College





FLORIDA DEPARTMENT OF  
**EDUCATION**  
fldoe.org

# EFIS

## EFIS Update

- When will EFIS System be updated?
- Can Long Range plans be updated with work plan?
- Is the state transitioning to a net square foot costs vs. student station cost?
- When will the work plan be opened?

## EFIS FAQs


- Help! I accidentally deleted a FISH facility (or parcel, building, room). How do I get it back?
- Help! I accidentally deleted a spot survey I was working on. How do I get it back?
- Why does the FISH “automated reevaluation” put zero student stations in some resource rooms and more than zero in other resource rooms?

## EFIS FAQs

- Can we make changes to FISH during an FTE count week in February or October?
- What is an MSID number and how can we apply for a new MSID number for a facility?
- Help! I cannot reach the EFIS server. Error message states “Can’t read page”. I last logged on before 7/2017.


## EFIS Contacts

- Brian Gouin

 850-245-9296

 [Brian.Gouin@fldoe.org](mailto:Brian.Gouin@fldoe.org)

- Laura Albritton

 850-245-9284

 [Laura.Albritton@fldoe.org](mailto:Laura.Albritton@fldoe.org)



FLORIDA DEPARTMENT OF  
**EDUCATION**  
fldoe.org

# Project Priority List

## Project Priority List (PPL) FAQs

- What is a Project Priority List and why should our district submit one?
- When should the PPL be submitted?
- Are there any other tips for completing and submitting the PPL in EFIS?
- Who do I contact for questions with my PPL?

Jimmie Childers

 850.245-9301

 [Jimmie.Childers@fldoe.org](mailto:Jimmie.Childers@fldoe.org)



FLORIDA DEPARTMENT OF  
**EDUCATION**  
fldoe.org

# Castaldi's



## Castaldi FAQs

- What are the most common deficiencies identified as mandatory corrections in Castaldi reviews?
- What is the Castaldi review process?
- Are there changes to the Castaldi form?
- What cost should I use for
  - New Construction
  - Renovation
  - Remodel
- Who do I contact for questions on my Castaldi?
  - Don Whitehead
    - 📞 850-245-9295
    - ✉ [Don.Whitehead@fldoe.org](mailto:Don.Whitehead@fldoe.org)



[www.FLDOE.org](http://www.FLDOE.org)

